



21st Annual New York State GIS Conference



[Home](#)

[2005 Highlights](#)

[2005 Program](#)

[2005 Workshops](#)

[2005 Posters](#)

[2005 Doctor's
Office](#)

[2005 Exhibits](#)

[2005
Underwriters](#)

[History](#)

[2005 Partnership
Award](#)

['04 Conference](#)

[Steering
Committee](#)

[2005 Conference
Schedule](#)

[2005 Presenters
List](#)

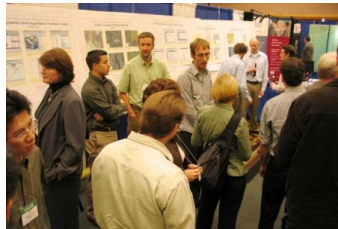
**Join us on Oct. 23-24, 2006 New York State GIS Conference at the
Crowne Plaza Resort and Golf Club, Lake Placid**



**2005 New York State GIS Conference
Rochester Hyatt • 333 people attended on October
17-18, 2005**

***A Colorful Keynote was delivered by
Cynthia Brewer***

[Check out ColorBrewer](#)



This Year's Posters in Rochester!

15 Posters were displayed for the poster contest. . .First Prize went to Brad Stratton, Tim Tear, Charles Ferree, Dany Kwan. . .Second Prize to Jonas Landes, Carol Cady, William Olsen and Jorgji Dhima, . . .Third Prize went to Ana Hiraldo and the People's Choice to ESF's Erik Nordman.
Congratulations to all of the Winners.



Exhibitors: In their Booths at the Hyatt!

40 Vendors made the exhibit area an exciting part of the conference this year AGAIN!

Special thanks to ESRI and IAGT for their sponsorship at the 2005 conference.

Sponsored by the State University of New York, [College of Environmental Science & Forestry](#)

[Privacy Policy](#)

[ESF Outreach](#)

[Contact our Office](#)



21st Annual New York State GIS Conference

[Home](#)[Call for Posters](#)[Highlights](#)[Registration](#)[Program](#)[Workshops](#)[Posters](#)[Doctor's Office](#)[Exhibits](#)[Underwriters](#)[History](#)[Partnership](#)[Award](#)['04 Conference](#)[Steering](#)[Committee](#)

Exhibits

2005 Vendor Area - Lots of networking and ideas were shared



We invite you to be an exhibitor at the NYS GIS conference this year in Rochester. There will be a continental breakfast set up in the exhibit area and breaks will be served in the exhibit area in the ballroom this year with sessions located on the same floor. The conference will provide an ideal opportunity for conference participants to visit your exhibit!

BOTH OF THE FOLLOWING FORMS ARE REQUIRED FOR EXHIBITOR REGISTRATION!

1. View current booth assignments [here](#)
2. Download the ESF Vendor Registration Form [here](#)
3. Download the Hyatt Request for Electric, Phone or Internet connection [here](#).

Exhibit Setup and Schedule:

Set up begins on Sunday, Oct. 16 from 6:00 - 9:00 PM

Set up continues on Monday, Oct. 17 from 7:00 - 10:00 AM.

Exhibit area opens Monday, Oct. 17 at 10:00 AM. - 6:30 PM


and Tuesday, Oct 18 at 8:00 AM - 2:00 PM.

Exhibitor Tear down is 2:00 PM - 4 PM Tuesday, Oct. 18.

Click [here](#) for a diagram of the exhibit area layout.

Shipping: Special arrangements must be made for receiving any equipment, goods, displays or other materials that will be sent, delivered or brought into the Hotel. The Hotels receiving department is open 8:00 a.m.-2:00 p.m., Monday - Friday.

All packages must contain a label giving the following information: 1) Return address, 2) Name of



Group affiliation, 3) Meeting room, name and date, 4) Group contact (Sales/Catering), 5) Name of person that will claim package, 6) Date of the person's arrival. Be sure to mark every box shipped: "NYS GIS Conference, October 17-18, 2005."

Exhibit Decorating Company: Clifton Park Convention Services will be our decorator (Betty Voss; phone (518) 877-7449). Clifton Park will provide booth piping and drapes, a table, two chairs, a company sign, and a wastebasket. Contact Clifton Park directly for other equipment needs, such as additional tables or drayage.

Security: General facility security will be in place Monday night from the close of the reception at about 6:30 PM until exhibits open again at 8:00 AM on Tuesday.

Meals: Continental Breakfast, breaks and Lunch is included in the conference for both days. We would be happy to have you attend the banquet dinner on Monday night; there is an additional fee of \$30.00.

Registration: Please return the vendor registration [form](#) by mail or by fax (number listed below). If your booth requires, electricity, phone service, or internet access, you MUST fill out the Hyatt [form](#) also. (Even if you don't need any of the above services it would be a good idea to fill out the Hyatt form!) Plan to join us again this year for a chance to talk to GIS participants, experts, and leaders in the field.

Sponsored by the State University of New York, [College of Environmental Science & Forestry](#)

[Privacy Policy](#)

[ESF Outreach](#)

[Contact our Office](#)



21st Annual New York State GIS Conference

[Home](#)[Call for Papers](#)[Highlights](#)[Registration](#)[Program](#)[Workshops](#)[Posters](#)[Doctor's Office](#)[Exhibits](#)[Underwriters](#)[History](#)[Partnership](#)[Award](#)['04 Conference](#)[Steering](#)[Committee](#)[Conference](#)[Schedule](#)[Presenters List](#)

Conference Highlights

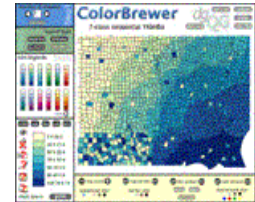
Keynote Address:

[Dr. Cynthia Brewer](#)

Professor of Geography, The Pennsylvania State University

Her current research involves map design, color theory applications in cartography, hypothesis generation in visualization, and choropleth classification for maps in series.

Click on the image at right to link to Dr. Brewer's Color Brewer, an online tool for selecting map colors.



Banquet Speaker:

Tom Henderson, *"Frozen in Time: Antarctic Remembrances"*

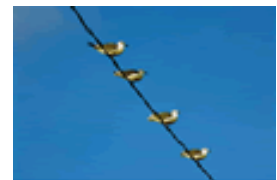
Tom will recount his experiences and share images and sounds from three trips to the Frozen Continent. His travels have included two of the most scenic mountain areas of Antarctica, the Dry Valleys, a winter-over at Amundsen-Scott South Pole Station, and a cruise in the Ross Sea aboard the research icebreaker Nathaniel B. Palmer.



BBQ'd Birds of a Feather:

Tuesday Lunch

Enjoy a barbeque lunch with fellow conference attendees who are interested in the same topic as you. It's a great way to meet new people and find out what your colleagues are up to! Some of last year's table topics included GIS in K-12 Education, Innovative Ways to Fund Projects, Future Conferences, and Data Security vs. Data Access

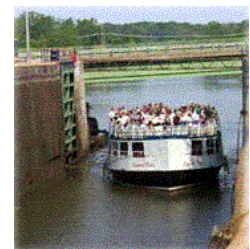


Erie Canal Cruise

[Colonial Belle](#)

Sunday, 3:00pm - 5:00pm

Plan to board the Colonial Belle for a Sunday afternoon cruise, and a relaxing ride on the historic, tranquil waters of the Erie Canal. The Colonial Belle is the largest tour boat that operates on the Erie Canal and has a capacity of 246 passengers. Take a ride on the fully enclosed lower deck or on the open air top deck for scenic viewing. The original Erie Canal was completed in 1825. A narrated tour will familiarize you with the rich history and traditional landmarks along this scenic waterway





Sponsored by the State University of New York, [College of Environmental Science & Forestry](#)
[Privacy Policy](#) [ESF Outreach](#) [Contact our Office](#)



21st Annual New York State GIS Conference



[Home](#)

[Call for Posters](#)

[Highlights](#)

[Registration](#)

[Program](#)

[Workshops](#)

[Posters](#)

[Doctor's Office](#)

[Exhibits](#)

[Underwriters](#)

[History](#)

[Partnership
Award](#)

['04 Conference](#)

[Steering
Committee](#)

[Conference
Schedule](#)

[Presenters List](#)

Program



[Conference Schedule](#)

Sunday, October 16, 2005

1:00-6:00 PM

Boat Tour on the [Colonial Belle](#)

7:00-9:00 PM

Social Hour in the Hotel Lobby

Monday, October 17, 2005

8:00 AM	Registration and Continental Breakfast
9:00 AM	Conference workshops and sessions
11:00 AM	Exhibits open
Noon	Lunch and Awards
1:00 PM	Plenary with Keynote Speaker: Cindy Brewer
2:00 PM	Break
2:30 PM	Concurrent Sessions and Workshops
5:00 PM	Reception, Exhibits and Poster Sessions
7:00 PM	Banquet with Speaker

Tuesday, October 18, 2005

8:00 AM	Continental Breakfast
9:00 AM	Concurrent sessions and workshops
10:00 AM	Break
10:30 AM	Concurrent sessions and workshops



Noon	Lunch - "BBQ'ed Birds of a Feather"
1:00 PM	Concurrent sessions and workshops
2:15 PM	Concurrent sessions and workshops
4:30 PM	Conference concludes

Sponsored by the State University of New York, [College of Environmental Science & Forestry](#)
[Privacy Policy](#) [ESF Outreach](#) [Contact our Office](#)



21st Annual New York State GIS Conference

[Home](#)[Call for Papers](#)[Highlights](#)[Registration](#)[Program](#)[Workshops](#)[Posters](#)[Doctor's Office](#)[Exhibits](#)[Underwriters](#)[History](#)[Partnership](#)[Award](#)['04 Conference](#)[Steering
Committee](#)[Conference
Schedule](#)[Presenters List](#)

Workshops

You missed some great workshops at the 2005 NYS GIS conference, so plan to come in 2006.

Management GIS workshop with Rich Messina



Sponsored by the State University of New York, [College of Environmental Science & Forestry](#)

[Privacy Policy](#)[ESF Outreach](#)[Contact our Office](#)



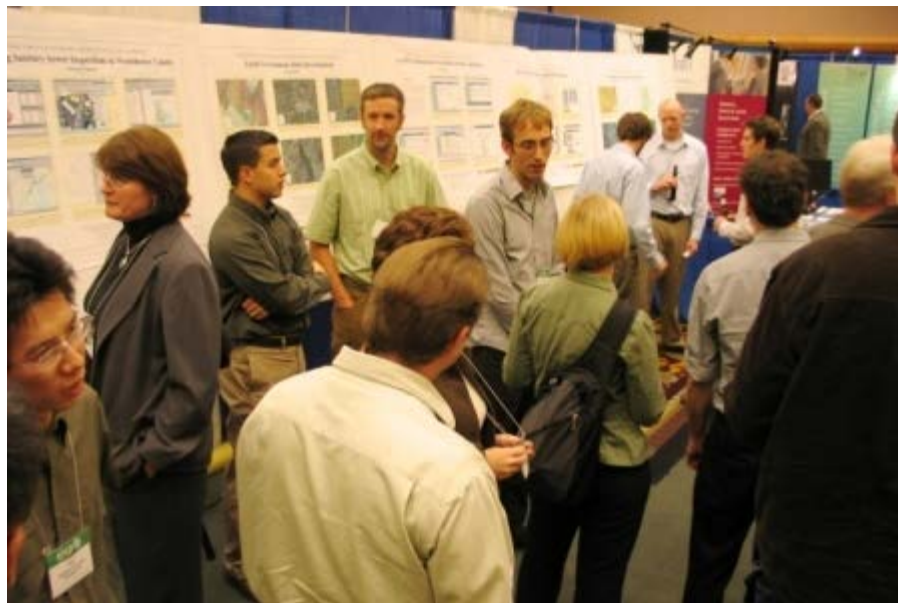
21st Annual New York State GIS Conference

[Home](#)[Call for Posters](#)[Highlights](#)[Registration](#)[Program](#)[Workshops](#)[Posters](#)[Doctor's Office](#)[Exhibits](#)[Underwriters](#)[History](#)[Partnership
Award](#)['04 Conference](#)[Steering
Committee](#)[Conference
Schedule](#)[Presenters List](#)

Posters

Poster contest at the 2005 NYS GIS conference at the Hyatt in Rochester, NY. 15 Posters were displayed for the poster contest. First Prize went to Brad Stratton, Tim Tear, Charles Ferree, Dany Kwan. Second Prize to Jonas Landes, Carol Cady, William Olsen and Jorgji Dhima. Third Prize went to Ana Hiraldo and the People's Choice to ESF's Erik Nordman.

Congratulations to all of the Winners.



People should be able to read and understand posters without the author(s) being present even though there will be a time when we will ask poster author(s) to be present. The boards we have are 4 feet high and 8 feet long so your poster can be 4x4, 4x6, or 4x8. We supply everything you need to mount your poster.

Sponsored by the State University of New York, [College of Environmental Science & Forestry](#)

[Privacy Policy](#)[ESF Outreach](#)[Contact our Office](#)



21st Annual New York State GIS Conference

[Home](#)[Call for Papers](#)[Highlights](#)[Registration](#)[Program](#)[Workshops](#)[Posters](#)[Doctor's Office](#)[Exhibits](#)[Underwriters](#)[History](#)[Partnership
Award](#)['04 Conference](#)[Steering
Committee](#)[Conference
Schedule](#)[Presenters List](#)

Doctor's Office

- **Doctor is In** sessions will be back in the exhibit area, providing experts to answer your GIS questions. [Suggest](#) a topic, and we'll recruit an expert.

Monday A.M. Break: Internet Map Services, Programming Tips (scripts, VBA, etc)

- **Monday Lunch:** Metadata Issues/Development, Dynamic Segmentation
- **Monday P.M. Break:** Map Making/Cartography, Displaying & Using Raster Data
- **Tuesday A.M. Break:** Customizing ArcGIS, Using Census Data



Sponsored by the State University of New York, [College of Environmental Science & Forestry](#)

[Privacy Policy](#)

[ESF Outreach](#)

[Contact our Office](#)



21st Annual New York State GIS Conference

[Home](#)[Highlights](#)[Registration](#)[Program](#)[Workshops](#)[Posters](#)[Doctor's Office](#)[Exhibits](#)[Underwriters](#)[History](#)[Partnership](#)[Award](#)['04 Conference](#)[Steering
Committee](#)[Conference
Schedule](#)[Presenters List](#)

Underwriters

Thank you to the following organizations for their generous contributions to the 2005 New York State GIS Conference:



GIS by ESRI®



www.iagt.org

Download a Vendor Registration Form.

Conference underwriters are acknowledged on the conference web site, in the conference program, and at the functions they sponsor. You may participate in the Conference as an exhibitor, as a Conference underwriter or both.

Underwriting opportunities:

Refreshment breaks (full sponsorship \$400/partial \$200)

Reception (full sponsorship \$3,000/partial \$500)

Door Prize(s)



21st Annual New York State GIS Conference

[Home](#)[Call for Papers](#)[Highlights](#)[Registration](#)[Program](#)[Workshops](#)[Posters](#)[Doctor's Office](#)[Exhibits](#)[Underwriters](#)[History](#)[Partnership
Award](#)['04 Conference](#)[Steering
Committee](#)[Conference
Schedule](#)[Presenters List](#)

Partnership Award

The New York State GIS Coordination Program is happy to announce the Sixth Annual GIS Partnership Award.

Partnerships are an important way to share in the development of GIS and geospatial data sets, and to enhance the usefulness of those that are already developed. One of the ways that the NY State GIS Coordinating Body is encouraging the formation of GIS partnerships in New York State is by publishing a short description of real GIS partnerships on a web page at the NY State GIS Clearinghouse web site. The Clearinghouse web page is at <http://www.nysgis.state.ny.us>, and the GIS Partnership Summary page is at <http://www.nysgis.state.ny.us/coordinationprogram/reports/partnerships/>

The GIS Partnership Summary page has been set up so those who are interested in learning more about a particular partnership or partnerships in general can read current summaries about others' experience. Contact information is included in the summary in case the reader is interested in participating in the partnership, or in learning more about it.

The goal of this contest is to improve the effectiveness of this page by generating more summaries and by increasing the awareness of its existence. An award for the best partnership will be presented at the Annual NYS GIS Conference. To become eligible, submit a summary in the correct format about your GIS Partnership that includes participants from New York before **Wednesday, September 21, 2005.**

Partnership summaries may be submitted through our simple on-line form at: <http://www.nysgis.state.ny.us/datcoord/partner.rtf>, or by E-mail to nysgis@cscic.state.ny.us. If your summary is accepted for inclusion on the summary page, it will automatically become eligible to win. Ongoing partnership that have not previously received an award are eligible to apply, as long as they submit an update to their partnership summary. Examples and links to the format are provided on the GIS Partnership Summary page given above. Entries will be judged by a select subcommittee of the NY State GIS Coordinating Body on their originality and innovation, and the scope of the partnership, such as the number or diversity of participants or the dollar savings of the partnership. Partners whose summaries are accepted for inclusion on the GIS Partnership Summary page will also be asked to keep their summary current on a periodic basis.

Contact Jeff Herter at jherter@dos.state.ny.us or (518) 474-6000 or Bill Johnson at william.johnson@cscic.state.ny.us or 518-474-5212 for answers to any questions.



21st Annual New York State GIS Conference

[Home](#)[Call for Posters](#)[Highlights](#)[Registration](#)[Program](#)[Workshops](#)[Posters](#)[Doctor's Office](#)[Exhibits](#)[Underwriters](#)[History](#)[Partnership](#)[Award](#)['04 Conference](#)[Steering
Committee](#)[Conference
Schedule](#)[List of Presenters](#)

Conference Steering Committee

Planning and management of the conference is led by the SUNY College of Environmental Science and Forestry in Syracuse with guidance from a Steering Committee. There is an elected Chairperson and the committee consists of about 12 active members. Membership can change and if you have an interest in joining the committee, please email the Chair or any committee member for more information. We welcome your involvement and ideas.

Conference Committee Members:

Name and Email	Affiliation
Lee Herrington lherrin@esf.edu	Chair, Steering Committee; Faculty of Forest & Natural Resources Mgt., ESF
John Barge jwbarge@gw.dec.state.ny.us	Adirondack Park Agency
Clark Burdick clarkburdick@yahoo.com	Onondaga Lake Clean Up Corporation
Austin Fisher afisher@appliedgis.com	Applied GIS, Inc. Schenectady, NY
Sara Frankenfeld sara@appliedgis.com	Applied GIS, Inc. Schenectady, NY
Dale Morris morrisd@erie.gov	Dep't of Environment and Planning, Erie County
Bill Johnson William.Johnson@cscic.state.ny.us	NYS GIS Coordination Program
Sharon Oskam Sharon.Oskam@cscic.state.ny.us	NYS GIS Coordination Program
Jeff Volpe jvolpe@bergmanpc.com	Bergman Associates Rochester, NY
Maureen Wakefield mwakefield@esf.edu	ESF CE Coordinator: Contact For Planning Committee
Sam Wear stw1@co.westchester.ny.us	Westchester County GIS



Sponsored by the State University of New York, [College of Environmental Science & Forestry](#)
[Privacy Policy](#) [ESF Outreach](#) [Contact our Office](#)



21st Annual New York State GIS Conference



[Home](#)

[Call for Papers](#)

[Highlights](#)

[Registration](#)

[Program](#)

[Workshops](#)

[Posters](#)

[Doctor's Office](#)

[Exhibits](#)

[Underwriters](#)

[History](#)

[Partnership](#)

[Award](#)

['04 Conference](#)

[Steering](#)

[Committee](#)

[Abstract List](#)

Abstract List

Paper Sessions

Updated 9/26/05

Monday 9:00 AM

Session 1A (Grand Ballroom A)- Spatial Analysis

The Distribution of Trihalomethanes in New York State's Public Water Supply,
Presented by Wayne Richter

Evaluation of Selected Spatial Statistics Tools in ArcGIS 9.x, presented by Antoni Magri

Session 1E- (Regency B)- Social Science

The Onondaga Nation Land Claim – A Geographer's Perspective, presented by Issa Smith

Spatial Analysis of Landscape Pattern and Ecosystem Service Valuation in Long Island's Carmans River Watershed, presented by Erik Nordman

Monday 10:30 AM

Session 2A (Grand Ballroom A)- Water Resources

Feature Analyst Extraction of Forested Buffers: Wappinger Creek Watershed,
presented by Stacy Hoppen

Stream Analyst Extension for ArcGIS: Collection, Storage and Development of NYC DEP Stream Management Data, presented by Brian O'Malley

Using ArchHydro to Model Nonpoint Pollution Impacts on the Carmans River,
presented by Horace Shaw

Session 2B (Grand Ballroom B)- Mobile Infrastructure

Improved Construction Management with Mobile GIS, presented by Nathan Carter

Mobile and Web-Based Mapping for Storm Sewer Outfalls, presented by Jeff Volpe

Using Mobile eForms for Sewer Asset Inspection and Rehabilitation Planning,
presented by Angela Horton

Session 2E (Regency B)- Special Topics Session

Alphabet Soup for the GIS Soul, presented by Liz Arabadjis

Developing an online catalog of historic aerial photos, Presented by Mark Storrings

Sinkholes Risk Modeling Using The Geographic Information System Technique,

presented by Abdul Nasir Matori

Monday 3:30 PM

Session 3A (Grand Ballroom A)- Natural Resource Management

A Trail along the Niagara Escarpment, presented by Robert Lord

Expansion of the USGS National Biological Information Infrastructure for the Northeast U.S: Invasive Species and Hudson River Watershed, presented by John Mickelson

Manifold & ArcView: Integrating GIS Applications for Wildlife Management, presented by Aaron Beaudette

Session 3B (Grand Ballroom B)- County Concerns

Cooperative Data Sharing Model – LIPA and Nassau County, presented by Joseph Jones

Enterprise-Wide GIS Implementation in Erie County, presented by Dale Morris

Taking Advantage of the Geodatabase - Monroe County Parcel Conversion Project, presented by C. Craig Cleveland

Session 3E (Regency B) Special Topics Session

Database Concepts for GIS Professionals, presented by Girk Cakmak

GeoSpatial One-Stop (GOS version2) New Opportunities for Data Sharing, Data Access, and Web Services for NYS Governments and Agencies, presented by Sam Wear

Geodatabase: From Conversion to Editing, presented by Arlene Owen

Tuesday 8:30 AM

Session 4A (Grand Ballroom A)- Infrastructure and Transportation

Using GIS to Inform Public Transportation Planning Decisions, presented by Sean Lehman

Visualization of Community Evacuation Hot Spots Using Network Analysis in ArcGIS, presented by Tao Tang

Winter Roads and ArcIMS: NYS Thruway Authority's SWIS Application, presented by Eric A. Herman

Session 4B (Grand Ballroom B)- Emergency Response

IMS Strategies for Natural Disasters: An example from the Indian Ocean Tsunami the Indian Ocean Tsunami, presented by Arthur Lembo

Critical Infrastructure Response Information System (CIRIS)

IMS Strategies for Responding to Natural Disasters: An example from the Indian Ocean Tsunami the Indian Ocean Tsunami and Hurricane Katrina, presented by Bruce Willet

Tuesday 10:30 AM

Session 5A (Grand Ballroom A) -Addressing

An Update on the New Statewide GIS Streets and Addressing Data Sets (ALIS), presented by Cheryl Benjamin

Addressing and Census Accuracy - New York's 2010 Census Planning, presented by Bob Scardamalia

Office of Children and Family Services Geographic Information Center, presented by Gail Adams

Session 5B (Grand Ballroom B)- Management

Convincing your Executives & Everyone Else: GIS Business Strategy, Budget & Roadmap, presented by Ross Smith

GIS, Assessment and IT - A Perfect Fit, presented by Dennis Brown

Knowledge Management & Organizational Change, presented by Jim Schoenberg

Tuesday 1:30 PM

Session 6A (Grand Ballroom A)- Mapping

Making Maps Versus Making Up Maps, presented by Ashraf Ghaly

Creating Semi-interactive maps with Adobe Acrobat, presented by David Kraiker

NEXTMap New York, Presented by Robert Eadie

Session 6B (Grand Ballroom B)- Raster Data

Error Modeling and Correction of USGS DEMS, presented by Nathen Harp

Integration of Pictometry and County-wide GIS, presented by Richard Annitto

Sponsored by the State University of New York, [College of Environmental Science & Forestry](#)

[Privacy Policy](#)

[ESF Outreach](#)

[Contact our Office](#)



21st Annual New York State GIS Conference

[Home](#)[Call for Posters](#)[Highlights](#)[Registration](#)[Program](#)[Workshops](#)[Posters](#)[Doctor's Office](#)[Exhibits](#)[Underwriters](#)[History](#)[Partnership](#)[Award](#)['04 Conference](#)[Steering
Committee](#)[Conference
Schedule](#)[Presenters List](#)

Advanced Cartography within GIS

Keynote Speaker Cynthia A. Brewer

Mapping tools are now almost fully integrated into GIS software, allowing cartographers to remain in an environment where database links are maintained and graphic tools allow customization of design. This improvement in tools allows application of map design principles, such as nuanced color specification, design for colorblind readers, complex multi-layered line styles, custom-placed labels, and refined terrain representations that combine elevation tints and relief shading. Cindy will highlight map design guidance she presents in her new book "Designing Better Maps: A Guide for GIS Users." She will reflect on wise critiques from her students of GIS software function and structure as well as experiences with mapping from a variety of consulting experiences, such as designing atlases of Census 2000 data. She will discuss both practical and research challenges in cartography using a variety of map types as examples.

Cynthia A. Brewer is an Associate Professor in the Department of Geography at The Pennsylvania State University, where she teaches introductory cartography and map design courses. Her research emphases are map design and color use in cartography and visualization. In recent work, she has examined choropleth classification issues and hypothesis generation from epidemiological maps. Cindy completed Master's and Ph.D. degrees at Michigan State University. Before she joined the faculty at Penn State, she also taught cartography at San Diego State University and the University of California, Santa Barbara. Cindy is the author of the newly published book *Designing Better Maps: A Guide for GIS Users*.

She has also published her research in various journals, including *Cartography and GIS*, *Annals of the Association of American Geographers*, and *Cartographic Perspectives*. She is the author of *ColorBrewer.org*, a Web-based tool for selecting map color schemes. While on sabbatical with the U.S. Census Bureau, she produced *Mapping Census 2000: The Geography of U.S. Diversity*. She is a consultant for the Census Bureau, National Park Service, National Cancer Institute, and National Center for Health Statistics, and ESRI. Cindy has served on editorial boards of professional journals, as Chair of the U.S. National Committee to the International Cartographic Association, and as President of the North American Cartographic Information Society. She regularly presents her work at cartography, geography, and color science conferences.

For more information on Cynthia Brewer, please click [here](#).

Sponsored by the State University of New York, [College of Environmental Science & Forestry](#)

[Privacy Policy](#)

[ESF Outreach](#)

[Contact our Office](#)



21st Annual New York State GIS Conference

[Home](#)[Call for Posters](#)[Highlights](#)[Registration](#)[Program](#)[Workshops](#)[Posters](#)[Doctor's Office](#)[Exhibits](#)[Underwriters](#)[History](#)[Partnership](#)[Award](#)['04 Conference](#)[Steering
Committee](#)[Conference
Schedule](#)[Presenters List](#)

Call for Posters



Go to the online submission form [here](#).

We prefer online submission of paper abstracts. The deadline for submission is **September 21st, 2005**. However, if online submission is inconvenient or does not work you may submit by fax or snail mail to ESF Outreach.. Phone numbers and mailing address [HERE](#)

Poster presentations are invited from members of New York's GIS community. Presentations on any topic of interest to the GIS community are invited. We welcome student participation at the NYS GIS 2005 conference.

Potential Poster Topics ...Ideas to Consider...But don't limit yourself to these topics

If you're doing it, others in the NYS GIS Community will be interested too!

- Technical subjects
- Scientific and forward looking topics
- Internet and communications
- Vendor forum
- Emerging GIS technologies
- Remote sensing and data acquisition
- Business geographics
- Financing GIS
- Data issues
- Government GIS programs
- Applications (business, environment, local government, etc.)
- School and library programs

Sponsored by the State University of New York, [College of Environmental Science & Forestry](#)

[Privacy Policy](#)[ESF Outreach](#)[Contact our Office](#)



21st Annual New York State GIS Conference



[Home](#)

[2005 Highlights](#)

[2005 Program](#)

[2005 Workshops](#)

[2005 Posters](#)

[2005 Doctor's
Office](#)

[2005 Exhibits](#)

[2005
Underwriters](#)

[History](#)

[2005 Partnership
Award](#)

['04 Conference](#)

[Steering
Committee](#)

[2005 Conference
Schedule](#)

[2005 Presenters
List](#)

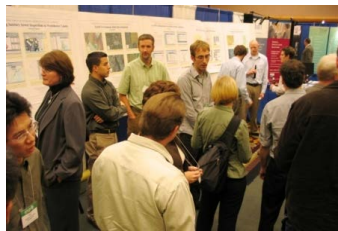
**Join us on Oct. 23-24, 2006 New York State GIS Conference at the
[Crowne Plaza Resort and Golf Club, Lake Placid](#)**



**2005 New York State GIS Conference
Rochester Hyatt • 333 people attended on October
17-18, 2005**

***A Colorful Keynote was delivered by
[Cynthia Brewer](#)***

[Check out ColorBrewer](#)



[This Year's Posters in Rochester!](#)

15 Posters were displayed for the poster contest. . .First Prize went to Brad Stratton, Tim Tear, Charles Ferree, Dany Kwan. . .Second Prize to Jonas Landes, Carol Cady, William Olsen and Jorgji Dhima, . . .Third Prize went to Ana Hiraldo and the People's Choice to ESF's Erik Nordman.
Congratulations to all of the Winners.



[Exhibitors: In their Booths at the Hyatt!](#)

40 Vendors made the exhibit area an exciting part of the conference this year AGAIN!

Special thanks to ESRI and IAGT for their sponsorship at the 2005 conference.

Sponsored by the State University of New York, [College of Environmental Science & Forestry](#)

[Privacy Policy](#)

[ESF Outreach](#)

[Contact our Office](#)



21st Annual New York State GIS Conference



A Very Brief History of the Conference

[Home](#)[Call for Papers](#)[Highlights](#)[Registration](#)[Program](#)[Workshops](#)[Posters](#)[Doctor's Office](#)[Exhibits](#)[Underwriters](#)[History](#)[Partnership
Award](#)['04 Conference](#)[Steering
Committee](#)[Conference
Schedule](#)[Presenters List](#)

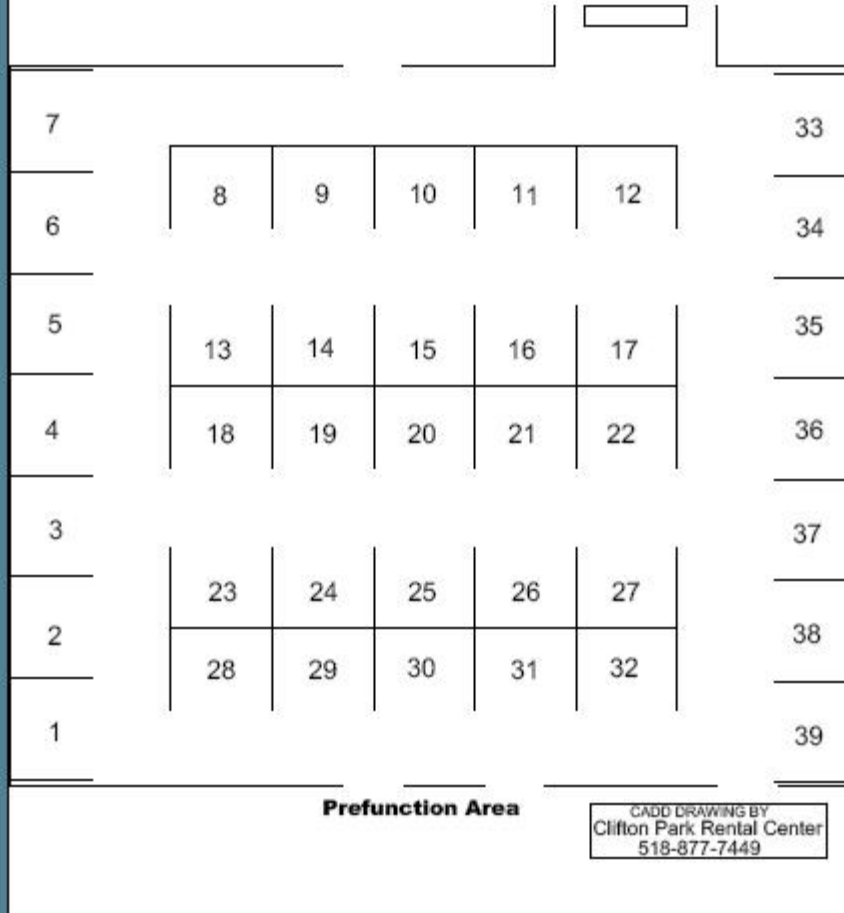
Twenty years ago a small gathering of early GIS users established the New York State GIS Conference. Since that time it has become a major opportunity for hundreds of GIS users throughout New York State to exchange information and ideas regarding the use of GIS in business, government, and academia. In recent history the conference venue has moved back and forth across the state between Albany and Syracuse. The range of venues has been recently expanded to the mid Hudson area ('04) and Rochester ('05).

Sponsored by the State University of New York, [College of Environmental Science & Forestry](#)

[Privacy Policy](#)[ESF Outreach](#)[Contact our Office](#)

HYATT REGENCY

39 8' X 10' Booths





21st Annual New York State GIS Conference

[Home](#)[Call for Papers](#)[Highlights](#)[Registration](#)[Program](#)[Workshops](#)[Posters](#)[Doctor's Office](#)[Exhibits](#)[Underwriters](#)[History](#)[Partnership](#)[Award](#)['04 Conference](#)[Steering
Committee](#)

Registration

Download a Conference Registration Form [here](#).

Lodging:

A block of rooms has been reserved at the [Hyatt Regency Rochester](#) for conference participants at a conference rate of \$112 single or double per night. You may check-in at 3:00 pm and check-out at noon. Please specify the NYS Geographic Information Systems Conference when you register to receive this rate. Reservations may be made by calling (800) 233-1234. The deadline for room reservations is **September 23, 2005**.

To Register for the conference:

Please fill out and mail the registration [form](#) with your registration fee or fax the form to (315) 470-6890. Mail to: ESF Outreach, SUNY College of Environmental Science & Forestry, Syracuse, NY 13210.

Registration Deadline:

Registrations *and payment* must be received by **Wednesday, September 21, 2005** to qualify for the early discount. Government or corporate purchase orders received by the deadline qualify for the early discount.

Registration fees:

Early rate, received **by Wednesday, September 21, 2005**:

- \$115 Registration
- \$85 Student Registration
- \$65 One day Registration
- \$595 Exhibitor Registration

Standard rate, received **after Wednesday, September 21, 2005**:

- \$145 Late Registration
- \$115 Late Student Registration
- \$675 Late Exhibitor Registration

Please make checks payable to **SUNY Research Foundation**.

Your registration fee includes materials, access to exhibits, workshops and sessions with continental breakfast, breaks and lunch on 10/17 and 10/18, and a reception on 10/17.

Banquet tickets:

Tickets for dinner on Monday, October 17th, are available for an additional fee of \$30 each. Please indicate the number of tickets on the registration form.

Refunds:

Participants who wish to cancel must give written notice by **September 21, 2005** to receive a refund minus an administrative fee of \$50. After that date refunds will not be made. No refund requests by phone, please. Substitutions are permissible at any time. SUNY-ESF reserves the right to cancel a program in the event of insufficient registrations. A full refund will be given if a program is cancelled.



2005 New York State GIS Conference at Rochester Hyatt

Monday, October 17, 2005						
8:00 AM	Registration begins					
9:00 AM	Concurrent Sessions and Workshops					
Location	Grand Ballroom A	Grand Ballroom B	Grand Ballroom C	Regency A	Regency B	Regency C
	Session Topic: Water Resources	Workshop: GIS Project Management	Workshop: Imagery	Workshop: Intro to geodatabases	Session Topic: Social Science	Private Sector Advisory Group Meeting
10:00 AM	Concurrent Session and Workshops					
Location	Grand Ballroom A	Grand Ballroom B	Grand Ballroom C	Regency A	Regency B	Regency C
	Session Topic: Water Resources	Session Topic: Mobile Infrastructure	Workshop: FOIL	Workshop: CAD/GIS	Special Topics Session	Local Gov't Meeting
12:00 PM	Welcome and Conference Plenary in Grand Ballroom ABC NYS GIS/LIS Assoc. Plenary Presentation:State of GIS in NYS					
3:00 PM	Concurrent Session and Workshops					
Location	Grand Ballroom A	Grand Ballroom B	Grand Ballroom C	Regency A	Regency B	Regency C
	Session Topic: Natural Resource Management	Session Topic: County Concerns	Workshop: Fun with GIS	Workshop: CAD/GIS	Special Topics Session	Standards Meeting
5:15 PM	Reception					
6:30 PM	Banquet in Hotel					
Tuesday, October 18 2005						
7:00 AM	Continental Breakfast					
8:00 AM	Concurrent Session and Workshops					
Location	Grand Ballroom A	Grand Ballroom B	Grand Ballroom C	Regency A	Regency B	Regency C
	Session Topic: Infrastructure and Transportation	Session Topic: Emergency Response	Workshop: Cartography	Workshop: GPS 1	Workshop: GIS Business Development in NY	Cadastral Data Workgroup Meeting
10:00 AM	AM Break /Exhibit area in Grand Ballroom					
10:30 AM	Concurrent Session and Workshops					
Location	Grand Ballroom A	Grand Ballroom B	Grand Ballroom C	Regency A	Regency B	Regency C
	Session Topic:	Session Topic:	Workshop:	Workshop:	Workshop:	NYS GIS/LIS

	<i>Addressing</i>	<i>Management</i>	<i>ARCSDE</i>	<i>GPS 2</i>	<i>Tax Mapping And GIS</i>	<i>Meeting Prof. Cert GISP</i>
12:00 PM	Lunch at Convention Center and BBQ Birds of a Feather					
1:30 PM	Concurrent Session and Workshops					
Location	Grand Ballroom A	Grand Ballroom B	Grand Ballroom C	Regency A	Regency B	Regency C
	<i>Session Topic: Mapping</i>	<i>Session Topic: Raster Data</i>	<i>Workshop: Spatial SQL</i>	<i>Workshop: NCEES</i>		<i>Landuse/ Land cover Meeting</i>
2:00 PM	Exhibitor Tear Down					

1	Household Level Influence on Spatial Variability of Soil Properties in Western Kenya	poster	Jane Kapkiyai
2	Mapping Cultural Changes in the Township of Canton,	poster	Jonas Landes
3	Nautical Charts for Lake George	poster	Sara Frankenfeld
4	Object-Oriented Land Cover Classification Using Quickbird Satellite Imagery	poster	Erik Nordman
5	Using GIS to examine street patterns	poster	Yang Yizhao
6	ArcSDE for Dummies	wk shop	Larry Spraker
7	certification, licensing, the National Council of Examiners for Engineering and Surveying (NCEES) Model Law, and licensing activity in New York.	wk shop	Ed Freeborn
8			
9	A Trail along the Niagara Escarpment	Pres	Robert Lord
10	Addressing and Census Accuracy - New York's 2010 Census Planning	Pres	Robert Scardamalia
11	Alphabet Soup for the GIS Soul	Pres	Liz Arabadjis
12	Convincing your Executives & Everyone Else: GIS Business Strategy, Budget & Roadmap	Pres	Ross Smith +
13	Cooperative Data Sharing Model – LIPA and Nassau County	Pres	Joe Jones
14	Creating Semi-interactive maps with Adobe Acrobat	Pres	David Kraiker
15	Database Concepts for GIS Professionals	Pres	Girk Cakmak
16	Developing an online catalog of historic aerial photos	Pres	Mark Storrings
17	Distribution of Trihalomethanes in New York State's Public Water Supply	Pres	
18	Enterprise Wide GIS Implementation in Erie County	Pres	Jeff Volpe
19	Error Modeling and Correction of USGS DEMS	Pres	Nathen Harp
20	Expansion of the USGS National Biological Information Infrastructure for the Northeast U.S: Invasive Species and Hudson River Watershed	Pres	John Mickelson
21	Feature Analyst Extraction of Forested Buffers: Wappinger Creek Watershed	Pres	Stacy Hoppen
22	Geographic distribution of pollutants in the Carmans River	Pres	Tracey O'Mally
23	GIS, Assessment and IT - A Perfect Fit	Pres	Dennis Brown
24	Improved Construction Management with Mobile GIS	Pres	Nathan Carter
25	IMS Strategies for Natural Disasters: An example from the Indian Ocean Tsunami	Pres	Arthur Lembo
26	Integration of Pictometry and County-wide GIS	Pres	Richard Annitto
27	Knowledge Management & Organizational Change	Pres	Jim Schoenberg
28	Making Maps Versus Making Up Maps	Pres	Ashraf Ghaly
29	Manifold & ArcView: Integrating GIS Applications for Wildlife Management	Pres	Aaron Beaudette
30	Mobile and Web-Based Mapping for Storm Sewer Outfalls	Pres	Jeff Volpe
31	Researchers Encouraged to Apply to Use GIS for Breast Cancer Studies on Long Island	Pres	Linda Anderson
32	Sinkholes Risk Modeling Using The Geographic Information System Technique	Pres	Abdul Nasir Maton
33	Stream Analyst Extension for ArcGIS: Collection, Storage and Development of NYC DEP Stream Management Data	Pres	Brian O'Malley
34	Taking Advantage of the GeoDatabase - Monroe County Parcel Conversion Project	Pres	Craig Cleavland
35	The Onondaga Nation Land Claim - A Geographer's Perspective	Pres	Issa Smith
36	Using ArcHydro to model non-point pollution in the Carmans River	Pres	Horace Shaw
37	Using GIS to Inform Public Transportation Planning Decisions	Pres	Sean Lehman
38	Using Mobile eForms for Sewer Asset Inspection and Rehabilitation Planning	Pres	Angela Horton
39	Visualization of Community Evacuation Hot Spots Using Network Analysis in ArcGIS	Pres	Tao Tang
40	Winter Roads and ArcIMS: NYS Thruway Authority's SWIS Application	Pres	Eric Herman
41	GeoSpatial One-Stop (GOS) Version 2	Pres	Sam Wear
42	Spatial Analysis of Landscape Pattern and Ecosystem	Pres	Erik Nordman
43	Development of an ArcIMS Criminal Data Warehouse Intranet Application	Poster	Tong Zhou
44	Automated Sewer Inspections for Westchester Cty Department of Env. Facilities	Poster	Deborah Parker
45	Westchester County GIS 2005 Environmental Map Series	Poster	Chris Smith
46	Westchester County GIS: New System Architecture and Web Applications	Poster	Xiaobo Cui
47	Creating a Digital Elevation and Hillshade Model for Westchester County	Poster	Cindy Louie
48	Local Gov't Data Integration with Westchester County GIS	Poster	Ana Hiraldo



21st Annual New York State GIS Conference

[Home](#)[Call for Papers](#)[Highlights](#)[Registration](#)[Program](#)[Workshops](#)[Posters](#)[Doctor's Office](#)[Exhibits](#)[Underwriters](#)[History](#)[Partnership](#)[Award](#)['04 Conference](#)[Steering](#)[Committee](#)[Abstract List](#)[Abstract List](#)

Paper Sessions

Updated 9/26/05

Monday 9:00 AM

Session 1A (Grand Ballroom A)- Spatial Analysis

The Distribution of Trihalomethanes in New York State's Public Water Supply,
Presented by Wayne Richter - **cancelled**

Evaluation of Selected Spatial Statistics Tools in ArcGIS 9.x, presented by Antoni Magri

Session 1E- (Regency B)- Social Science

The Onondaga Nation Land Claim – A Geographer's Perspective, presented by Issa Smith

Spatial Analysis of Landscape Pattern and Ecosystem Service Valuation in Long Island's Carmans River Watershed, presented by Erik Nordman

Monday 10:30 AM

Session 2A (Grand Ballroom A)- Water Resources

Feature Analyst Extraction of Forested Buffers: Wappinger Creek Watershed,
presented by Stacy Hoppen

Stream Analyst Extension for ArcGIS: Collection, Storage and Development of NYC DEP Stream Management Data, presented by Brian O'Malley

Using ArchHydro to Model Nonpoint Pollution Impacts on the Carmans River,
presented by Horace Shaw

Session 2B (Grand Ballroom B)- Mobile Infrastructure

Improved Construction Management with Mobile GIS, presented by Nathan Carter

Mobile and Web-Based Mapping for Storm Sewer Outfalls, presented by Jeff Volpe

Using Mobile eForms for Sewer Asset Inspection and Rehabilitation Planning,
presented by Angela Horton

Session 2E (Regency B)- Special Topics Session

Alphabet Soup for the GIS Soul, presented by Liz Arabadjis

Developing an online catalog of historic aerial photos, Presented by Mark Storrings

Sinkholes Risk Modeling Using The Geographic Information System Technique,

presented by Abdul Nasir Matori - **cancelled**

Monday 3:30 PM

Session 3A (Grand Ballroom A)- Natural Resource Management

A Trail along the Niagara Escarpment, presented by Robert Lord

Expansion of the USGS National Biological Information Infrastructure for the Northeast U.S: Invasive Species and Hudson River Watershed, presented by John Mickelson - **cancelled**

Manifold & ArcView: Integrating GIS Applications for Wildlife Management, presented by Aaron Beaudette

Session 3B (Grand Ballroom B)- County Concerns

Cooperative Data Sharing Model – LIPA and Nassau County, presented by Joseph Jones

Enterprise-Wide GIS Implementation in Erie County, presented by Dale Morris

Taking Advantage of the Geodatabase - Monroe County Parcel Conversion Project, presented by C. Craig Cleveland

Session 3E (Regency B) Special Topics Session

Database Concepts for GIS Professionals, presented by Girk Cakmak

GeoSpatial One-Stop (GOS version2) New Opportunities for Data Sharing, Data Access, and Web Services for NYS Governments and Agencies, presented by Sam Wear

Geodatabase: From Conversion to Editing, presented by Arlene Owen

Tuesday 8:30 AM

Session 4A (Grand Ballroom A)- Infrastructure and Transportation

Using GIS to Inform Public Transportation Planning Decisions, presented by Sean Lehman

Visualization of Community Evacuation Hot Spots Using Network Analysis in ArcGIS, presented by Tao Tang

Winter Roads and ArcIMS: NYS Thruway Authority's SWIS Application, presented by Eric A. Herman

Session 4B (Grand Ballroom B)- Emergency Response

IMS Strategies for Natural Disasters: An example from the Indian Ocean Tsunami the Indian Ocean Tsunami, presented by Arthur Lembo

Critical Infrastructure Response Information System (CIRIS)

IMS Strategies for Responding to Natural Disasters: An example from the Indian Ocean Tsunami the Indian Ocean Tsunami and Hurricane Katrina, presented by Bruce Willet

Tuesday 10:30 AM

Session 5A (Grand Ballroom A) -Addressing

An Update on the New Statewide GIS Streets and Addressing Data Sets (ALIS), presented by Cheryl Benjamin

Addressing and Census Accuracy - New York's 2010 Census Planning, presented by Bob Scardamalia

Office of Children and Family Services Geographic Information Center, presented by Gail Adams

Session 5B (Grand Ballroom B)- Management

Convincing your Executives & Everyone Else: GIS Business Strategy, Budget & Roadmap, presented by Ross Smith

GIS, Assessment and IT - A Perfect Fit, presented by Dennis Brown

Knowledge Management & Organizational Change, presented by Jim Schoenberg

Tuesday 1:30 PM

Session 6A (Grand Ballroom A)- Mapping

Making Maps Versus Making Up Maps, presented by Ashraf Ghaly

Creating Semi-interactive maps with Adobe Acrobat, presented by David Kraiker

NEXTMap New York, Presented by Robert Eadie

Session 6B (Grand Ballroom B)- Raster Data

Error Modeling and Correction of USGS DEMS, presented by Nathen Harp

Integration of Pictometry and County-wide GIS, presented by Richard Annitto

Sponsored by the State University of New York, [College of Environmental Science & Forestry](#)

[Privacy Policy](#)

[ESF Outreach](#)

[Contact our Office](#)

Embedded Secure Document

The file <http://www.esf.edu/nysgisconf/2005/site/docs/GISreg05.pdf> is a secure document that has been embedded in this document. Double click the pushpin to view.

