

2023 NY GeoCon, Albany, NY

ArcGIS Experience Builder: Introduction

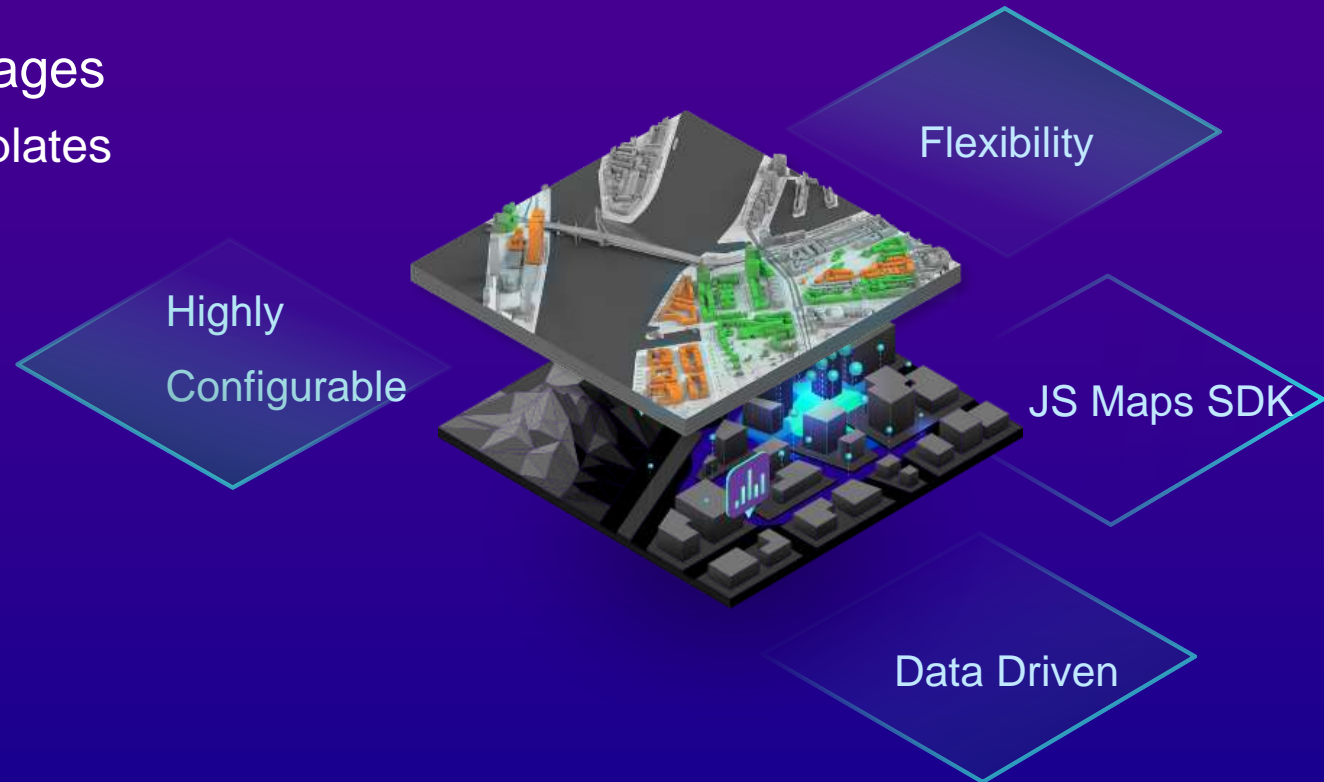
Mark Scott, Senior Solution Engineer, Esri Local Government Team, msscott@esri.com



What Is ArcGIS Experience Builder?

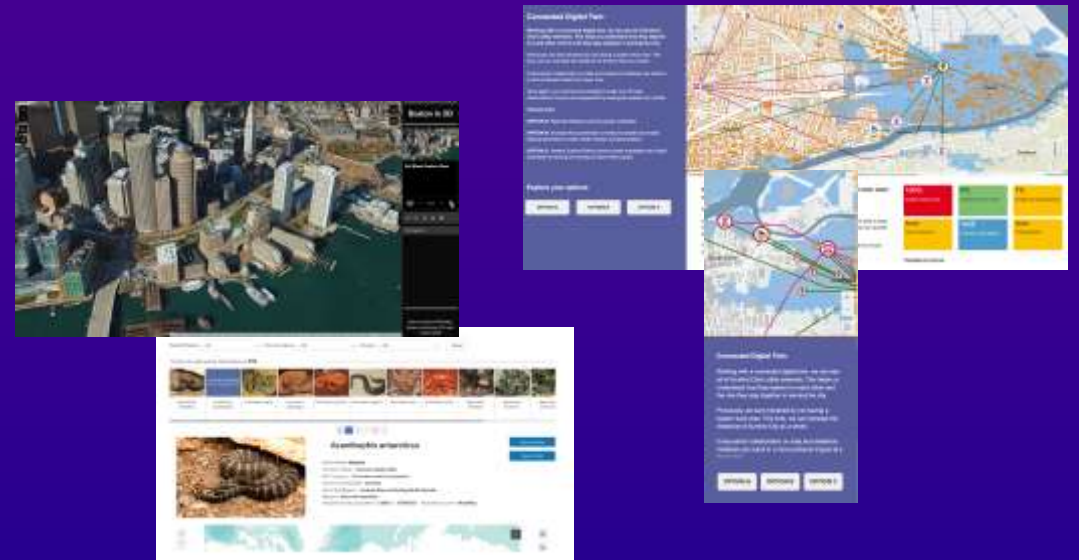
Create web apps you envision

- Design and build web apps and pages
 - Explore design decisions with templates
 - Access ready-to-use widgets
 - Build custom tools
- Data driven
- Modern interface



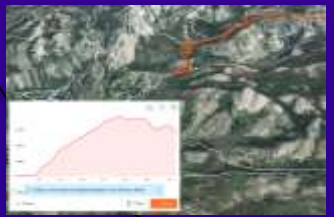
ArcGIS Experience Builder Key Features

- Flexible design
- Mobile optimization
- Interconnection between widgets
- 2D and 3D in one app
- Integration with other ArcGIS apps
- Extensibility



Available in ArcGIS Online, ArcGIS Enterprise, and developer edition

3D



Web pages



Mobile



Gallery



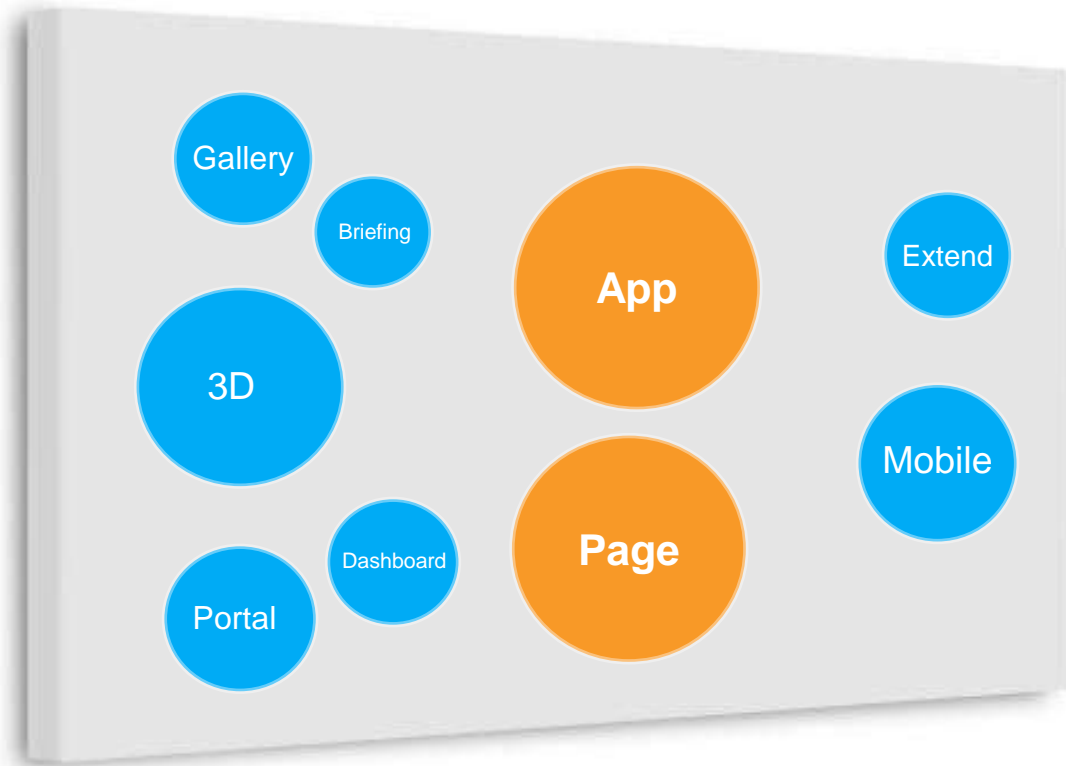
Apps



Portal

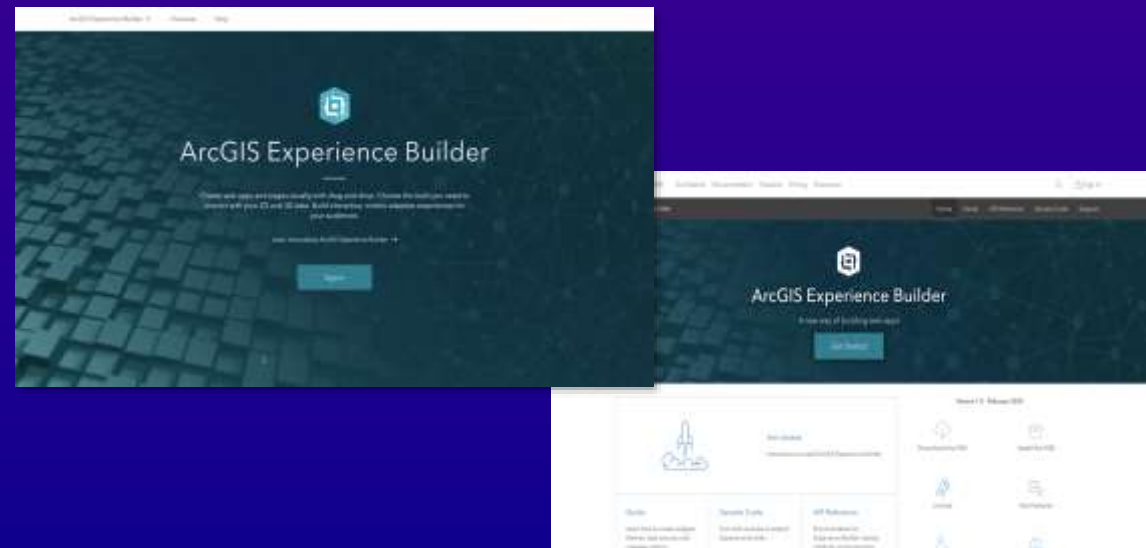


Canvas



ArcGIS Experience Builder Offering

- In ArcGIS Online and ArcGIS Enterprise
- ArcGIS Online URL: <https://experience.arcgis.com/>
- Developer Edition
 - Download and install locally



ArcGIS Experience Builder Licensing



- Essential Apps Bundle
 - Must have a Creator or GIS Professional user type to create experiences
- ArcGIS Developer subscription
 - For developers who are not part of an ArcGIS organization to use Developer Edition

An
experience

Design/
config



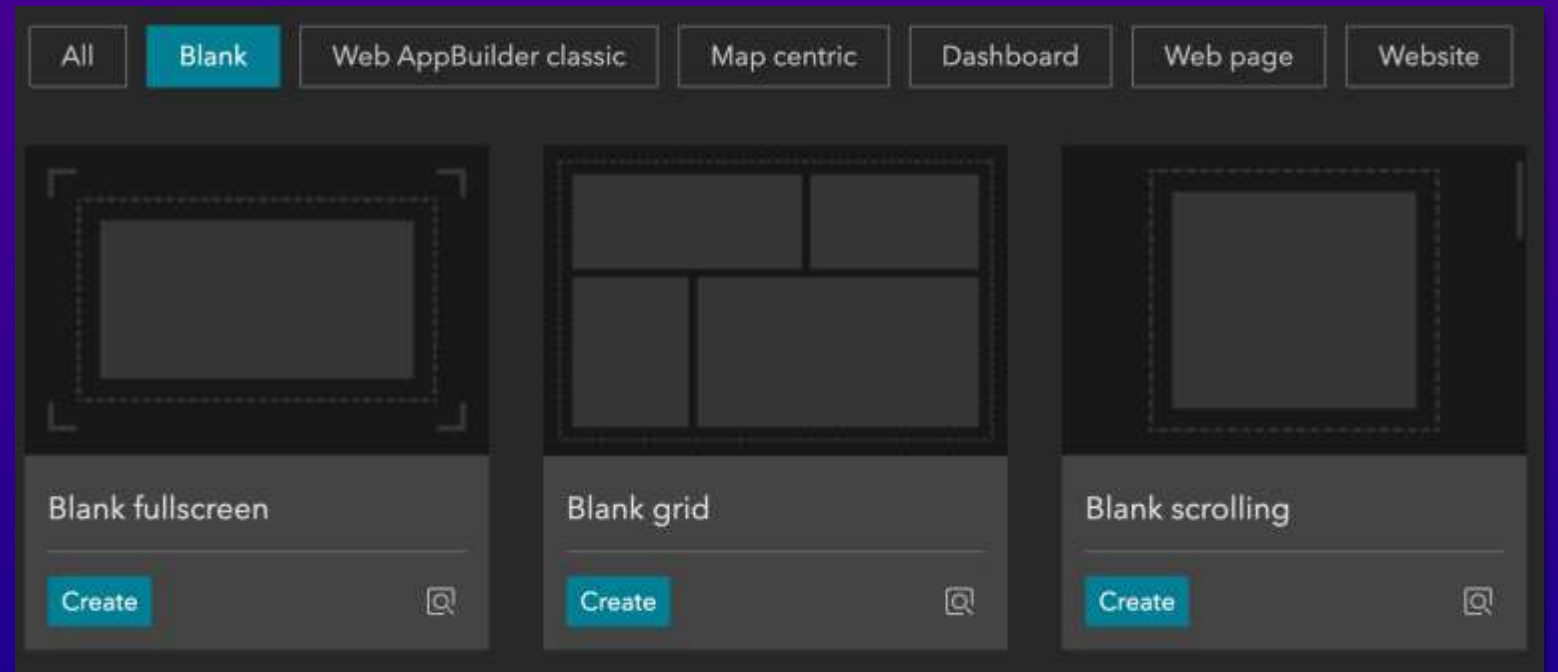
Template

Building block



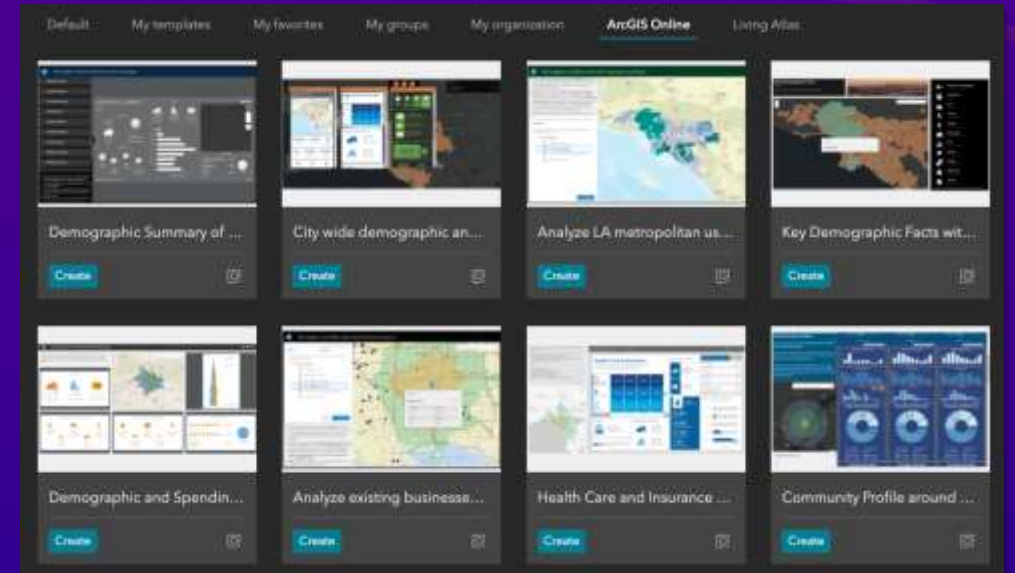
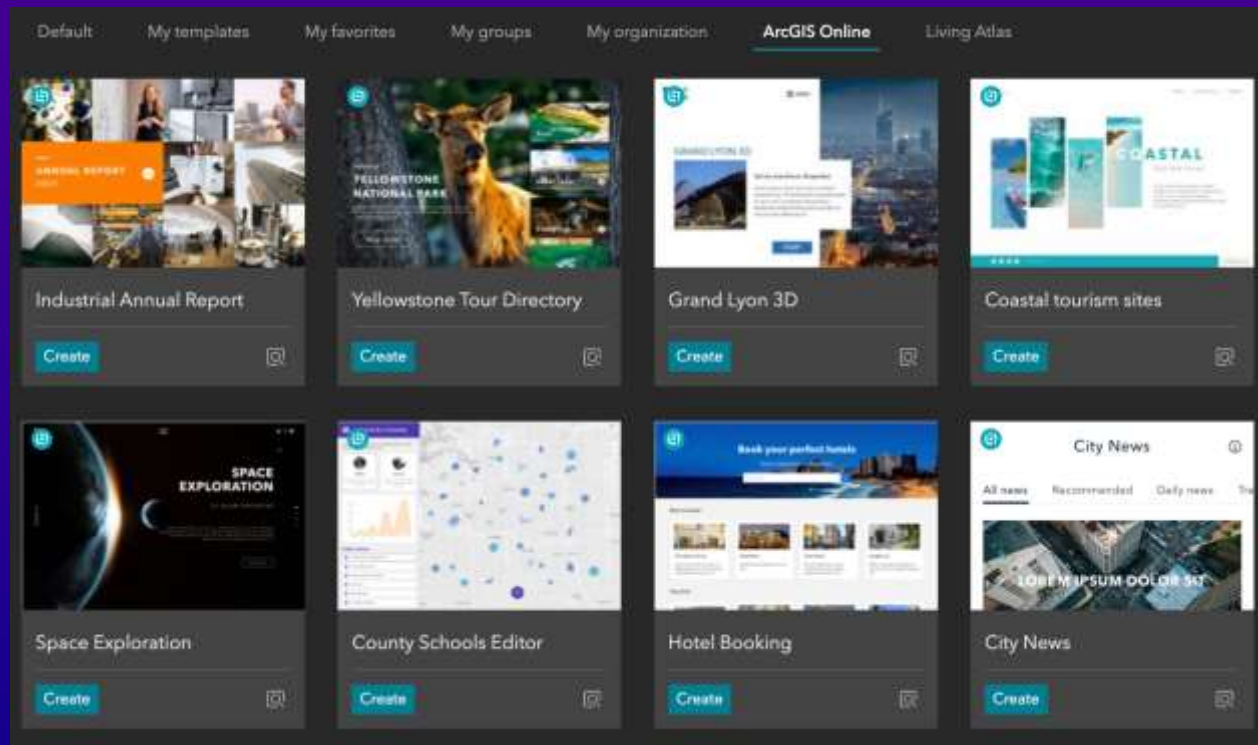
Default Templates

- Fullscreen
- Scrolling
- Grid



Public Templates

Available in ArcGIS Online



Business
Analyst
Templates

Showcase
New
Features

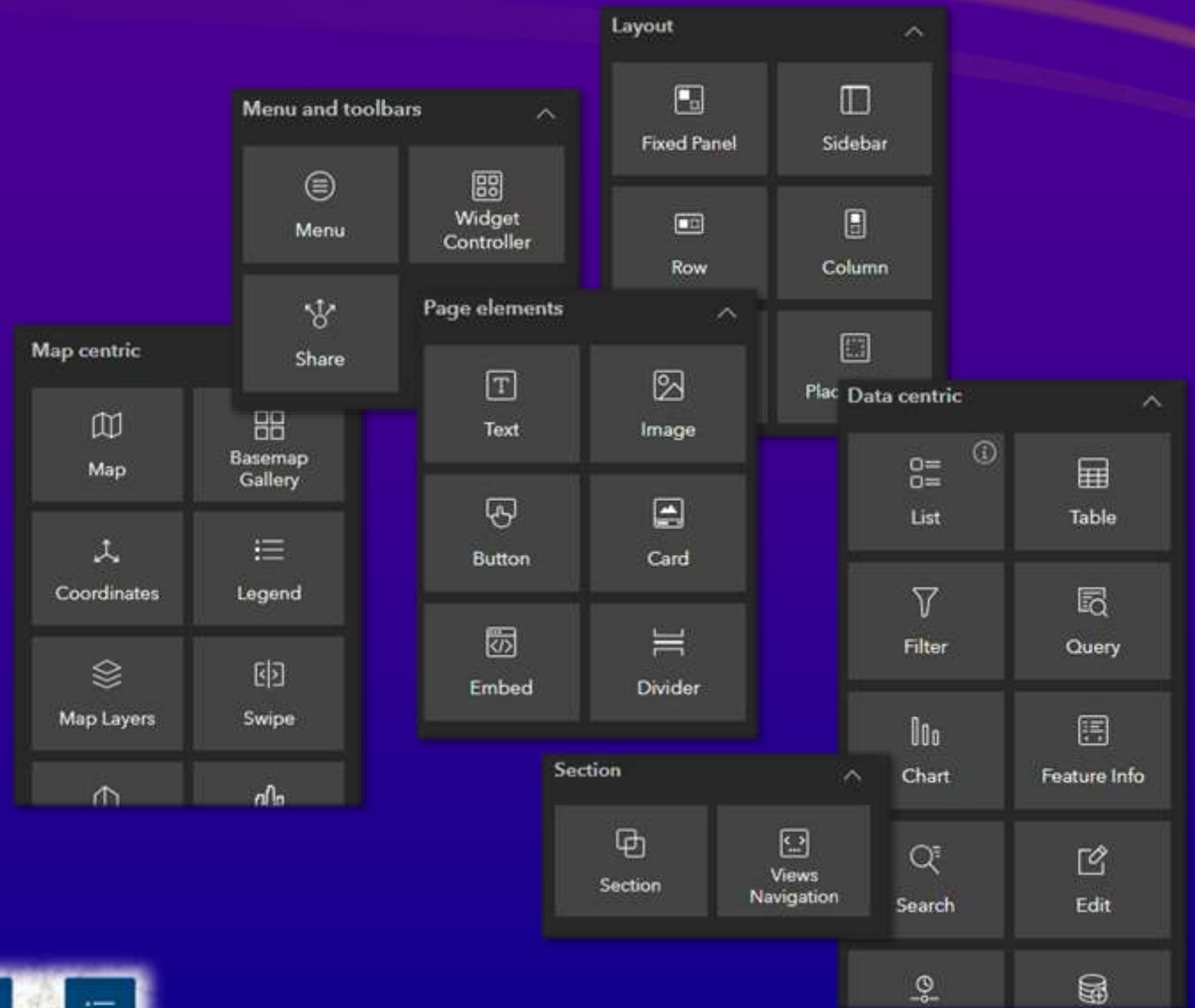
Widget

Building block



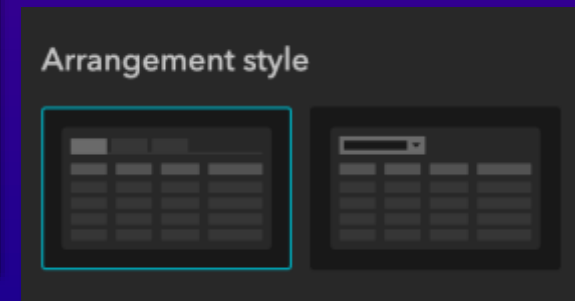
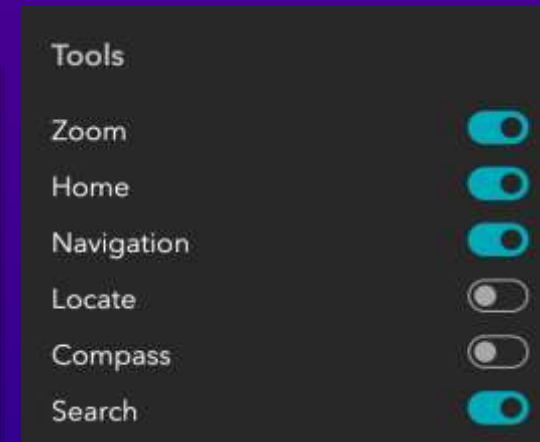
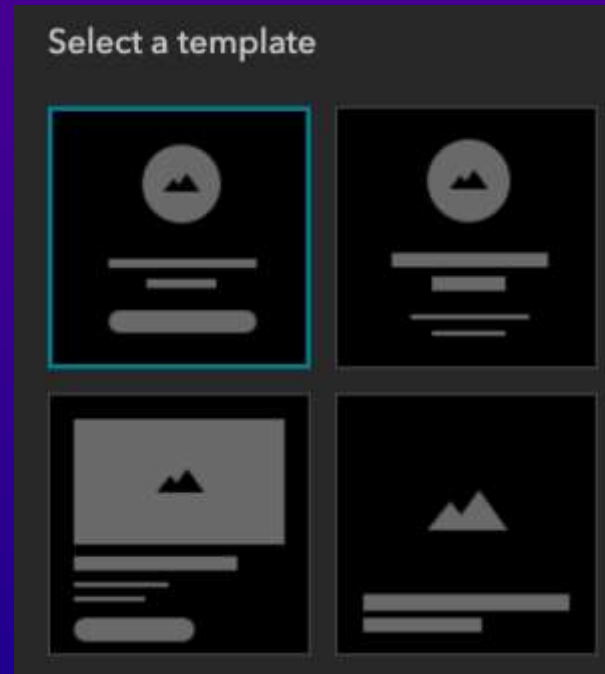
Types of Widgets

- Map centric
- Data centric
- Page elements
- Menu and toolbars
- Layout
- Section



Widget Content

- Data sources
- Options
- Tools
- Modes
- Templates



Widget Style

Size & Position

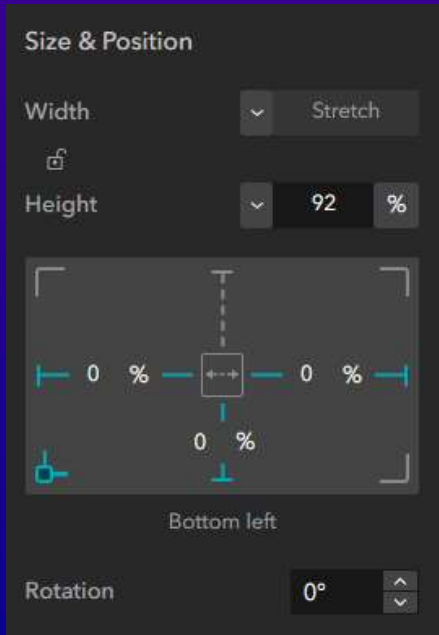
Size & Position

Width

Height %

Bottom left

Rotation



Background, Border & Box shadow

Background

Fill

Image

Position

Border

Border radius px

Box shadow

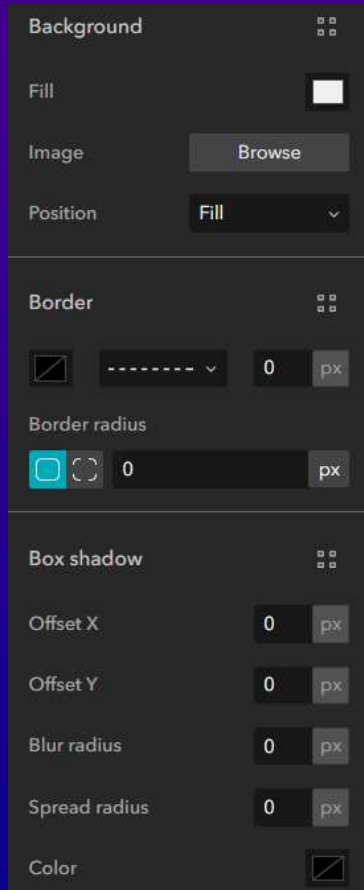
Offset X px

Offset Y px

Blur radius px

Spread radius px

Color



Animation

Animation settings

None

Fade in

Float in

Fly in

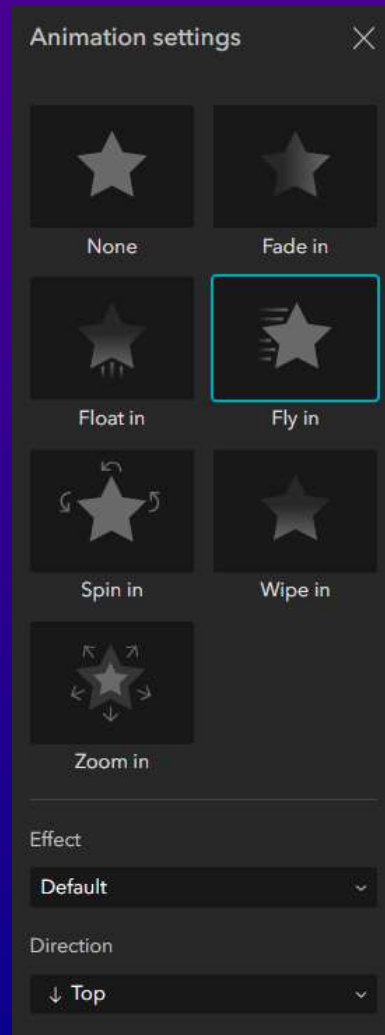
Spin in

Wipe in

Zoom in

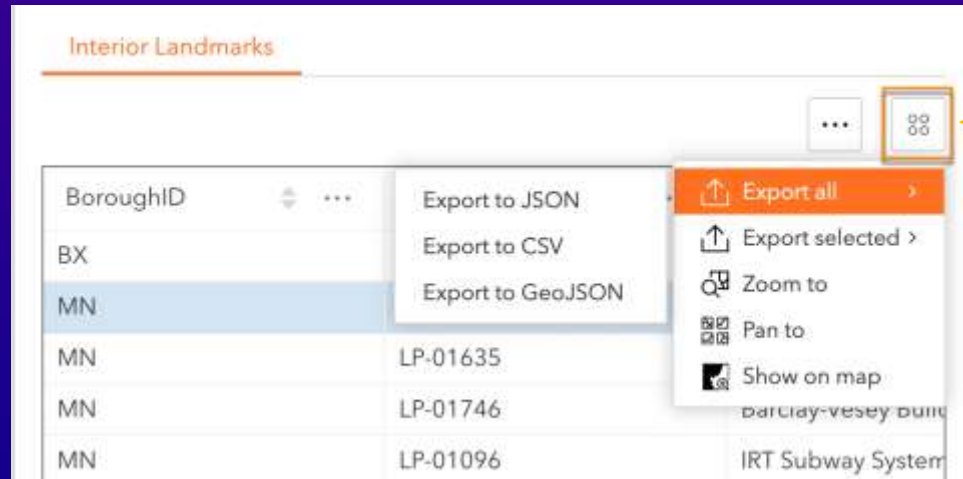
Effect

Direction

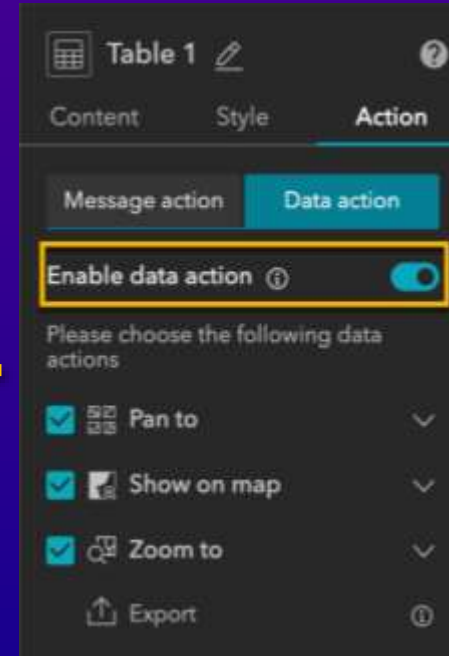


Widget Action

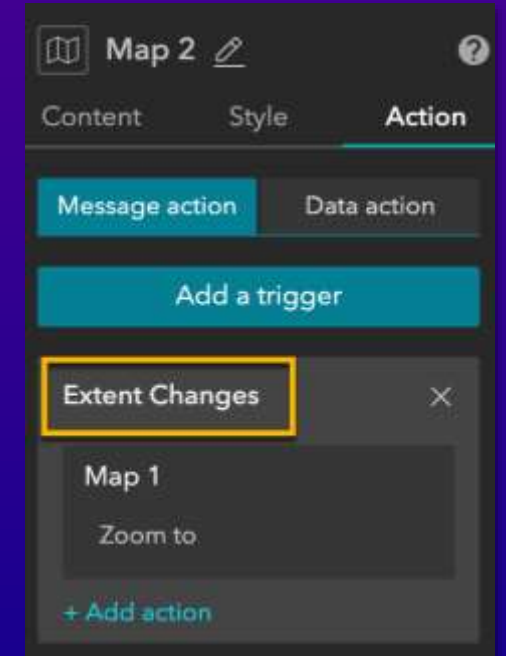
- Widgets communicate with each other
- Data actions are opt-in
- Message actions are automatic



Data action



Message action



Message Action

- A **trigger** broadcasts a message
- **Targets** listen to the message
- **Actions** by targets

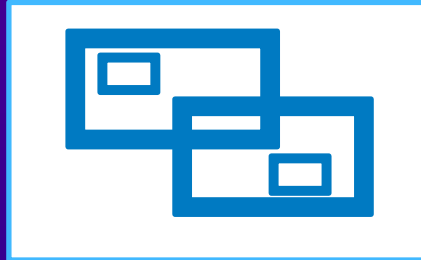
Trigger	Target	Action
Extent Changes from Map 1	Map 2	Zoom to the same extent as Map 1
	Framework (data)	Filter Data Records For example, List 1 displays only features within the current map extent

Layout Widgets

Row



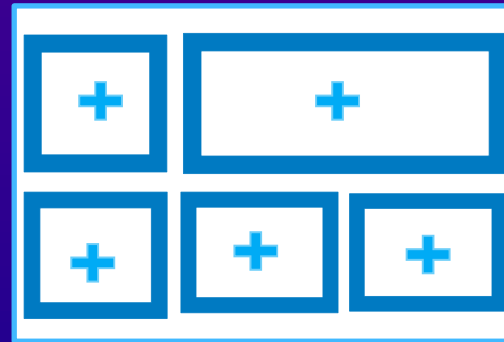
Fixed Panel



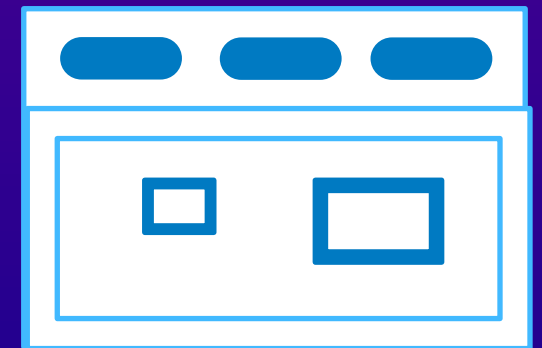
Column



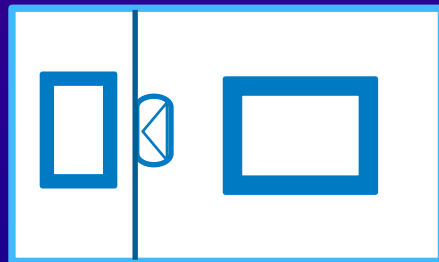
Grid



Section & View



Sidebar



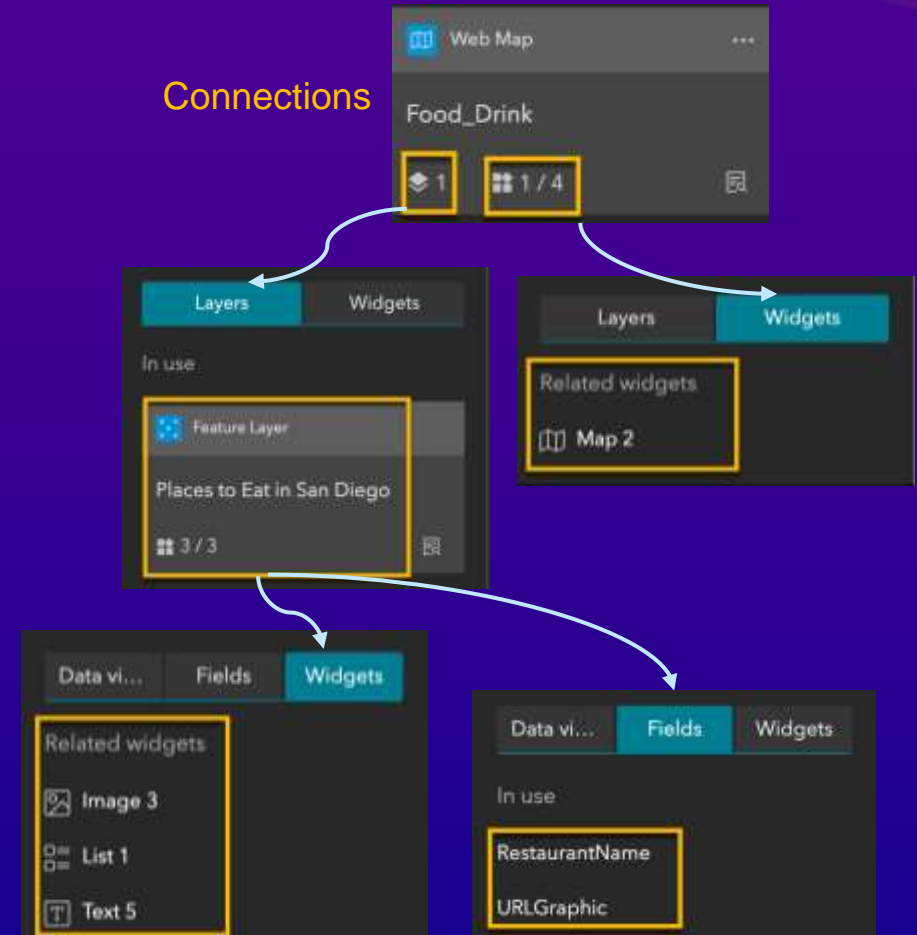
Data Source

Building block



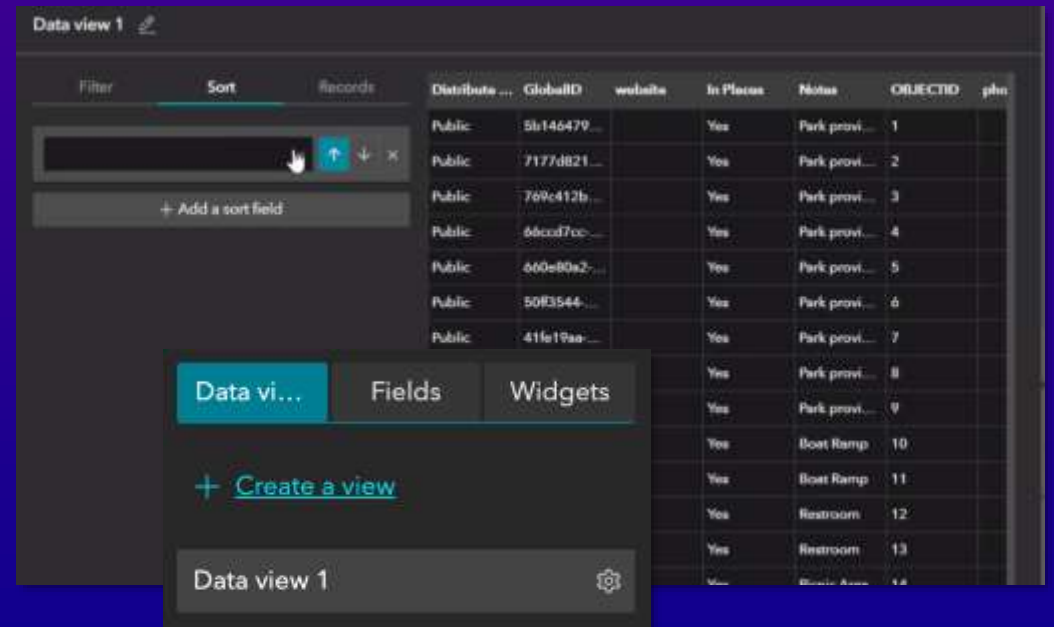
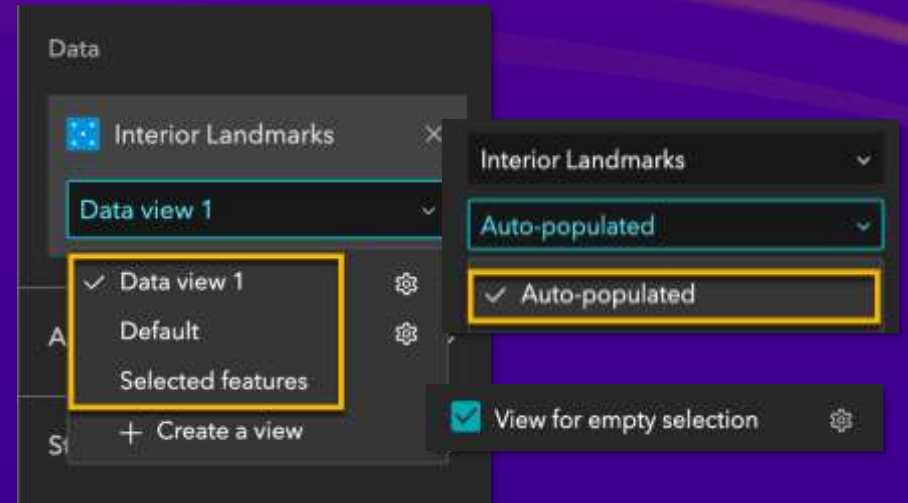
Data Source

- Manage and share data at the app (framework) level
 - Hosted feature layers
 - Feature & map services
 - Feature collections
 - Scene layers
- Show connections between Map, Layer, Field, Widget



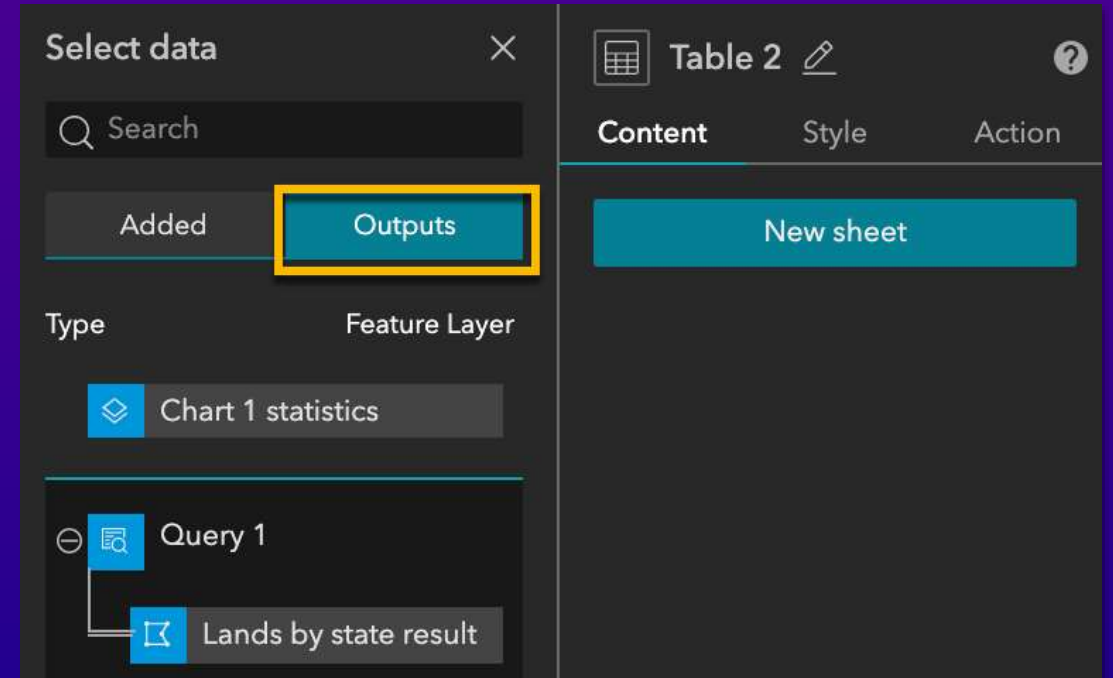
Data Source Views

- Default view
- Selected features' view
 - Use **View for empty selection** to choose the default feature
- Auto-populated view
- Data view



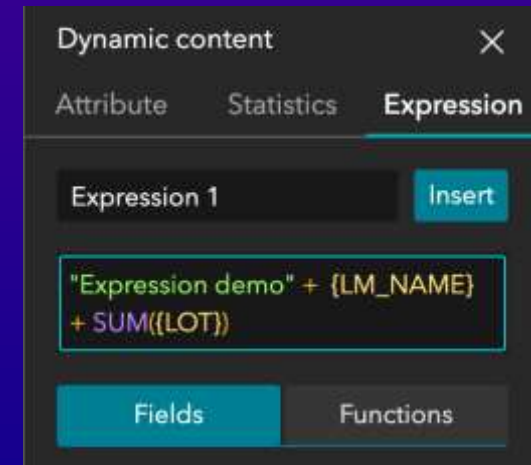
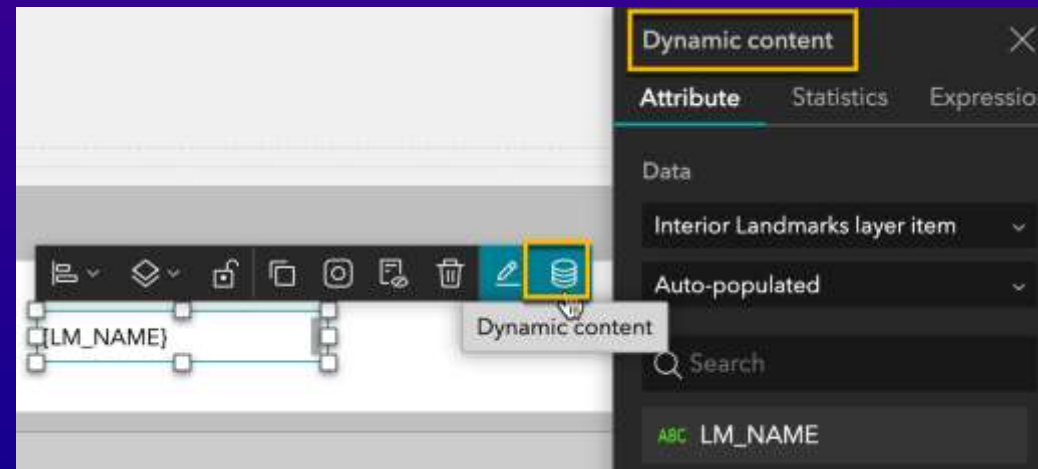
Output Data Source

- Generated by widgets at runtime
 - Chart, Query, Directions, Elevation Profile
- Other widget's data source
 - such as Table and Text



Dynamic Content

- Dynamically display attribute values, statistics or expressions
 - In Image, Text, Button, List, Card, and Embed
 - Must connect to data



Theme

Building block



Theme

- Defines color and font
- Customized options
 - Color
 - Font style
 - Font size

Default

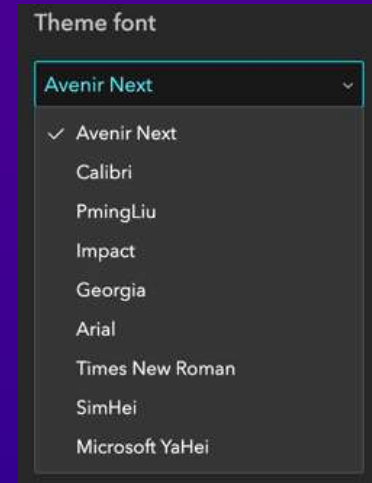
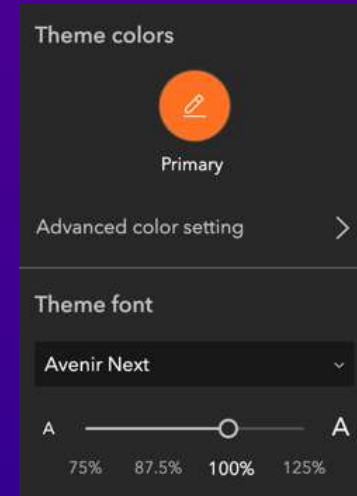
Dark

Vivid

Ink

Mysterious

Shared

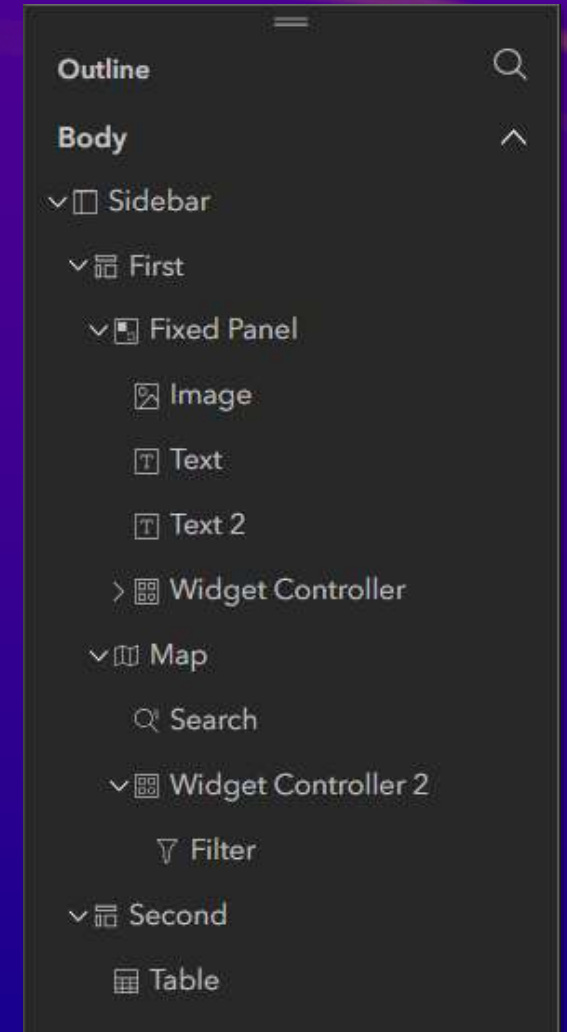
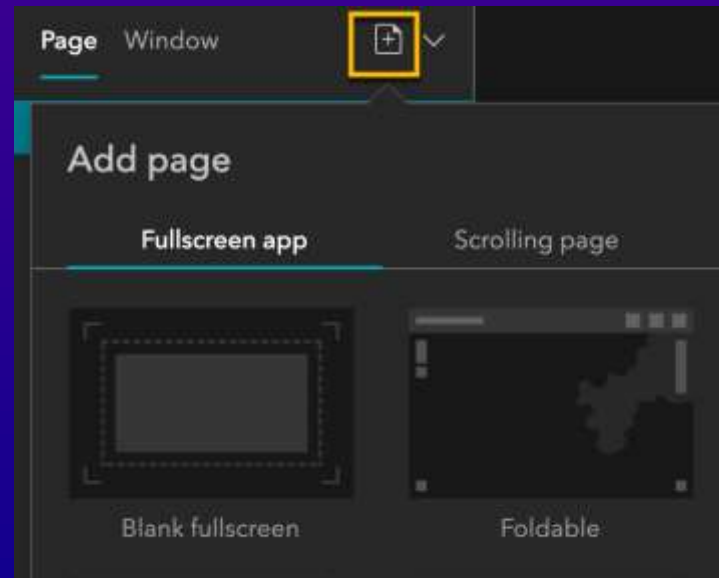


Page, Window, Screen Group

Building block

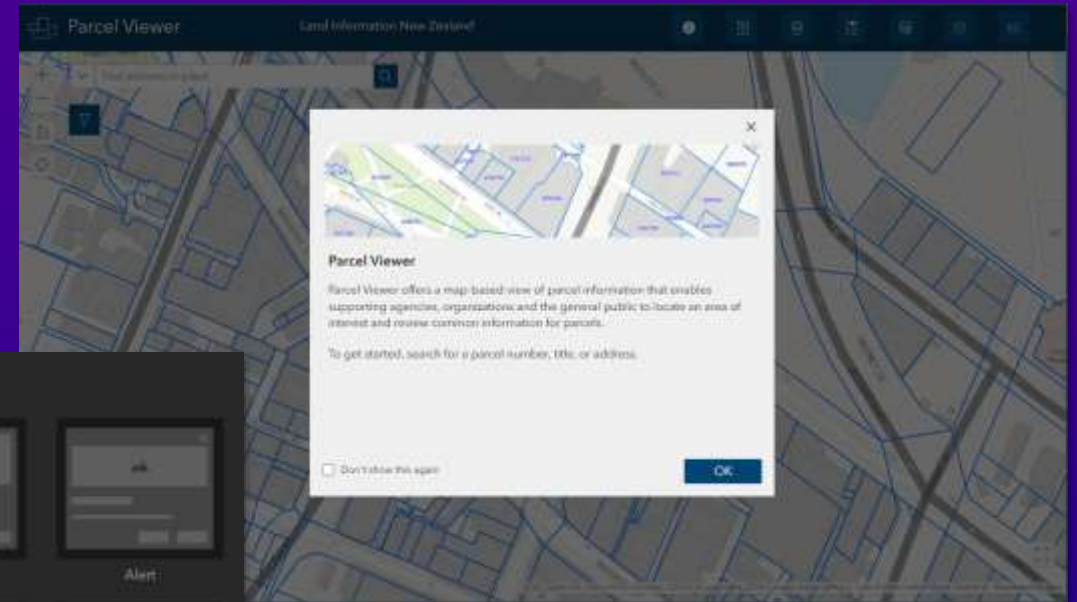
Page

- Header, Footer, Open with window
- **Outline** helps navigate widgets on the page
- Page templates



Window

- Display Splash screens or information
- Fixed mode
 - shown in a fixed position like a splash screen
- Anchored mode
 - shown around the widget that triggers it
- Window templates



Screen Group

A special layout with multiple scrolling screens

Engaging
Experience



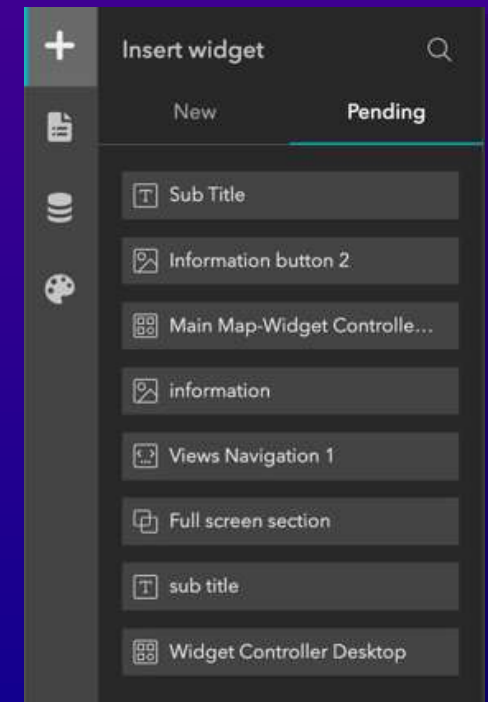
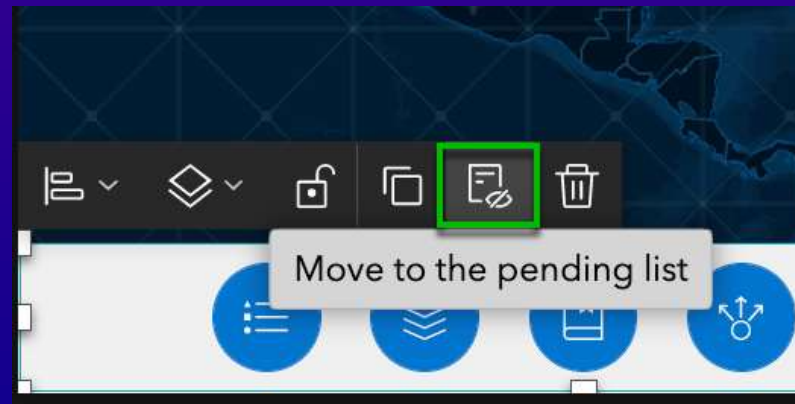
Mobile Optimization

- Configure apps on Mobile, Tablet, and Desktop differently with **one URL**



Keys for Mobile Optimization

- Auto vs Custom mode
- Changing position, size, and style of widgets won't affect other screen sizes
- Changing content of widgets or removing widgets affects other screen sizes
 - Move to the **pending list**



Integration with ArcGIS Apps

- Survey widget (ArcGIS Survey123)
- Business Analyst widget
- Floor Filter widget (ArcGIS Indoors)
- App URL parameter (ArcGIS Dashboards)



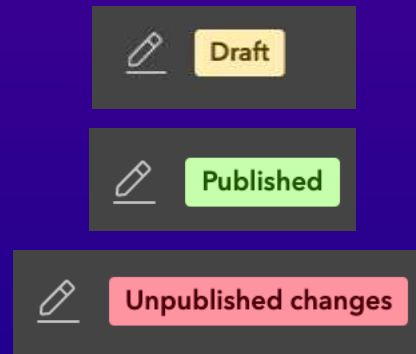
Publish Apps

The background features a dark purple gradient. On the right side, there are several thick, wavy, glowing lines in shades of blue, purple, and orange, creating a sense of motion and depth. In the lower right, a faint, stylized globe is visible, showing continents and a grid of latitude and longitude lines.

Publish Apps

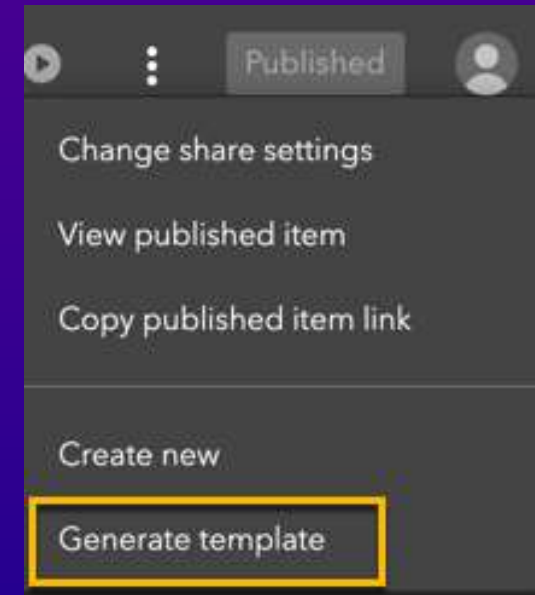
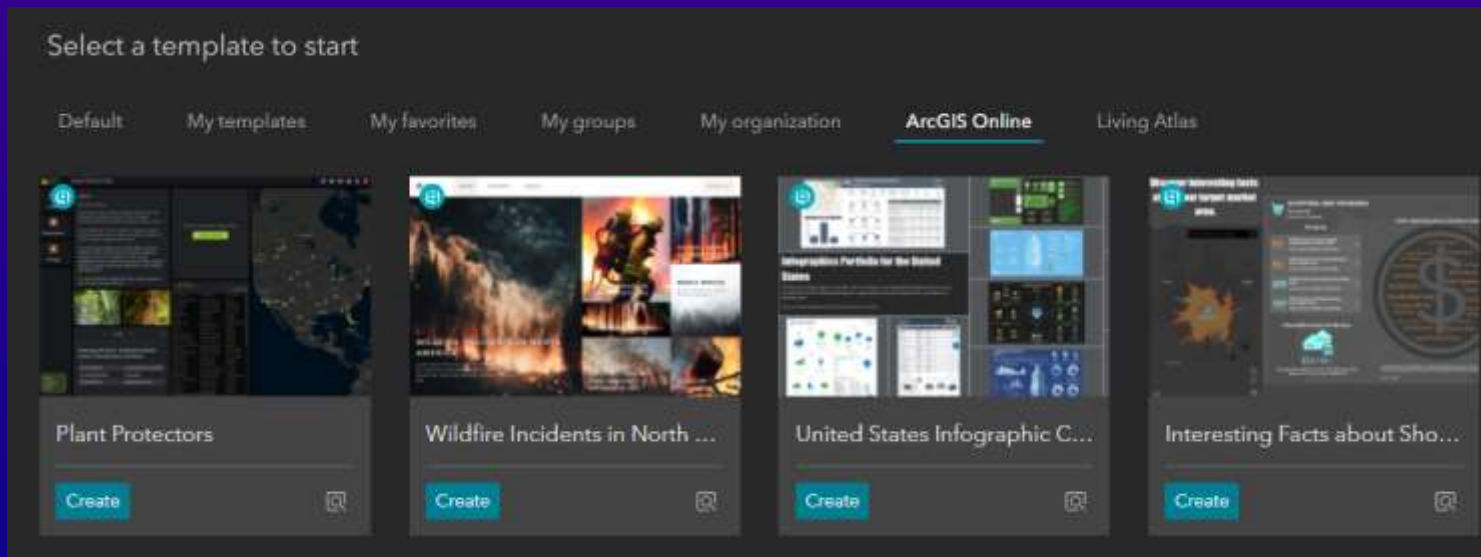


Draft
Published
Unpublished changes



Generate templates

- Create your own starters for reuse and branding
- Share with others



The background features a dark purple gradient with several glowing, multi-colored light trails in shades of blue, orange, and purple that curve across the right side. A faint, semi-transparent map of Europe is visible in the lower-left quadrant.

What's New & Roadmap

New in 2023

Enhancements

Slice



Elevation Profile



Web Scenes sync up



3D

New widgets

Add Data



Swipe



Near Me (beta)



Basemap Gallery

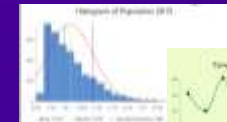


Accessible Apps

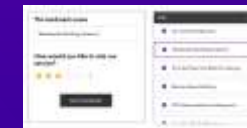
Enhancements



Business Analyst



Charts



Survey



Elevation Profile



Widget Controller

Roadmap

Q4 2023

- Analysis widget
(Geoprocessing & Analysis)
- Extent Navigate tool
- Related table editing

Q1 2024

- Select widget
- App URL parameters
- Mobile-first design

Q2 2024

- Group Filter
- Image Measurement widget
- Reporting
- Batch attribute editing

Experience Builder Gallery

<https://doc.arcgis.com/en/experience-builder/gallery/>



Silverwood Park Natural History Tour

Take a virtual Natural History tour through Silverwood Park in St. Anthony, MN. This narrated tour explores the park's wildlife, topography, and history.



Find a Collaborative

Discovery tool for the Collaborative Conservation Mapping Project to inventory and map collaborative groups working on conservation and resource management in the Southwest and Rocky Mountain regions.



Indicators of Planet Earth

This user friendly portal/gateway is bundled with multi Earth observations in which the visualizations are categorized in form of Earth Indicators, Natural Hazards, Environmental Threats, Ecosystem Health and Monitoring Climate.



Southeast AK Herring Surveys 2021

Alaska Department of Fish and Game (ADF&G) assesses the abundance of herring stocks annually using a variety of methods including aerial surveys.



Tucson's Climate Action Survey Results

This application displays the results of the Tucson's Climate Action survey in both spatial and graphical forms, pushing the limits of Experience Builder's capabilities.



CDC Places

This application provides an interactive map for model-based chronic disease related estimates at county, place, census tract, and ZIP Code Tabulation Area (ZCTA) levels.



City of Boston Property Audit

This application is to visualize the inventory of all City-owned property in Boston, as well as identify all vacant or underutilized property.

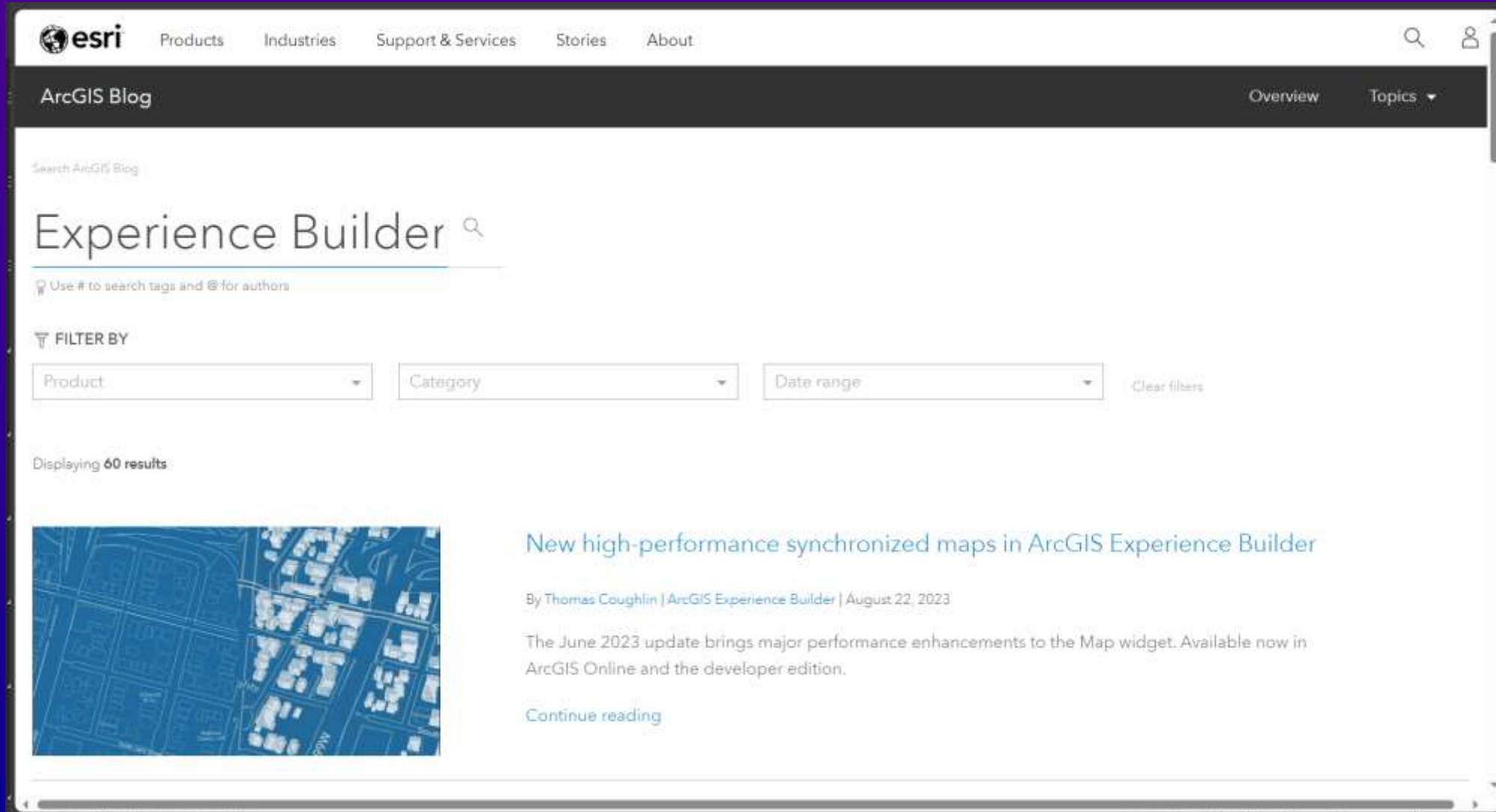


Is My River Fit to Play in?

The Rivers Trust has released this interactive map which aims to help shed the light on the reality of sewage pollution and allow river users to weigh up the risks before taking to the water.

Experience Builder Blog

[Search ArcGIS Blogs \(esri.com\)](#)



The screenshot shows the ArcGIS Blog search results for the query "Experience Builder". The page features a navigation bar with the Esri logo and links for Products, Industries, Support & Services, Stories, and About. Below the navigation bar, the search results are displayed. The search term "Experience Builder" is entered in the search bar, and the results show 60 items. The first result is a blog post titled "New high-performance synchronized maps in ArcGIS Experience Builder" by Thomas Coughlin, dated August 22, 2023. The post includes a blue-tinted image of a map and a "Continue reading" link.

esri Products Industries Support & Services Stories About

ArcGIS Blog Overview Topics

Search ArcGIS Blog


Experience Builder

Use # to search tags and @ for authors

FILTER BY

Product Category Date range Clear filters

Displaying 60 results



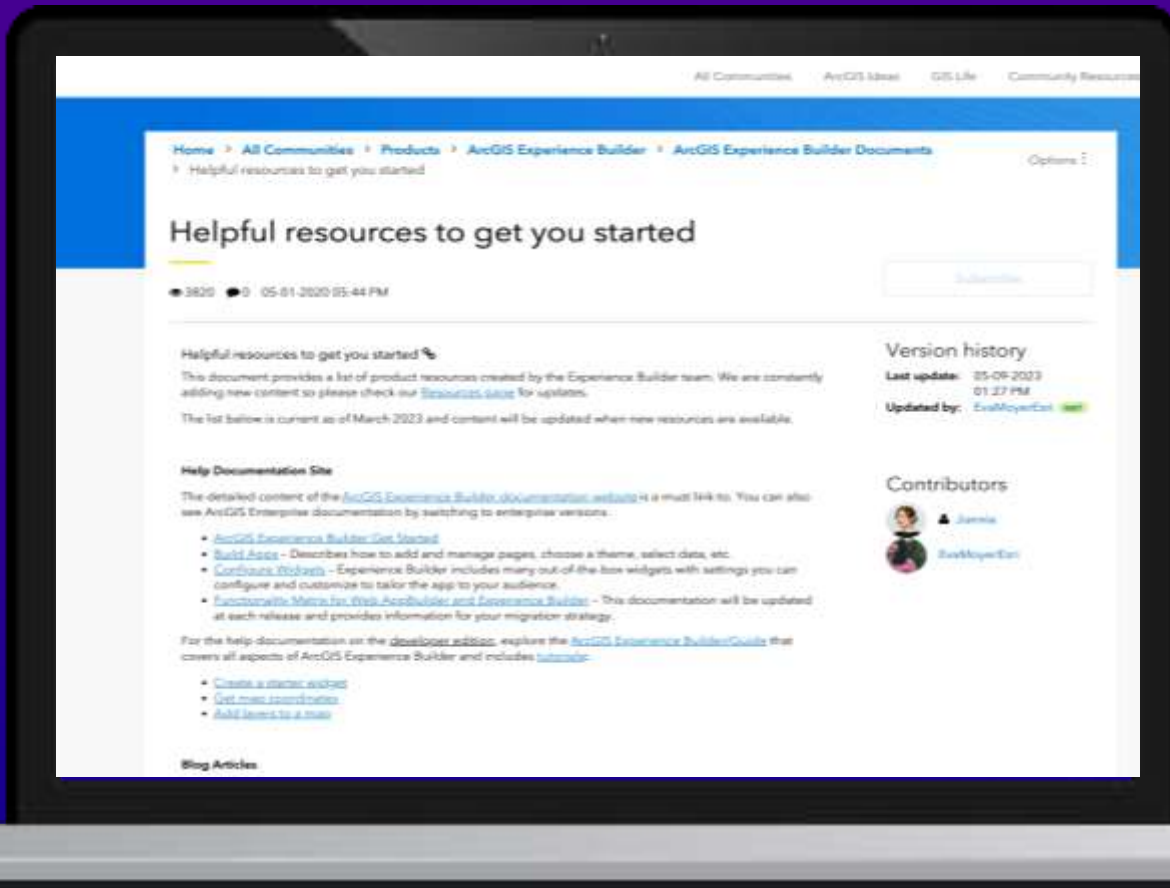
New high-performance synchronized maps in ArcGIS Experience Builder

By Thomas Coughlin | ArcGIS Experience Builder | August 22, 2023

The June 2023 update brings major performance enhancements to the Map widget. Available now in ArcGIS Online and the developer edition.

[Continue reading](#)

Helpful Resources on Esri Community



[Helpful resources to get you started - Esri Community](#)

It's great to be back at NY State GeoCon!
See you all at Fall NEARC in New Haven, CT?

Demo

Mark Scott, SE, Local Gov Team, msscott@esri.com

It's great to be back at NY State GeoCon!
See you all at Fall NEARC in New Haven, CT?

Q&A

Mark Scott, SE, Local Gov Team, msscott@esri.com



esri[®]

THE
SCIENCE
OF
WHERE[®]