



## NEWSLETTER

Want a voice in NYS GIS? Be a candidate for the Board of Directors!

Election on Oct 26th...

More info on Page 8

Volume 1, Issue 2

Summer 2009

### Inside this issue:

2009 Geospatial Summit	1
NYSGISA Update	1
Business Development	2
Conference	2
Education	3
Legislative	3
Membership	4
Marketing	4
Regional Coordination	5
Professional Certification	5
Spotlight	6
2009 NYSGISA Survey	7
EVENTS	8
AWARDS PROGRAM	8

### 2009 Geospatial Summit

The 4th New York State Geospatial Summit was held on May 20th at the historic Proctor's Theatre in Schenectady. A reception was held the evening before with a special presentation by Dr. David Miller recounting his expedition along the Missouri River in a sea Kayak following the journey of Lewis and Clark.

Attendance at the Summit exceeded all expectations! The event pulled 180 participants which was the second highest on record for the Summit. Given the dreary economy, it was a great testament to both the loyal attendees as well as all who helped to put this marvelous event together.

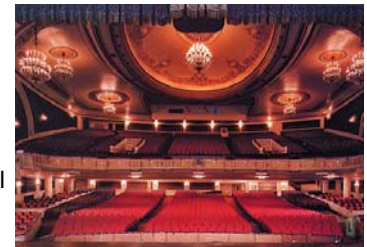
The roster of presenters included:

- **Anne Hale Miglarese** - *Booz Allen Hamilton*
- **Jim Geringer** - *Environmental Systems Research Institute*
- **Ronald Beck** - *U.S. Geological Survey*
- **Art Kalinski** - *Pictometry International*
- **Adam Szofran** - *Microsoft*
- **David Miller** - *Professor at SUNY Cortland*
- **Adena Schutzberg** - *Directions Magazine*

The topics of discussion ranged from initiatives of the National States Geographic Information Council, need for practical solution-based justification for GIT investment,

new directions of the USGS to innovative application of the technology for military and gaming. In addition, moderation and broader insight were provided by Adena Schutzberg, returning for her fourth time to the Summit.

In the morning and afternoon the presenters fielded questions from the audience during panel sessions.



### NYSGISA Update

by Jeff Volpe, NYSGISA President

Over the past six months the New York State GIS Association has been extremely busy working on a number of initiatives and outreach within the New York State GIS community and profession. I wanted to take this opportunity to update all of our members on the plans we have to move NYSGISA forward in the coming months. Some of our plans include:

- Offering Professional Development Hours (PDHs)-based GIS

training for the Professional Engineers within New York State.

- Continuing to monitor, track and analyze any and all proposed legislation which may impact the GIS community. Will reach to NYSAPLS to offer proposed amendments to existing NYSAPLS Survey Legislation.

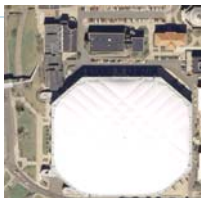
- GISP Accreditation within New

(Continued on Page 7)

## Association Background

The NYS GIS Association is a growing non-profit organization for New York professionals involved in GIS, Global Positioning Systems (GPS), land information systems (LIS), remote automated mapping and related geospatial technologies.

The organization is designed for those involved in the GIS community to exchange knowledge and ideas regarding important topics facing the industry in the coming years. The NYSGISA promotes a forum for open discussion regarding the direction of the GIS profession.



### WHERE IS IT?!

Answer in the next NYSGISA Newsletter...

*Previous Issue:*  
Fort Drum Army Base

## Business Development

The Committee has been busy the past few months exploring ways to contact the 700+ GIT businesses in New York State.

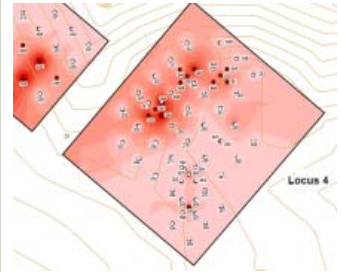
In tandem are continuing efforts to draft a survey for gauging practical needs and perspectives of the industry for the private sector.



### GIT In Action

Hartgen Archaeological Associates, Inc., based in Rensselaer, has integrated GIS and GPS into all aspects of work — from project preparation and subsequent field investigation to lab analysis and final reports. Modeling a project area helps the staff delineate where to focus resources to maximize chances of site recovery.

More information about this company can be found at: <http://www.hartgen.com/services/cadgis.aspx>



### Scott Sherwood

- Girk Cakmak
- Garvis L. DiLauro
- Austin Fisher
- Verne LaClaire
- John Trimber

## Conference

The Conference Committee has been very active in 2009, meeting several times with ESF to establish a partnership together for improving the overall quality of the NYS GIS Conference.

A Memorandum of Agreement has been drafted and now in review by ESF and the NYSGISA Board of Directors. Some key elements of this document are:

- A plenary session for the annual NYSGISA meeting with a non-conflicting time slot prior to the 1st Day reception
- Cost and profit sharing with ESF

- NYSGISA inclusion on the Conference Planning Committee
- Co-recognition of joint sponsorship on all conference materials

The 2009 **NYS GIS Conference** will be held in Lake Placid at the Crowne Plaza in October 25-27 (Sunday—Tuesday). More information can be found on the SUNY ESF website at [www.esf.edu/nysgisconf/](http://www.esf.edu/nysgisconf/).



### Jeff Volpe

- Heather Baker
- Bob Brower
- Ann Deakin
- Paul DeFrancisco
- Mickey Dietrich
- Anyee Fields
- Mike Fitzgerald
- Christa Hay
- Joe Jones
- Bruce Oswald
- Deb Owens
- Steve Polzella
- Tom Sears
- Tao Tang
- Josh Williams

### Education

The NYSGISA again cosponsored the premier statewide Educators workshop "Teaching with Spatial Technology" (TwiST), held with the Institute for the Application of Geospatial Technology (IAGT) in Auburn NY. The 4-day conference held at the end of June was attended by 26 teachers and students from throughout New York, with attendees this year also from Massachusetts.

The workshop focused on the use of geospatial technology in traditional and non-traditional classrooms as a tool that enriches the experience of the student. A GIS summer camp was again included this year, but there were no student applicants eligible to receive the NYSGISA scholarship to attend. The non-residential nature of the camp makes participation from throughout the state difficult. Efforts are underway to incorporate a residential option for next year.

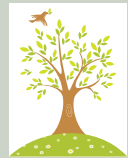
More information can be found at <http://www.iagt.org/twist/09/>.



**Bob Brower**  
Eileen Allen  
Scott Anderson  
Alex Chaucer  
Laurie Smith

### GIT In Action

A City of Glens Falls High School Biology class recently completed a full inventory of trees, including attributes for DBH, species, and general health using ArcView. This data set will be posted on the City's ArcGIS Server website as an aid for the City Tree Commission, and also provided as a KML for students and residents to use within Google Earth.



More information on the City Tree Commission and the inventory project can be provided by contacting:

[JBrechko@gfsd.org](mailto:JBrechko@gfsd.org)

### Legislative

Once again the New York State surveying community has reintroduced legislation (**Bill S01776**) to modify the existing surveying law in the state. The NYSGISA has reached out to the NYS Society of Professional Engineers for collaborative efforts to modify the submitted bills. Letters were sent to the NYS Senate and Assembly expressing the Associations concerns.

Specifically, as was the case last year, the NYS-GISA advocates complete adherence to the Model Law and Model Rules defined by the National Council of Examiners for Engineering and Sur-

veying (NCEES).

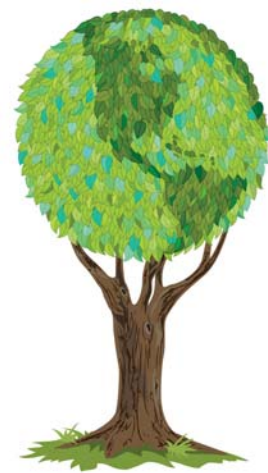
Copies of these correspondence can be viewed on the Association's website, as well as templates for letters to legislators.

If you would like to view the legislation the link is provided below to the right:

<http://assembly.state.ny.us/leg/?bn=S01776>



**Sam Wear**  
Jason Baum  
Girk Cakmak  
Michael Crino  
Clare Dunn  
Anyee Fields  
Christa Hay  
Susan Knauss  
Theresa Pardo  
Paul Rooney



**GEOGRAPHY**

If I could travel around  
the world  
Great wonders I would  
see,  
And then I'd really  
understand  
The need for  
Geography.  
The maps and charts  
upon my desk  
Instead of wondering  
where?  
I'd know because of  
course you see  
I had recently just been  
there.  
The wonders of America  
Are such great sights to  
see.  
Grand Canyon and the  
Hoover Dam  
Locked in my memory.  
The pyramids, the  
flowing Nile  
In Egypt's desert land,  
Where long ago the  
pharaohs reigned  
And played upon the  
sand.  
The river Seine, the  
Eiffel tower  
The city of romance,  
Just cross the English  
Channel  
To our neighbour sunny  
France.  
Icebergs, hot springs  
and geysers  
I'll never understand  
How all can be together  
In the beauty of  
Iceland.  
But till my journey  
starts  
And my wishes can  
come true  
Back to my maps and  
contour lines  
My homework's  
overdue.

**Jessica  
Liverpool College**

[http://www.sln.org.uk/  
geography/pop/  
General/other%  
20poems.htm](http://www.sln.org.uk/geography/pop/General/other%20poems.htm)

**Membership**

The Membership Committee has been busy the past six months cleaning up and enhancing the master membership database and participating in area events to promote the Association (e.g., Adirondack Local Government Day).

In addition to these activities, the Committee has also prepared this second issue of the NYS-GISA Newsletter. This resource compliments the Association's website and monthly News Blips on the NYS GIS List Serve.

Individuals can regis-

tered as either a Professional (\$10) or Student (\$5). You can join using the Association website (<http://www.nysgis.org/aspcode/register.asp>) or by requesting a form from the Committee or Association Secretary.

A special benefit extended to anyone who attended the 2009 Geospatial Summit is complimentary membership for this year (or credit for 2010 if dues have already been paid).

Benefits of joining can be found on Page 5.



**Sheri Norton**  
Katherine Barnes  
Clare Dunn  
Christa Hay  
Razy Kased  
Deborah Parker  
Carol Zollweg

**Marketing**

Subsequent to completing work on the 2009 Survey and the GeoSpatial Summit, the Membership Committee has turned its attention to defining a scope of work for revamping the NYS-GISA website later this year. The Board of Directors (BOD) plans to make this valuable resource easier to navigate for users and more flexible to provide remote administrative access for more timely updates.

Currently, the web site is in the process of being moved and you will be notified of its new address in the near future. The BOD wishes to thank the IAGT for hosting the site for many years and

providing staff resources to update it on a regular basis.

Another major initiative the Committee is announcing in this newsletter is the Association's new award program (see Page 8). This program is being implemented to help foster a stronger community within the GIS profession in New York State and, at the same time, recognize the wide range of domain and service areas in which GIS professionals provide valuable contributions. It will also support the Association's continued emphasis on professional certification and re-certification as a basic tenet of our profes-

sion. This program is intended to provide members of the association with additional recognition that may be used to support documentation of ongoing contribution to the profession as part of the requirements for certification and/or re-certification. Details on the program will be forthcoming shortly.



**Bruce Oswald**  
Lisa Andrews  
Ben Houston  
Jake Needle  
Julie Tolar



## Regional Coordination

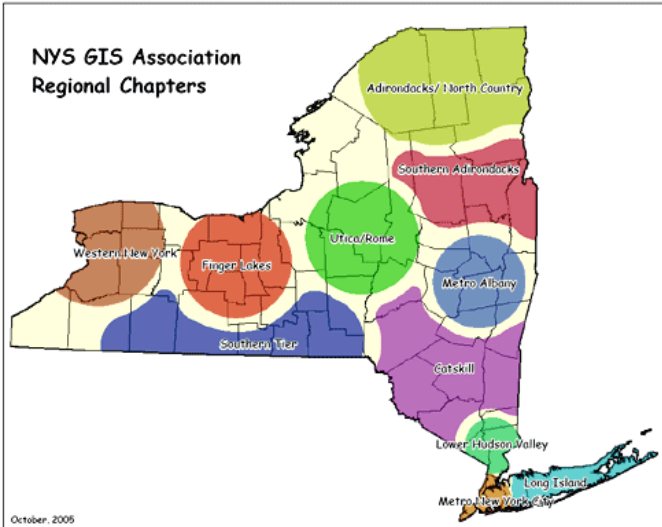
The Regional Coordination Committee welcomes two new regional user groups:

**Tug Hill / Western Adirondacks** — coordinated by Mickey Dietrich

**Metro New York City** — coordinated by Ken Reid

The Committee hopes it can serve as a "nexus" for trading thoughts and coordinating programs (e.g., GISP workshops).

More information on upcoming meetings can be found on the Association website.



Larry Alber  
Sheri Norton

### Why Join?

- Become a part of New York's only statewide professional GIS association.
- Keep abreast of the latest GIS events.
- Network with other geospatial professionals.
- Promote professionalism and certification within the GIS community.
- Expand the use of GIS in other professions.
- Impact legislation and other issues affecting GIS in New York State.

## Professional Certification

Professional certification is one of the primary ways that we can advance our industry and develop a strong core of qualified individuals across the broad domain of applications that encompasses GIS. Described below are two options for consideration:

**GISP** — This certification began in 2004 by the GISP Certification Institute. In New York State there are now 104 individuals holding earning GISP as of May 2009, up from 24 in 2008. Evaluation includes experience, education, and professional contributions. If you would like more information we recommend contacting one of the existing GISPs in the state for advice. Application materials and additional details can be found at the GISCI website: [www.gisci.org](http://www.gisci.org).

**ASPRS Certification** — The American Society of Photogrammetry and Remote Sensing offers this more rigorous certification at multiple levels (Scientist, Technologist) and domains (Photogrammetry, Remote Sensing, GIS/LIS). Once your application is accepted you are eligible to take the certification exam. The Technologist series is particularly valuable for students and recent graduates who have not accumulated enough experience and contribution for GISP. For more information, please check out the ASPRS website at [www.asprs.org/membership/certification](http://www.asprs.org/membership/certification).



Side Note: The *URISA 2006/2007 Salary Survey for IT/GIS Professionals* finds an **\$8,500 difference** between average salaries for GISPs and non-GISPs.

**SPOTLIGHT:****New York State Users' Experience with the 2008 LUCA Program**

The Local Update of Census Addresses Program (LUCA) is a census partnership program that is conducted in sequence with the decennial census. The Census Bureau works with local entities to develop a Master Address File (MAF) to be used for the upcoming Census. The 2010 Census is less than a year away, and the involvement of each of our municipalities is vital to ensuring the correct addresses are included in the Master Address File.

As municipalities began to prepare for the LUCA program in early 2008 they were faced with several issues as stated by the LUCA program participants. This article serves to present some of the experiences of the LUCA program participants in New York State. A request for responses was made through the NYS GIS Email Listserv and we have compiled those responses and summarized their responses. The data sample used for this article was dependent on users responses received and figures related to number of participants, methods used and other information are not available at this time.

Users discussed issues concerning the dates and deadlines that were set for the LUCA program and the delays that were associated with receiving materials to conduct the LUCA program and at the same time not having extensions for the deadlines as needed. Several other concerns discussed the overlapping boundary and road lines that were not at times represented accurately. Furthermore, a few participants noted that some of the addresses were out-dated or misrepresented geographically and had to take the necessary steps to adjust which in turn added to their processing time and causing a "crunch" with regards to submission deadlines.

Users also discussed to benefit of having attended the LUCA program training workshops as it provided background for using the various methods of conducting the LUCA program. Also, several participants were pleased with the easily navigated Census mapping program and seamless straight forwardness of making adjustments and updates, however a few participants did mention the difficulties making some corrections to line files.

Overall, the participants felt that the LUCA program was useful in updating the Master Address File and that is a vital tool for local knowledge to be included, as well as the proper resources that Census

provided for each participant. At the time, several participants hoped to have a more efficient method of receiving materials in a timely manner and/or making the necessary adjustments to accommodate deadlines as needed. Furthermore, the necessity of providing accurate data points, lines and other spatial references is a vital component for users to be able to decipher and disseminate spatial data and attribute data properly.

We hope at the NYSGISA that this article will shed some light on the LUCA program participation and provide good feedback to strengthen future projects with the NYS community and Census.

*Submitted by Razy Kased  
(Membership Committee)*

**Why Does the Census Matter?!**

- **Census affects funding in your community**  
Census data directly affect how more than \$300 billion per year in federal and state funding is allocated to communities for neighborhood improvements, public health, education, transportation and much more. That's more than \$3 trillion over a 10-year period.
- **Census affects your voice in Congress**  
Mandated by the U.S. Constitution, the census is also used to apportion seats in the U.S. House of Representatives and redistrict state legislatures.
- **Census affects your representation in state and local government**  
Census data are used to define legislature districts, school district assignment areas and other important functional areas of government.
- **Census informs your community's decisions**  
The census is like a snapshot that helps define who we are as a nation. Data about changes in your community are crucial to many planning decisions, such as where to provide services for the elderly, where to build new roads and schools, or where to locate job training centers.

[www.prcdc.org/files/Foundation%20Guide%20to%20the%202010%20Census.doc](http://www.prcdc.org/files/Foundation%20Guide%20to%20the%202010%20Census.doc)

## NYS GIS Association Activities

(Continued from Page 1)

York State. To date only four States (Ohio, Oregon, Montana and California) have done this.

- Regional training opportunities. NYSGISA is looking at establishing a series of regional and web-based training classes.
- Website update and improvements. NYSGISA is moving forward with an RFP to update and enhance our existing website. The new website should offer several advantages to our membership and sponsors.
- GISP Certification. NYSGISA will continue to promote GISP certification by awarding GIS professionals with GISP certification stimulus at this year's NYS GIS Conference in Lake Placid.

Please feel free to visit our website ([www.nysgis.org](http://www.nysgis.org)) for more information on NYSGISA or contact me directly at [jvolpe@bergmannpc.com](mailto:jvolpe@bergmannpc.com) with any questions, issues or ideas on how NYSGISA can assist with promoting and educating GIS technology within the State of New York.

## 2009 Association Survey Submitted by Clare Dunn (Marketing Committee)

In April 2009, the NYS GIS Association conducted a survey of the geospatial community in New York State. The purpose of the report was to evaluate current trends in professional certification and to determine what the geospatial community would like to see from the NYS GIS Association in the coming year.

Over the course of 14 days, we received 133 responses across the State (from Long Island & NYC to St. Lawrence County to Buffalo) which provided extremely valuable information on certification as well as what the community felt the future direction of the Association should be.

On first blush, the number of folks that have GIS certifications seems low (16), however, the number of individuals considering certification over the next five years is significant (24% yes & 41% maybe). As one of the primary goals of the Association is to support the development of the GIS profession throughout the state, the barriers to certification as outlined by the responders will be examined closely to see what role the Association can play in encouraging these individuals to moving forward with obtaining certification.

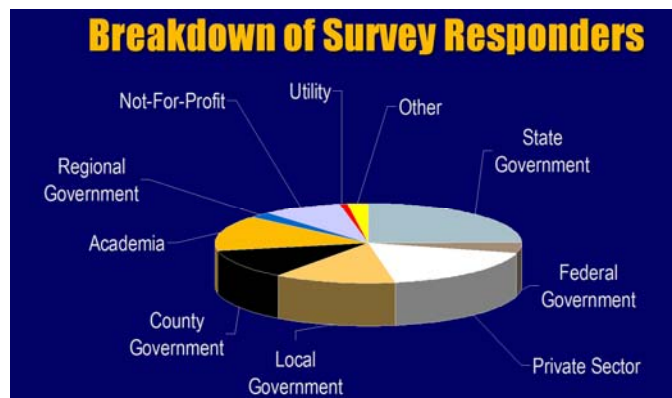
The survey indicated that the top four items that the Association should be stressing are:

- Informing members of and impacting issues such as the proposed Surveying Legislation

- Providing geospatial training opportunities
- Continuing to co-sponsor the Geospatial Summit
- Assisting to improve the NYS GIS Conference

While the Association believes that it is currently focused in these areas, it will continue to monitor the geospatial community on a regular basis to insure that it is doing everything possible to meet its needs.

Lastly, the Association wishes to thank all those that took the time to complete the survey and let us know that we can do to make it more responsive to your needs.



## BOARD OF DIRECTORS

**Jeffrey Volpe**

(President)

**Bob Brower**

(Vice-President)

**Christa Hay**

(Treasurer)

**Sheri Norton**

(Secretary)

**Bruce Oswald**

(Director)

**Scott Sherwood**

(Director)

**Sam Wear**

(Director)

If you have ideas for Newsletter content or would like to submit an article for inclusion, feel free to contact Sheri Norton at [nortons@co.warren.ny.us](mailto:nortons@co.warren.ny.us)

## EVENTS

### ANNUAL BOARD ELECTION!

The annual election for the NYS-GISA Board of Directors will occur at the Annual meeting on October 26th at the NYS GIS Conference in Lake Placid. We hope you will consider running for a 2-year term on the Board of Directors (there are three vacancies).

If you are interested, please submit a written statement of your interest to the NYSGISA Nominating Committee by **12 noon on Monday, Sept. 28<sup>th</sup>** c/o Sheri Norton (518-761-6411 by fax or to [nortons@co.warren.ny.us](mailto:nortons@co.warren.ny.us) by email).

### REGIONAL GIS USER GROUPS:

**Lower Adirondack:** September 9, Washington County Muni Center

December 3, Warren Co Muni Center

**GISSIG:** September 16

**Western New York:** September 17

### OTHER EVENTS:

#### NEARC 2009 Annual Conference

October 4-7, 2009

Nashua, NH

#### NYS GIS Conference and Annual NYSGISA Meeting/Election

October 25-27, 2009

Lake Placid, NY

#### Saratoga County Planning and Zoning Conference

January 25, 2010

Saratoga Springs, NY

#### American Planning Association Annual Conference

April 10-13, 2010

New Orleans, LA

## AWARDS PROGRAM

The NYSGIS Association is proud to announce a new Awards Program as a way to recognize the ongoing contributions and commitment of GIS professionals around the state. The intent of the program is to foster recognition within the community of GIS professionals in New York State as well as to emphasize professional certification and re-certification as a basic tenet of our profession.

### Award Categories

#### Outstanding Contributions to the Profession

Awards will be given to up to five people in recognition of their outstanding contribution to GIS in New York State. Contributions can include the implementation of GIS technology, conducting innovative research, providing exemplary service, or advancing GIS technology through strong advocacy, management, and leadership. Nominations will require a brief written justification as to the nature of the contribution.

Award winners will receive a certificate for two credit points toward the "Contributions to the Profession" requirement for certification or re-certification as a GIS Professional (GISP). Awardees will also be recognized at the Association's plenary session at the Annual NYS GIS Conference, and receive a free one year membership to the NYSGIS Association.

#### Lifetime Achievement Award

The Association will accept nominations for a Lifetime Achievement Award, which is intended to recognize the longstanding contributions of members of the GIS profession who have had a significant impact on both the Association and the profession in New York State over the course of their careers and who deserve special and separate recognition by the Association.

Check out the application guidelines and procedures at [www.nysgis.org/documents/awards.pdf](http://www.nysgis.org/documents/awards.pdf) for more info.