



October 28-30, 2015

Eric A. Herman, GISP

2015 Advisory Council Chair

(...and GIS Program Manager, NY State Thruway Authority)



The NY State Geospatial Advisory Council

Mission:

***Advise the State on effective
use of geospatial technology
resulting in tangible benefits
to NYS***



Representatives from Industry Sectors

- By design, 75% of the Council does not work for NY State
- Input from local governments, private sector, academia, feds and non-profits is used to guide state projects

~Mechanism by which YOU (the GIS community), can provide ideas and feedback on state programs~



Know Your Representatives



Local Gov: *Sheri Norton, Laura Feitner Calarco, Jim Daly, Glen Cutter, Michael Ross
Jeffrey Quackenbush, Matthew Owen*

NYC: *Colin Reilly*

State Gov: *William Johnson, Frank Winters, Eric Herman, Jeff Herter, Todd Nelson*

Federal Gov: *Douglas Freehafer*

Academia: *Ann Deakin, Alex Chaucer*

Private Sect: *Austin Fisher, David Jorgensen*

Non-Profit: *Craig Cheeseman, Matthew Knutzen*

NYSGISA: *Julie Tolar*



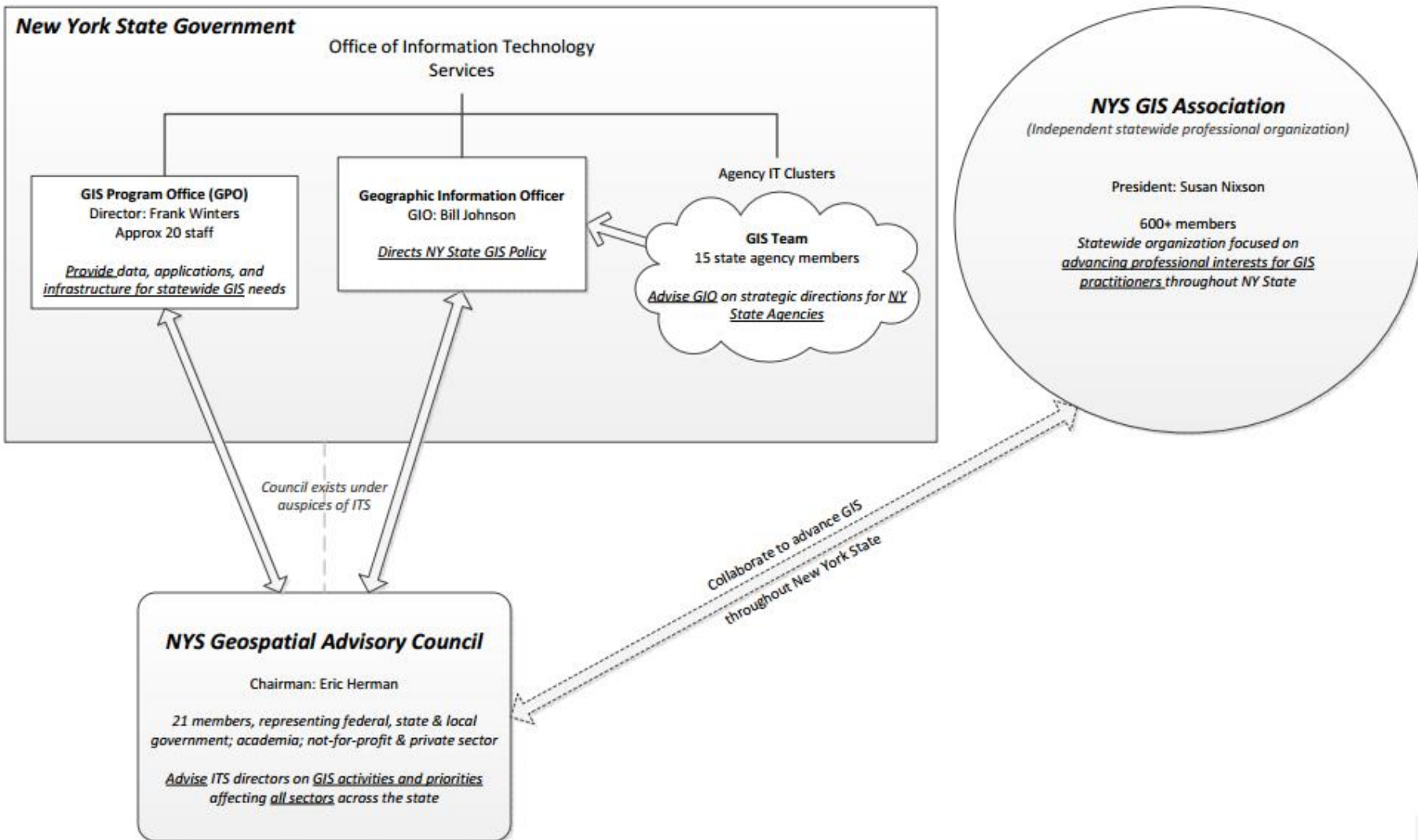
How it Works...

- The Council operates under the auspices of the NYS Office of Information Technology Services
- Provides advice to the state Geographic Information Officer, and the GIS Program Office, to provide external input into state-run programs



GIS Coordination in NY State

August 28, 2015



Examples of Past Council Topics

- Establishment of the NYS GIS Clearinghouse
- Ensuring the state's orthoimagery and elevation programs are aligned with local needs
- Providing advice and input on the structure of the statewide streets file and address databases
- Looking at state contracting and purchasing rules to make GIS procurements easier
- Aggregation of county parcels statewide



Some Current Discussion Topics

- ShareGIS: Assuring infrastructure to provide GIS web services to local communities & businesses
 - Leveraging high-level attention for NY-Responds
 - Reduction of redundant data storage & services
- Data Sharing
 - Evolution of the Cooperative in our Open Data world
 - Encouraging open sharing of parcel data



Learn More and Contribute

Stay informed
with minutes
and info on the
Clearinghouse

<http://gis.ny.gov>

The screenshot shows the NYSGIS Clearinghouse website. At the top, the title 'NYSGIS Clearinghouse' is displayed in large blue and red letters. Below the title is a navigation bar with several menu items: 'NYS ITS', 'GIS DATA', 'COORDINATION PROGRAM' (circled in red), 'ORTHOIMAGERY', and 'DATA SHARING COOPERATIVE'. Below the navigation bar, there is a section titled 'GIS IN THE NEWS:' followed by a link: 'CoreLogic... nics Natural Catastrophe Risk Management Solution with Addition of Probabilistic Flood Model'. Below this is a map of New York State with county boundaries. The text 'Click on county for more information' is overlaid on the map. To the right of the map is a 'WHAT'S NEW' section with several links: 'NY/NJ 3DEP Broad Agency Announcement Public Workshop - 6/19/15', '2014 Orthoimagery Available For Download', 'Online GIS Parcel Data Resources', 'NYS Elevation Data', 'GIS Help Desk', 'GIS Streets and Addresses', and 'NYS GIS Strategic Plan'. At the bottom of the page is a footer with several menu items: 'STREET ADDRESS MAPPING (SAM)', 'ELEVATION', 'RASTER MAPS', 'OUTREACH', 'GIS HELP DESK', and 'CUGIR'.

Share your thoughts:

- In person (*Plenty of us are right here!*)
- Member email links on website
- [Contact the Council](#) button



Questions?



Eric A. Herman, GISP
eric.herman@thruway.ny.gov

