

Westchester County GIS: 25 Years Later

Products and Services for Local Government

NYGeoCon 2013
Saratoga Springs, New York
November 13, 2013

Sam Wear
Assistant Chief Information Officer (GIS)
Westchester County GIS
White Plains, New York

Westchester County GIS

- Established 1986
- Created first comprehensive large scale (1"=100') countywide land base in 2000 (Spring 2013 update)
- GIS database & application development for government
 - Business, industry, school systems important constituents
- Environmental Systems Research Institute (ESRI) client
 - Support other industry geospatial software programs/viewers (Google Earth & AutoCAD)
- Itemized funding in both operating and capital budget
 - Additional financial support from other county program areas

Relevant Program Areas

- Stewardship of countywide base map
- Geospatial Data Warehouse
- Infrastructure/Asset Inventory
- Tax Maps/Parcel Information
- Land Use/Zoning/Planning
- Emergency Services (Fire & Police)
- Health & Human Services / Not-for-Profits
- Geospatial coordination with local governments

Old School GIS Coordination (1988-2003)

- Data centric with limited delivery system
 - Diskettes/CDs & hardcopy maps ruled
- Limited GIS data catalog – all levels
 - Lots of data development costs (remember digitizing?)
 - No countywide digital base map
 - Digital tax maps a mess
- Relied on desktop client software (ex. ArcView 3.2)
- Limited “community of users” (ex. Planning, Environmental & Natural Resources, limited engineering; focus on government systems)
- AutoCAD & GIS not integrated
- Field data collection options limited (yes, GPS)
- WWW established but limited GIS space and presence

New School GIS Coordination (2004 – 2013)

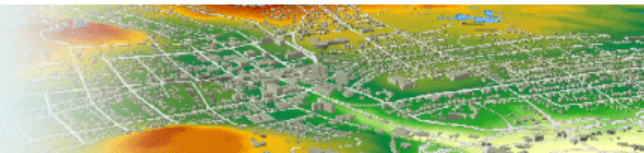
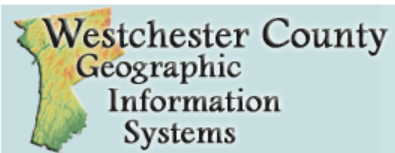
- Focus on server technology (map services)
 - *Phenomenally* more efficient in delivery of products and services
 - Client software only for power users
- Focus more on content vs. user interfaces & software platforms
- Leverage 3rd party apps such as Adobe (PDF rules – HUGE user community)
- Google greatly expands awareness & better AutoCAD integration
 - Engineering and utility communities important allies
- Expose map services to business and industry
- Significant increase in community of users
 - Geospatial component in all government systems
- Integration with mandated programs
- Smart phone playing field emerging/better understood
- The Cloud / Shared Services resonate amongst decision-makers

Core Business Areas

- Infrastructure Management
- Assessment & Land Records
- Inspections & Permit Processing
- Police & Fire Systems
- Environmental & Land Use Planning

Products and Services for Local Government

- Online mapping applications
 - *Mapping Westchester County*
 - *Tax Parcel Viewer*
- Map services
- Web feature editing and mobile data collection (ArcGIS.com)
- Packaged data bundles / Data warehouse
- Map books / PDF / hardcopy maps
- ArcReader & ArcGIS Explorer projects
- Technical Support / On-site consultation
- Communication & Outreach



Westchester County GIS

Westchester County Geographic Information Systems (GIS) develops, maintains and distributes digital data for Westchester County, New York. The program offers a wide range of online data as well as providing technical support to both local and county government agencies through highly trained and experienced staff.

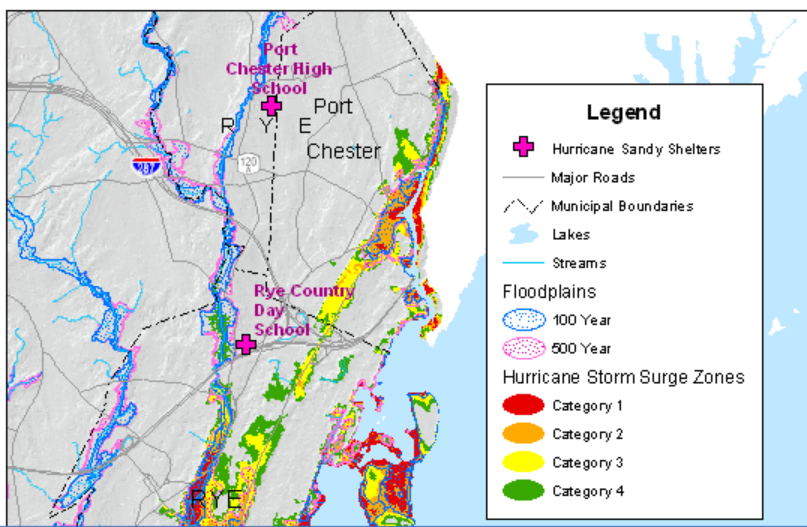
In 2000, Westchester County GIS led development of the first countywide digital base map which now provides the spatial foundation of the county's GIS program. Maintaining state-of-the-art computing and GIS facilities in White Plains, New York, Westchester County GIS staff utilizes the latest versions of the Environmental Systems Research Institute (ESRI) software for internet, desktop, and field applications, with Oracle as its database management system. The program supports systems integration with latest innovative technologies such as Google Earth, Virtual Earth, ArcExplorer, and GeoPDF.

Westchester County GIS continues to focus on applications in the areas of emergency response and public safety and health, infrastructure management, land use planning, transportation, natural resource management, and Green technologies.

Connect With Us



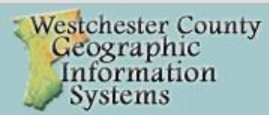
County GIS in Support of Hurricane Sandy's Relief Efforts



GIS Newsletter



Mapping Westchester County



Mapping Westchester County

[Help](#) | [Disclaimer](#)



Aerial Photos

1947 1960 1976 2004 2007 2009 Map

Search for a Location

Your search result

Thematic Map

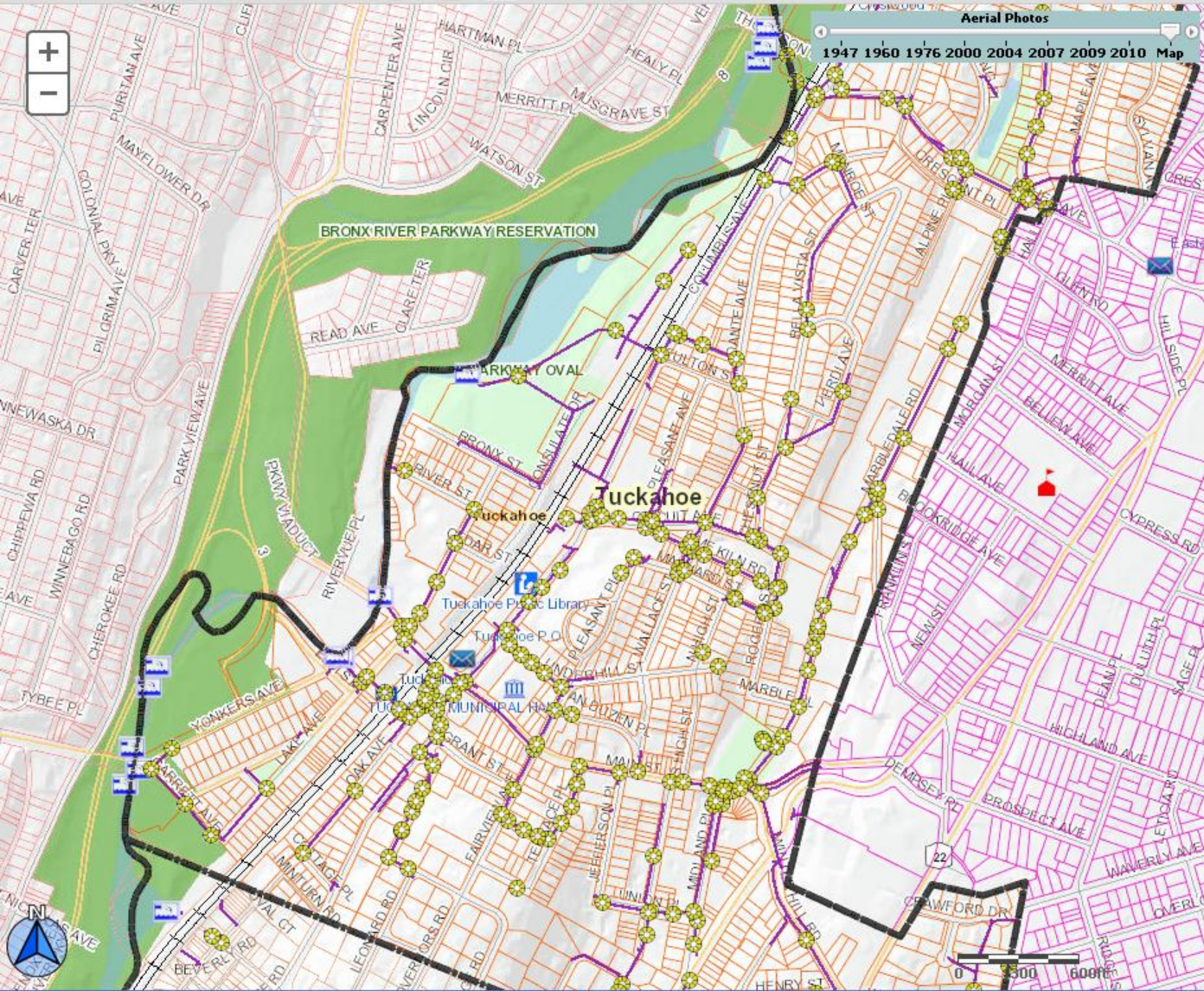
Show Additional Data on Map

- Environmental Features
- Facilities and Services
- District Boundaries
- Transportation
- Emergency Zones/Support
- 2010 Census
- 2000 Census
- Local Government
- Green Facilities and Services
- Raster Data

User Note: Some layers (land use, 2 foot contours, etc.) are not visible at all scales. Users will have to "zoom-in" to neighbor and street level views for these features to appear on the viewing screen.



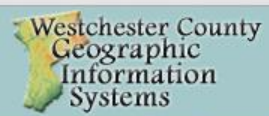
Mapping Westchester County



Search for a Location
Your search result
Thematic Map
Show Additional Data on Map

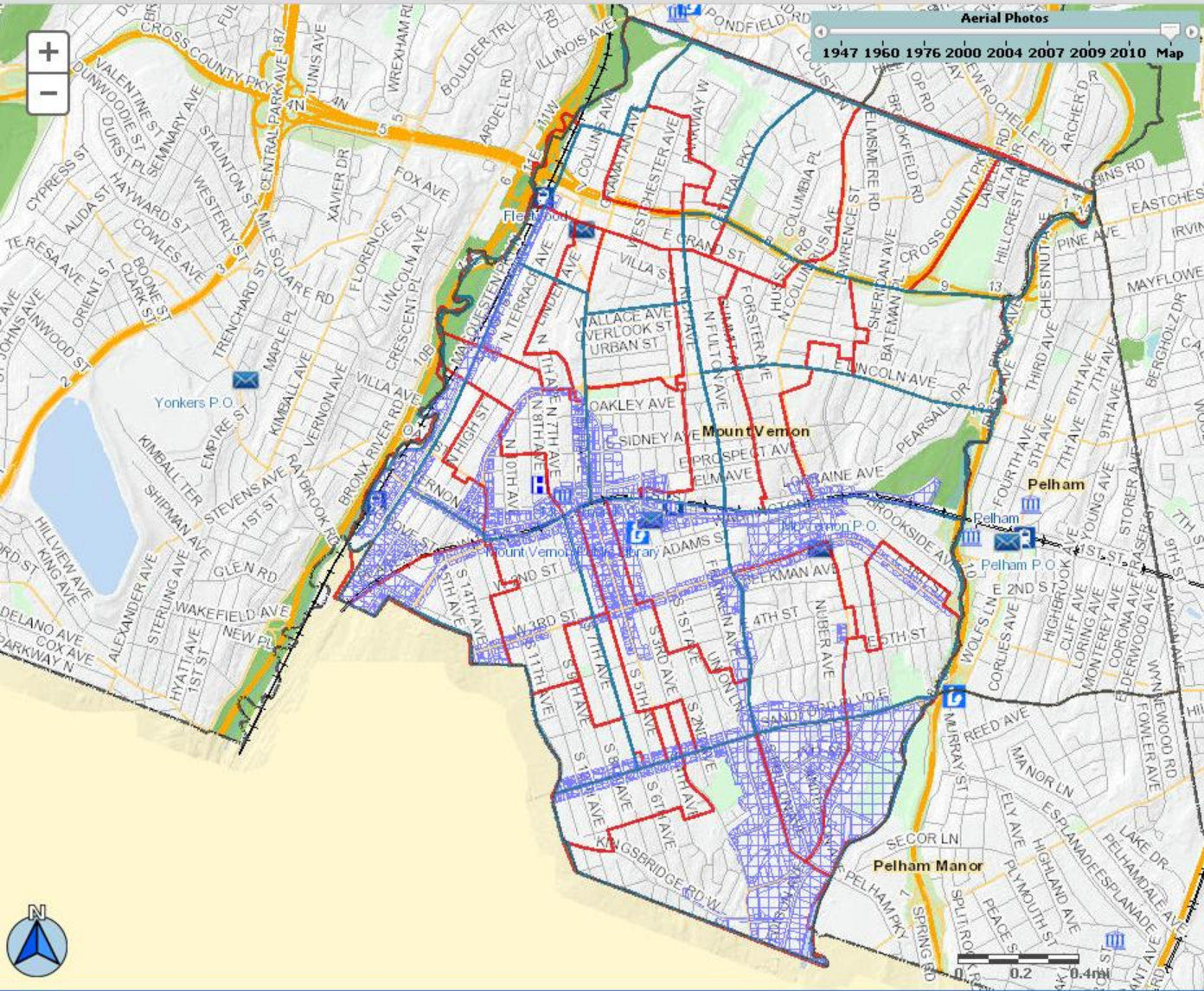
- Environmental Features
- Facilities and Services
- District Boundaries
- Transportation
- Emergency Zones/Support
- 2010 Census
- 2000 Census
- Local Government
 - Eastchester
 - Elmsford
 - Elmsford Zoning
 - Hastings-on-Hudson
 - Mount Vernon
 - New Rochelle
 - Rye Brook
 - Tuckahoe
 - Tuckahoe Storm Catchbasins
 - Tuckahoe Storm Manholes
 - Tuckahoe Storm Outfalls
 - Tuckahoe Storm Pipes
- Green Facilities and Services
- EPA Data
- Raster Data

User Note: Some layers (land use, 2 foot contours, etc.) are not visible at all scales. Users will have to "zoom-in" to neighbor and street level views for these features to appear on the viewing screen.



Mapping Westchester County

Help | Disclaimer



Search for a Location

Your search result

Thematic Map

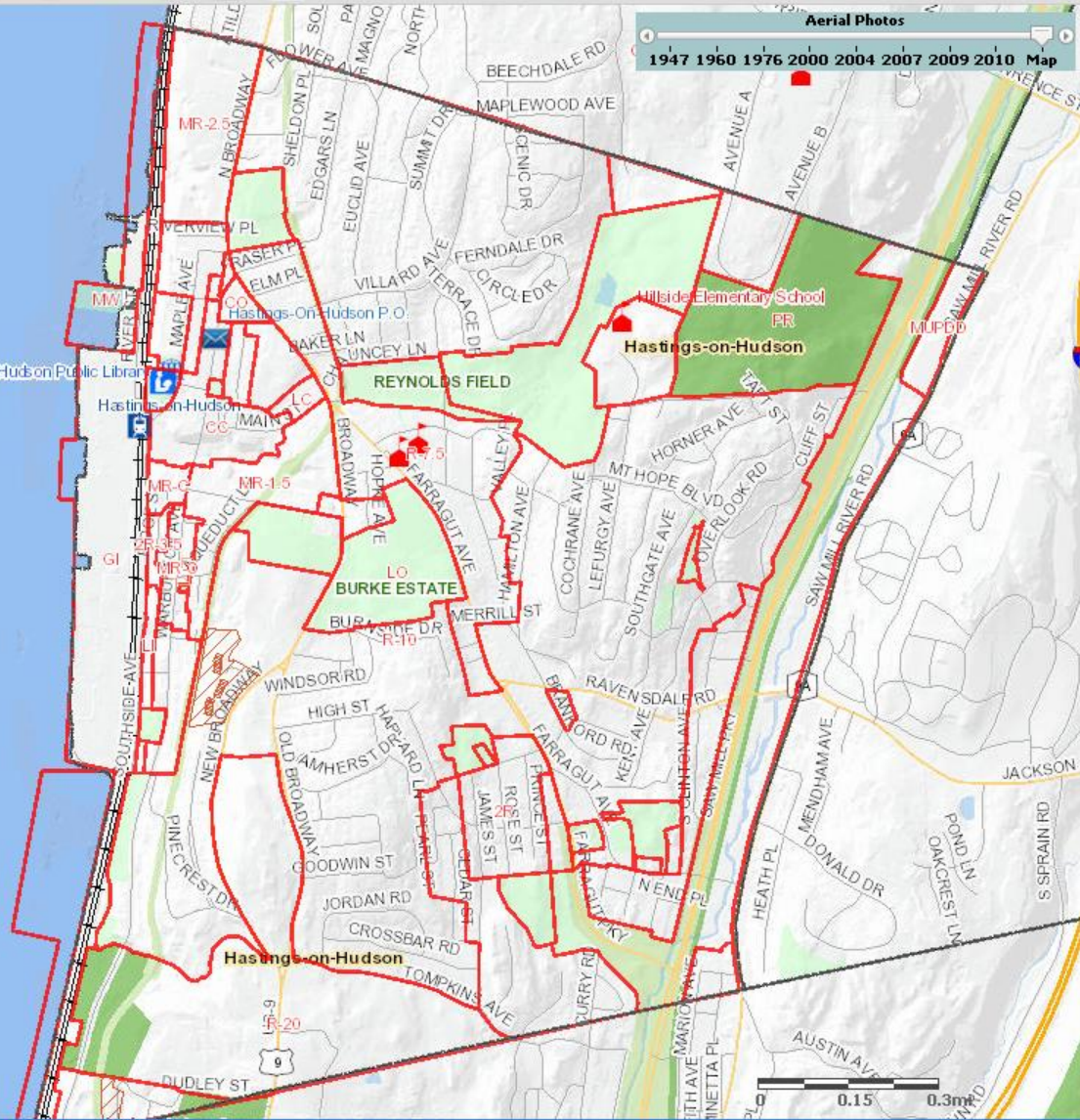
Show Additional Data on Map

- Environmental Features
- Facilities and Services
- District Boundaries
- Transportation
- Emergency Zones/Support
- 2010 Census
- 2000 Census
- Local Government
 - Eastchester
 - Elmsford
 - Elmsford Zoning
 - Hastings-on-Hudson
 - Mount Vernon
 - Empire Zones
 - Garbage Pickup Routes
 - Mt Vernon School Districts
 - Recycling Districts
 - Sanding Routes
 - Snow Plow Districts
 - New Rochelle
 - Rye Brook
 - Tuckahoe
- Green Facilities and Services
- EPA Data
- Raster Data

User Note: Some layers (land use, 2 foot contours, etc.) are not visible at all scales. Users will have to "zoom-in" to neighbor and street level views for these features to appear on the viewing screen.



Mapping Westchester County



Aerial Photos

1947 1960 1976 2000 2004 2007 2009 2010 Map

Search for a Location

Your search result

Thematic Map

Show Additional Data on Map

- Environmental Features
- Facilities and Services
- District Boundaries
- Transportation
- Emergency Zones/Support
- 2010 Census
- 2000 Census
- Local Government
 - Eastchester
 - Elmsford
 - Elmsford Zoning
 - Hastings-on-Hudson
 - Cluster Zoning Overlay
 - Zoning Districts
 - Neighborhood Commercial Overlay District
 - View Preservation District
 - Mount Vernon
 - New Rochelle
 - Rye Brook
 - Tuckahoe
- Green Facilities and Services
- EPA Data
- Raster Data

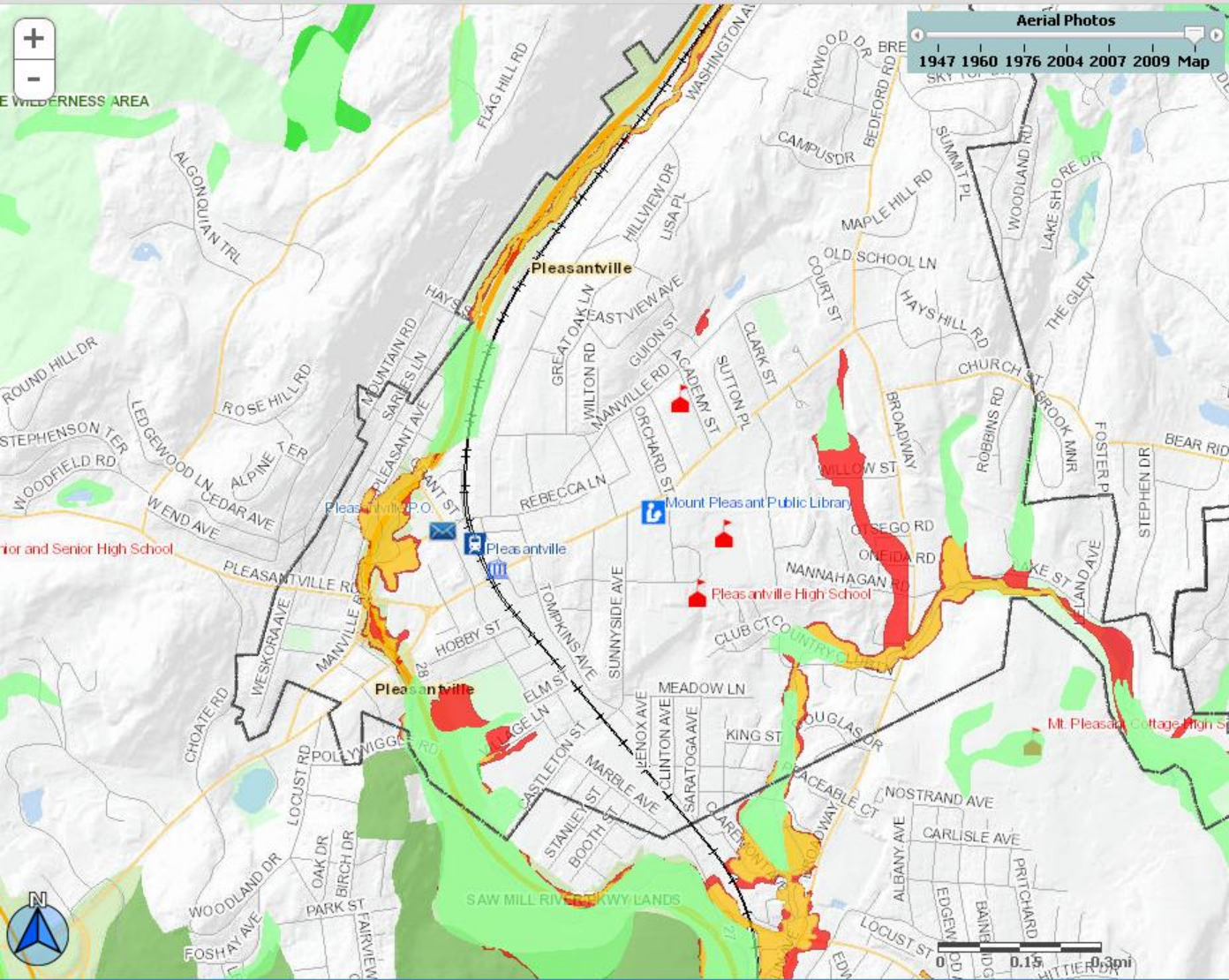
User Note: Some layers (land use, 2 foot contours, etc.) are not visible at all scales. Users will have to "zoom-in" to neighbor and street level views for these features to appear on the viewing screen.



Westchester County Geographic Information Systems

Mapping Westchester County

Help | Disclaimer



Aerial Photos

1947 1960 1976 2004 2007 2009 Map

Search for a Location
Your search result
Thematic Map

Show Additional Data on Map

- Private Recreation
- Public Institutions
- Private Institutions
- Public Non-Park Lands
- Cemeteries
- Water Supply Lands
- Farms, Stables and Nurseries
- Utility Lines and Aqueeducts
- Critical Environmental Areas
- Hydric Soil Wetlands
- NYS Regulated Wetlands
- Tidal Wetlands
- Coastal Shoals/Bars/Mudflats
- Formerly Connected Tidal Wetlands
- High Marsh/Salt Meadow
- Intertidal Marsh
- Landward Extent/No Code
- Flood Plains
 - 100 Year Flood Plain
 - 500 Year Flood Plain
- Steep Slopes
 - Slopes 15%-25%
 - Slopes Over 25%
- Fish and Wildlife Habitats
- Aquifers
 - > 100 Gallons per Minutes
 - 10-100 Gallons per Minutes
- Land Use
 - Agricultural Uses - Farms, Stables, Nurseries
 - Single Family Residential

Message

Reply	Reply to All	Forward	Delete	Move to Folder	Create Rule	Other Actions	Block Sender	Not Junk	Categorize	Follow Up	Mark as Unread	Find	Related	Select
Respond			Actions			Junk E-mail	Options			Find				

You replied on 12/29/2011 10:00 AM.

From: Marx, Cynthia
 To: Wear, Sam; Hiraldo-Gomez, Ana
 Cc: Tang, Dongming; Cui, Xiaobo
 Subject: RE: List of URLs for local governments in Mapping Westchester County

Sent: Thu 1/14/2010 1:20 PM

Ardley -	http://giswww.westchestergov.com/gismap/viewer.aspx?ActiveId=Municipal%20Boundaries&Query=WCMUN_NAME='Ardley'&QueryZoom=Yes
Bedford -	http://giswww.westchestergov.com/gismap/viewer.aspx?ActiveId=Municipal%20Boundaries&Query=WCMUN_NAME='Bedford'&QueryZoom=Yes
Briarcliff Manor -	http://giswww.westchestergov.com/gismap/viewer.aspx?ActiveId=Municipal%20Boundaries&Query=WCMUN_NAME='Briarcliff Manor'&QueryZoom=Yes
Bronxville -	http://giswww.westchestergov.com/gismap/viewer.aspx?ActiveId=Municipal%20Boundaries&Query=WCMUN_NAME='Bronxville'&QueryZoom=Yes
Buchanan -	http://giswww.westchestergov.com/gismap/viewer.aspx?ActiveId=Municipal%20Boundaries&Query=WCMUN_NAME='Buchanan'&QueryZoom=Yes
Cortlandt -	http://giswww.westchestergov.com/gismap/viewer.aspx?ActiveId=Municipal%20Boundaries&Query=WCMUN_NAME='Cortlandt'&QueryZoom=Yes
Croton-on-Hudson -	http://giswww.westchestergov.com/gismap/viewer.aspx?ActiveId=Municipal%20Boundaries&Query=WCMUN_NAME='Croton-on-Hudson'&QueryZoom=Yes
Dobbs Ferry -	http://giswww.westchestergov.com/gismap/viewer.aspx?ActiveId=Municipal%20Boundaries&Query=WCMUN_NAME='Dobbs Ferry'&QueryZoom=Yes
Eastchester -	http://giswww.westchestergov.com/gismap/viewer.aspx?ActiveId=Municipal%20Boundaries&Query=WCMUN_NAME='Eastchester'&QueryZoom=Yes
Elmsford -	http://giswww.westchestergov.com/gismap/viewer.aspx?ActiveId=Municipal%20Boundaries&Query=WCMUN_NAME='Elmsford'&QueryZoom=Yes
Greenburgh -	http://giswww.westchestergov.com/gismap/viewer.aspx?ActiveId=Municipal%20Boundaries&Query=WCMUN_NAME='Greenburgh'&QueryZoom=Yes
Harrison -	http://giswww.westchestergov.com/gismap/viewer.aspx?ActiveId=Municipal%20Boundaries&Query=WCMUN_NAME='Harrison'&QueryZoom=Yes
Hastings-on-Hudson -	http://giswww.westchestergov.com/gismap/viewer.aspx?ActiveId=Municipal%20Boundaries&Query=WCMUN_NAME='Hastings-on-Hudson'&QueryZoom=Yes
Irvington -	http://giswww.westchestergov.com/gismap/viewer.aspx?ActiveId=Municipal%20Boundaries&Query=WCMUN_NAME='Irvington'&QueryZoom=Yes
Larchmont -	http://giswww.westchestergov.com/gismap/viewer.aspx?ActiveId=Municipal%20Boundaries&Query=WCMUN_NAME='Larchmont'&QueryZoom=Yes

Yorktown, New York

Progress with Preservation

OUR COMMUNITY

GOVERNMENT

BUSINESS

QUICK LINKS

Search the site!

Search



Planning

Home » Planning Home » GIS/Mapping

GIS/Mapping

Yorktown on Mapping Westchester Interactive Map

MAPPING WESTCHESTER COUNTY

Layers Search Database

- Map Aerial Photo
- Environmental Features
- Facilities and Services
- District Boundaries
- Transportation
- Emergency Zones/Support
- 2000 Census
- Local Government
- Green Facilities and Services
- Master Data

Auto Refresh Refresh Map

Planning Home

- o About the Planning Department
- ▼ Planning Board
 - o 2013 Meetings
 - o Submission Deadlines
 - o Minutes Archive
 - o Meeting Videos Archive
- ▼ Advisory Board on Architecture & Community Appearance (ABACA)
 - o ABACA Application
 - o Upcoming Meetings
- ▼ Applications and Permits
 - o Planning Review Process
 - o Pre-Preliminary Application
 - o Minor Subdivision Application
 - o Major Subdivision Application
 - o Site Plan Application
 - o Special Use Permit Application
 - o FSWPPP, Wetland, and/or Tree Permit Application
- ▼ Checklists

+myConnections: Engage your community - connect to news, events and information you care about. [View more information...](#)

Sign In

RESIDENTS VISITORS BUSINESS GOVERNMENT HOW DO I...?



[HISTORIC DISTRICT INFORMATION PAGE](#)

[IRVINGTON RESTAURANT GUIDE](#)

Important Links:


[Mercy College Expansion DEIS Documents](#)

[Continuum DEIS Documents](#)

 [Procedure for Continuum Application](#)

[Continuum FEIS Documents](#)

[Waterfront Zoning Information](#)

- Search our site 
- Upcoming Events
- Watch a Meeting
- Cable TV Schedule
- Email Notifications
- Forms and Documents
- Village Code
- Bids and Contracts
- Learn About Stormwater
- Farmers Market
- Green Policy Task Force
- Mapping Irvington
- Building Permits - Apply Online

EVENTS CALENDAR [VIEW ALL](#)

Wed, Nov. 13
Village Board Worksession

Mon, Nov. 18
Village Board Meeting

Mon, Nov. 25
Architectural Review Board

IRVINGTON NEWS [VIEW ALL](#)

Veterans' Day Holiday Schedule Changes and Ceremony
[Read on...](#)

Election Results
[Read on...](#)

Public Hearing on Local Law Continued
[Read on...](#)

A Statement by the Board of Trustees on the Historic District Application
[Read on...](#)

Village Tax Bills Mailed
First Half Taxes Due by Monday, July 1, 2013. [Read on...](#)

WATER RATE INCREASE
[Read on...](#)



IRVINGTON CONNECTED

 NOTIFY



[Standard Work Day and Reporting Resolution 2013](#)

[Notice Under the Americans with Disabilities Act](#)

[180 Day ADA Progress Report For Users with Disabilities](#)

Health Care Insurance Questions?
call Amber Wilson
at Westchester County Department of Health
Call for appointment:
Office: 914-813-5192
Cell: 914- 336-0925

*On Monday, November 11, 2013
 Veterans Day Lewisboro Pack 1 will be
 presenting their annual Flag
 Placement Ceremony on the Town House*

visit the website of our e-waste vendor, Regional Computer Recycling & Recovery, at www.eWASTE.com.

[Town Board Minutes](#)

[2013 Town of Lewisboro Adopted Budget](#)

[2013 Final Assessment Roll](#)

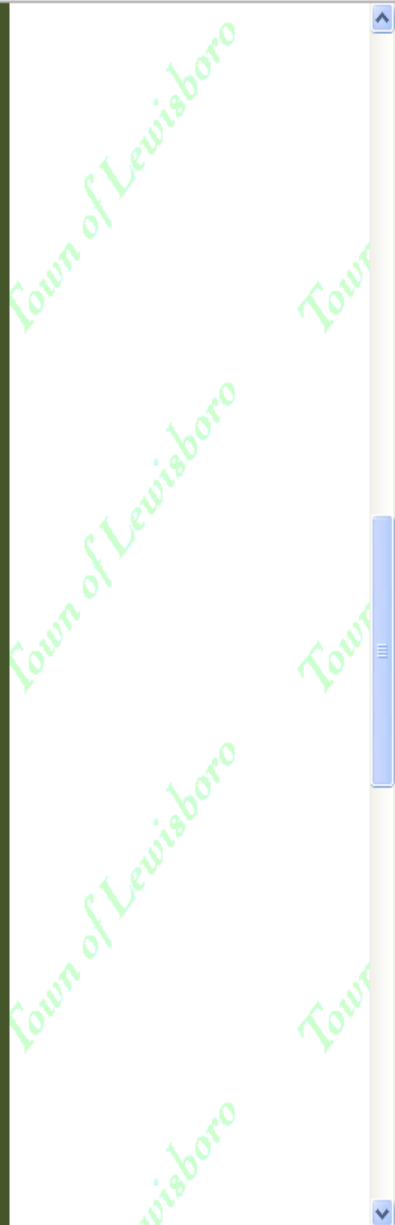
[Tax Parcel Viewer](#)

[LCTV Channel Guides \(Lewisboro Community Television\)](#)
Includes Town Board meetings (work sessions are not videotaped.)

Town Board Meeting Videos can also be found [here](#) on the "Minutes" page

[Video Library](#)
 (includes recent Town Board meetings)

[Parks & Recreation Fall 2013 Brochure](#)





Let Us Help
Village of Rye Brook Offices
938 King Street
Rye Brook, NY 10573
Hours: M-F 8:30 AM- 4:30 PM
Tel: (914) 939-1121

[About Us](#) | [Contact Us](#) | [I Am Looking For...](#) | [I Want To...](#) | [Senior Services & AJP](#) | [TV/Video](#)

Print this page Email this page

November 11, 2013
10:25 AM

- [Home](#)
- [Village Government](#)
- [Village Departments](#)
- [Forms / Publications](#)
- [Village Code Book](#)
- [Links / Resources](#)

Welcome to the **Village of Rye Brook's** website. Our village is located in southern Westchester County in the state of New York, approximately 40 minutes north of New York City. If you would like to contact us click on the Contact Us link above. Thank you.

ANNOUNCEMENTS

STAR Registration Program

New state legislation requires all homeowners currently receiving a Basic STAR exemption to register again with the New York State Tax Department in order to continue to receive this exemption in 2014 and subsequent years. Additional information including online registration is available at the [NYS Department of Taxation and Finance](#) web site.

2013 Leaf Collection Program

Beginning Monday October 7, 2013 and continuing through to third week of December, the village's Highway Department will be collecting curbside leaves. [More](#)

Rye Brook's First Comprehensive Plan

The Village of Rye Brook invites residents to the next Comprehensive Plan Workshop... [More](#)

Upcoming Events

GIS and Tax Maps
Town of Rye Tax Assessments
Monday, September 10th at 9:30pm.

[Click here for on-line for recreation programs please click here.](#)

ordinance creating the **Do Not Knock Registry** to prohibit solicitors, including from approaching residential homes that have expressly opted out of the **Do Not Knock Registry**. [Enter your address.](#)

Receive Updates from the Village

To receive e-mail updates, important information, announcements or meeting agendas... [More](#)

2013 Sanitation and Recycling Schedules Available

**Leaves...
The Rights
and Wrongs**

Latest Village Green News

- [BOT Public Hearings](#)
- [RBTV Schedule](#)
- [Reckson Ice Rink Application Withdrawn](#)
- [King Street Sidewalk Replacement](#)
- [Library Happenings](#)
- [Fee Schedule](#)
- [Get Connected. Get Answers.](#)
- [Find Your Lost Money!](#)

[More News...](#)

Events Calendar

- 11/11 Veterans' Day - Village Hall Closed
- 11/12 Village Board Meeting
- 11/14 Environmental Conservation

Google Translate

Select Language

Gadgets powered by Google

Translation Disclaimer


- ASSESSOR**
- Pay Your Taxes Online
- DEVELOPMENT DEPARTMENT**
- JUSTICE COURT**
- ADVISORY BOARDS**

PAY TAXES ONLINE



Click here to pay your taxes online.

Westchester County's Tax Parcel Viewer



[Click Here](#)

(914) 238-4722
Fax: (914) 238-2537
Office Hours: Monday-Friday, 8:45a.m. - 4:30p.m.
Email: assessor@town.new-castle.ny.us

Philip M. Platz, Esq. IAO.
 Town Assessor
Appointed by Town Board for six year term.

Jackie MacMahon
 Assessment Clerk -
 (Contact for all exemption applications.)

Bill Pforzheimer
 Senior Real Property Appraiser

- Prepares assessments of real property within the Town.
- Updates assessments annually and publishes tentative assessment roll on June 1st.
- The Town Assessor welcomes meetings with residents to explain the assessment process and review assessment concerns.
- Residents dissatisfied with assessments appeal to Board of Assessment Review
- This board reviews assessment complaints (grievances), deliberates and notifies the property owner and Assessor of their final determination.
- The Assessor then files the Final Assessment Roll in September.
- For more information, review the grievance procedure.
- Receives and grants S.T.A.R. and Veterans and Senior (Aged) Exemption applications.
- More information is available on tax collection and assessment records.

The Town of New Castle GIS Tax Parcel Maps may soon be available on the Internet. They will offer a limited view of the overall tax parcels that are within the Town of New Castle.

THE 2013 TENTATIVE ROLL

Below are the 2013 Tentative Roll files in PDF Format.

- 2013 Tentitive Roll.pdf
- 2013 Tentitive Totals.pdf

THE 2012 FINAL ROLL

Below are the 2012 Final Roll files in PDF Format.

- 2012 Final Roll 091412.pdf
- 2012 Roll Totals 091412.pdf

THE 2011 FINAL ROLL

Below are the 2011 Final Roll Files in



Contact Us
Subscribe to News

- On Our Site
- Home Page
- About the Village
- Events Calendar
- Departments
- Boards & Committees
- Recreation & Parks
- GIS Maps
- Mayor's Corner
- Minutes & Agendas
- On-Demand Webcasts
- Train Station Parking
- Village Code
- Important Links

Search



Village Departments

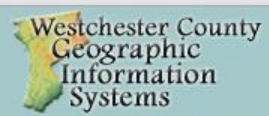
[Printer-Friendly Version](#)



Stanley H. Kellerhouse Municipal Building
1 Van Wyck Street
Croton-on-Hudson, New York 10520
914-271-4781

[Directions to the Municipal Building](#)

[Village Street Map](#)
Also available at the Village Office



Mapping Westchester County

Help | Disclaimer



Add Map Service



NOAA Coastal Inundation Hazards

[Legend](#)



FEMA Coastal Flood Risk Zones

[Legend](#)



Digital Surface Model

[Legend](#)

Clear

Last Selection

Clear Last Selection

Historical Photos

2004 2007 2009 2010 **Map**



Search for a Location

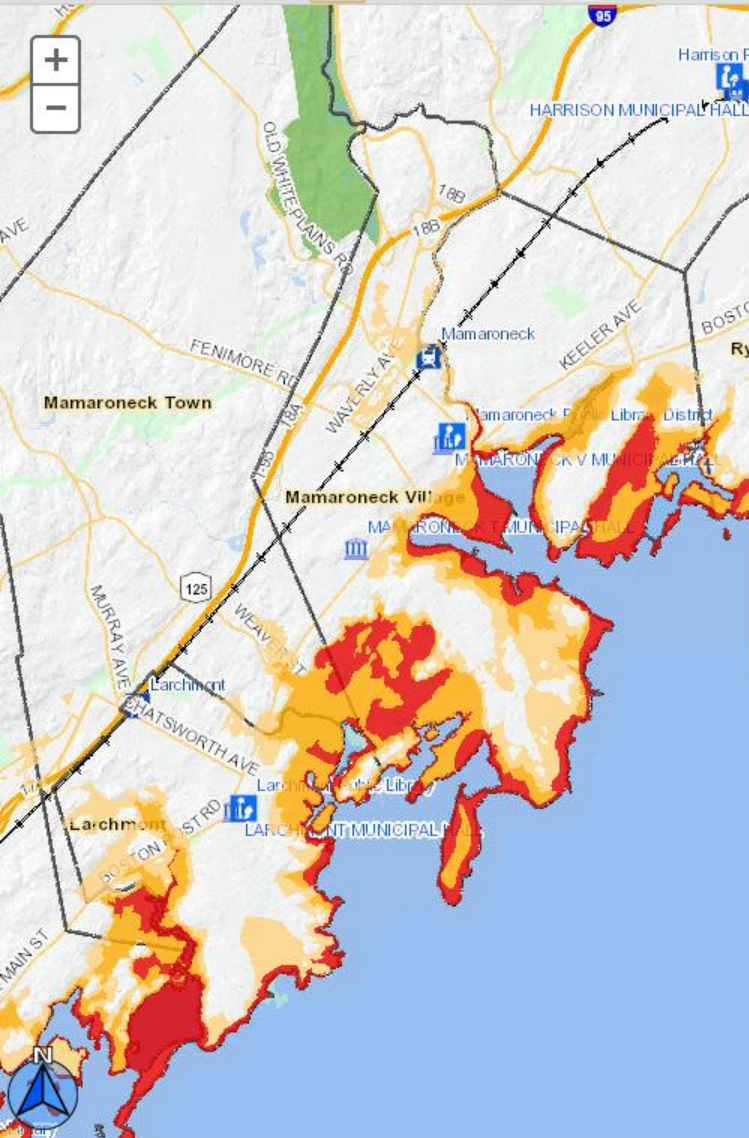
Your search result

Thematic Map

Show Additional Data on Map

- Environmental Features
- Facilities and Services
- District Boundaries
- Transportation
- Emergency Zones/Support
- 2010 Census
- 2000 Census
- Local Government
- Green Facilities and Services
- EPA Data
- Raster Data

User Note: Some layers (land use, 2 foot contours, etc.) are not visible at all scales. Users will have to "zoom-in" to neighbor and street level views for these features to appear on the viewing screen.



Legend

- NOAA Coastal Inundation Hazards Legend
- FEMA Coastal Flood Risk Zones Legend
- Digital Surface Model Legend

Clear
Last Selection
Clear Last Selection

Historical Photos

2004 2007 2009 2010 Map

Search for a Location

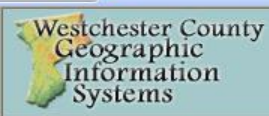
Your search result

Thematic Map

Show Additional Data on Map

- Environmental Features
- Facilities and Services
- District Boundaries
- Transportation
- Emergency Zones/Support
- 2010 Census
- 2000 Census
- Local Government
- Green Facilities and Services
- EPA Data
- Raster Data

User Note: Some layers (land use, 2 foot contours, etc.) are not visible at all scales. Users will have to "zoom-in" to neighbor and street level views for these features to appear on the viewing screen.



Mapping Westchester County

Help | Disclaimer



Aerial Photos

1947 1976 2004 2007 2009 Map

Search for a Location

Search Type:
Address

Street:
148 Martine Ave

City: White Plains Zip Code: 10601

- What are you looking for?
- Locate An Address
 - Solar Power Property Finder
 - Indian Point Evacuation Zone
 - Hurricane Evacuation Zone
 - County Sewer District
 - Elected Officials
 - Livable Communities
 - Green Facilities/ Services
 - Facilities and Services
 - Westchester Be Fit
 - Traffic Cameras



Your search result

Thematic Map

Show Additional Data on Map



- INTERACTIVE MAPPING**
- Mapping Westchester
- Municipal Tax Parcel Viewer
- Solar Property Locator
- Green Map Locator
- Hurricane Zone Finder
- Indian Point Plan
- Elected Officials
- Livable Communities
- County Sewer Districts

Interactive Mapping Applications

For a brief description of Westchester County's Public GIS Mapping Applications, please read below.

Mapping Westchester County

Mapping Westchester County is the county's primary internet mapping portal, providing access to dozens of datasets, and to specialized "County Locators": Hurricane Zone, Indian Point Plan, Elected Officials, Community Services, and Green Facilities. In addition, select county datasets - designated by this icon - can be downloaded directly from the mapping application.

Visit Mapping Westchester County

- Solar Property Locator
- Indian Point Plan
- Hurricane Zone Finder
- County Sewer Districts
 - Ardsley
 - Briarcliff Manor
 - Bronxville
 - Dobbs Ferry
 - Eastchester
 - Elmsford
 - Hastings-on-Hudson
 - Irvington
 - Peekskill
 - Mt Kisco
- Elected Officials
- Livable Communities
- Facilities and Services
- Westchester Be Fit
- Traffic Cameras

Municipal Tax Parcel Viewer

This viewer allows users to identify parcels, print maps, export a query result, and more. There are several municipalities in the County. Please check back periodically for updates. Select a municipality from the dropdown menu and press go.

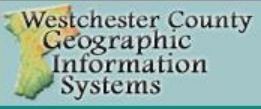
Address or owner name. Users can also search by parcel number or address labels needed for an 'abutters' notice. Select a municipality from the dropdown menu and press go.

Ardsley

Westchester Green Map

In April 2007, Westchester County GIS launched the Westchester County Green Map, an interactive web-based mapping application which highlights green industries, recycling programs, fuel efficient transportation systems, and community based projects. The Green Map was initiated as part of the County Executive's Climate Change project.

Visit Westchester Green Map Find Green Facilities and Services Now



Municipal Tax Parcel Viewer

You are searching: **Irvington.** [Change](#)

Search by owner's name

Enter print key or address

Search

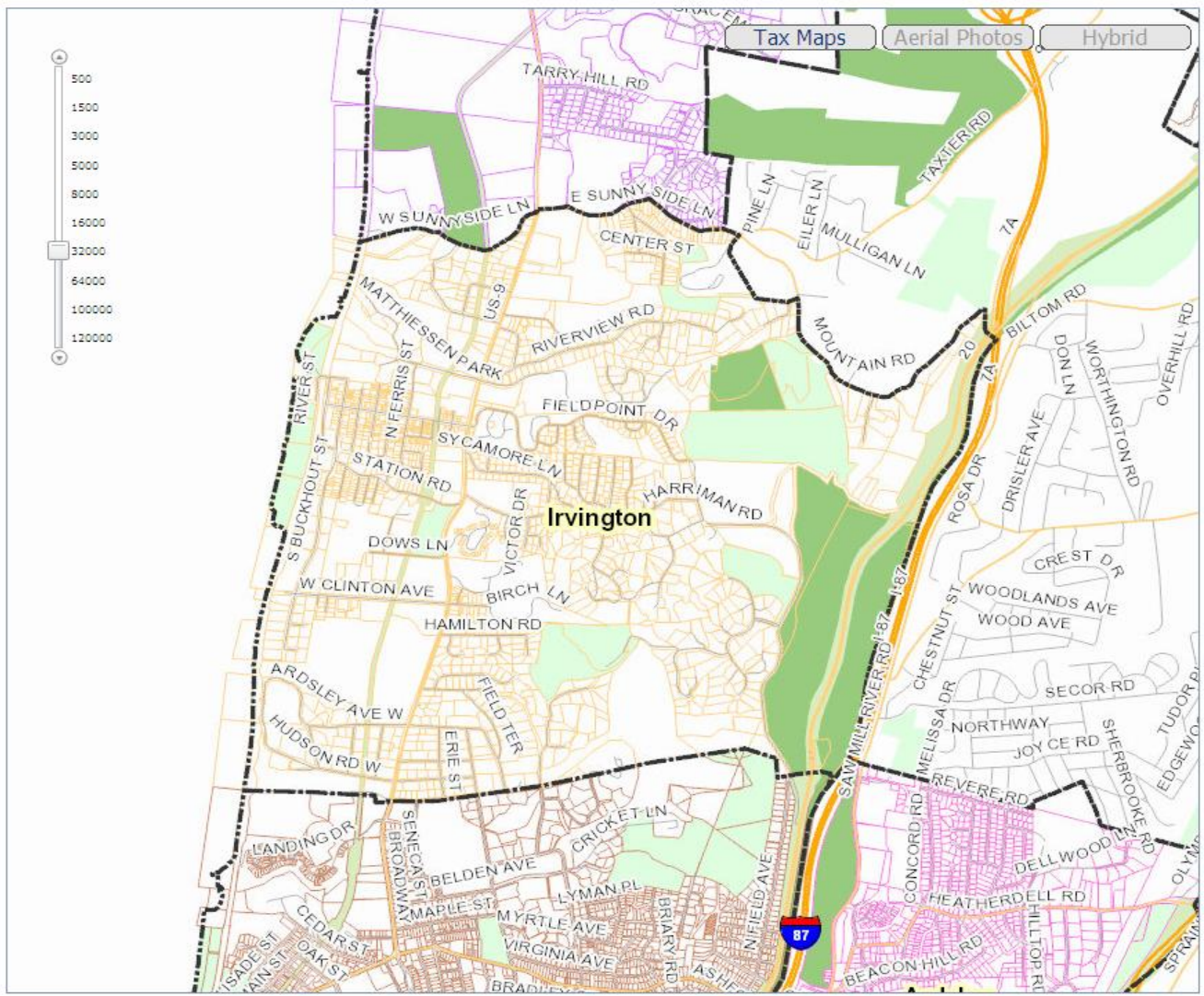
1. Search by Print Key or Address. For example, 2.90-48-3 or 35 S BROADWAY.

2. Check the 'Search by owner's name' box to search owner. For example, school or village. Note: some municipalities don't have ownership data or the data is not complete.

Important Note:
- All search and query will be strictly constrained in above municipality.

- To get best search result, please select the address from the AutoComplete dropdown list; Or omit street type, such as street or st, avenue or ave, lane or ln for address search.

- **DO NOT** include state, city or ZIP in the address search.



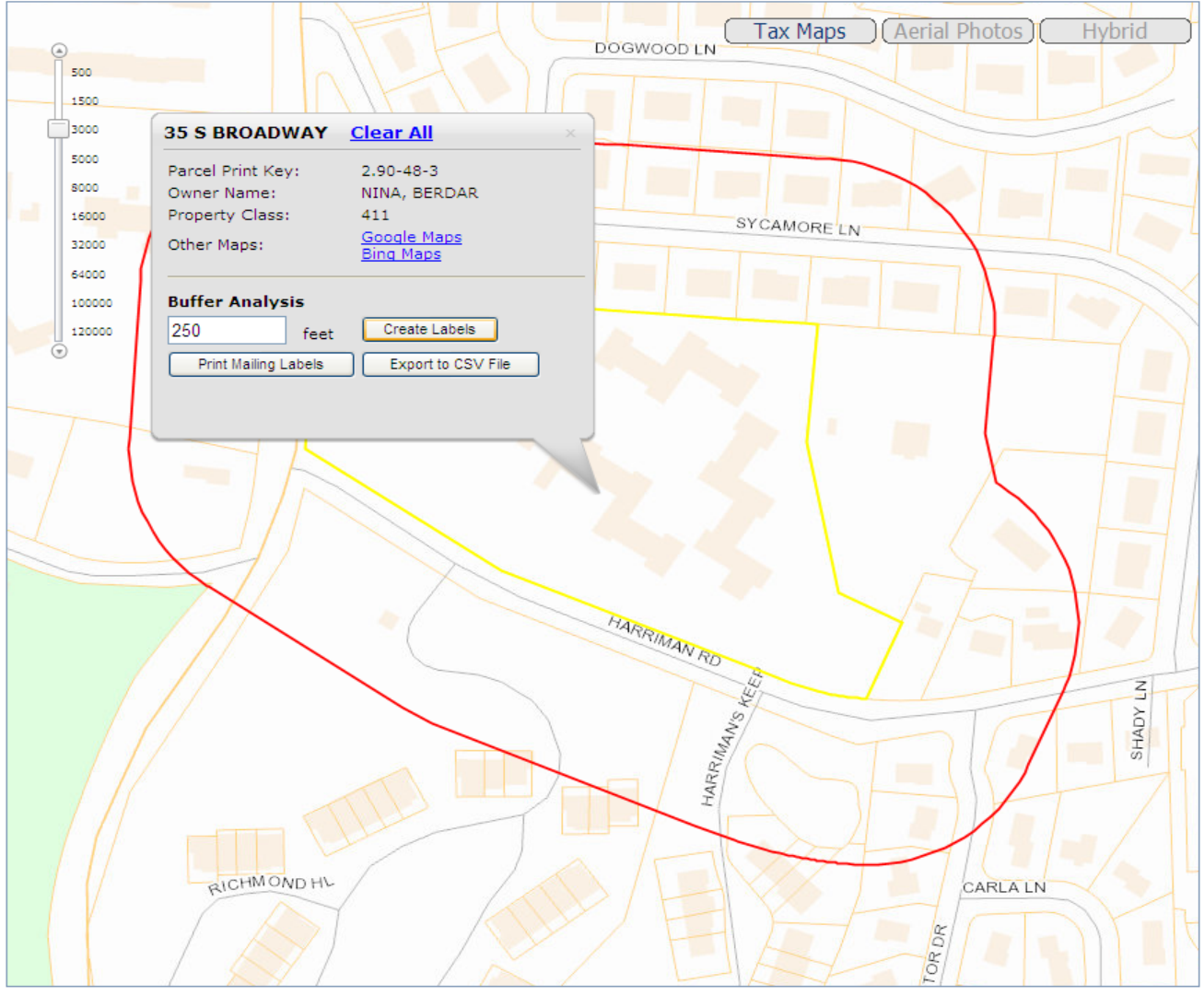
Tax Maps Aerial Photos Hybrid

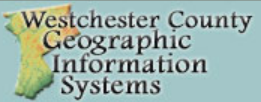
You are searching: **Irvington.** [Change](#)

Search by owner's name
35 S BROADWAY **Search**

45 parcels found, click row to see it on map.

OWNER	ADDRESS	PRINT KEY
HAHM, EDWARD B	32 SYCAMORE LA	2.90-48-2
FERRAN, MARY B	79 HARRIMAN RD	2.90-48-8
MELVIN, MARY L	40 SYCAMORE LA	2.90-48-2
LAU, TAK-CHING K	48 SYCAMORE LA	2.90-48-1
NINA, BERDAR	35 S BROADWAY	2.90-48-3
PALERMO, DANIEL	24 SYCAMORE LA	2.90-48-2
LAHIRI, MURALI	56 SYCAMORE LN	2.90-48-1
SCHAEFFER, PETER A	64 SYCAMORE LN	2.90-48-1
SIVIGLIA, PETER	72 SYCAMORE LN	2.90-48-1
SCHULTZ, LORRAINE	82 SYCAMORE LN	2.90-48-1
DENARDO, JOSEPH	83 HARRIMAN RD	2.90-48-5
TUGAL, OSMAN	17 SYCAMORE LN	2.90-45-4
BACHARACH, SETH & LEAH	30 SYCAMORE LN	2.90-48-1
ZERBO, MICHAEL	4 DOGWOOD LA	2.90-45-2
IMAMURA, KK	59 SYCAMORE LA	2.90-45-2
n/a	30 S BROADWAY	2.90-44-2
BRANDT, DANIEL B	27 SYCAMORE LA	2.90-45-5
LA ROSA, JULIUS	67 SYCAMORE LA	2.90-45-2
FERRARO, ERNEST	33 SYCAMORE LA	2.90-45-2
LASERNA, GUSTAVO A	39 SYCAMORE LN	2.90-45-2
WAN, DR CHEE-CHANG	45 SYCAMORE LA	2.90-45-3
GUERRERO, DAVID E.A.	51 SYCAMORE LA	2.90-45-3
WILSON, STEVEN A	28 SYCAMORE LA	2.90-48-2
POLISAR, MARK	26 SYCAMORE LA	2.90-48-2
n/a	BROADWAY	2.90-50-1
DENARDO, JOSEPH	81 HARRIMAN RD	2.90-48-4
GILLILAND, MARK	85 HARRIMAN RD	2.90-48-7





Municipal Tax Parcel Viewer

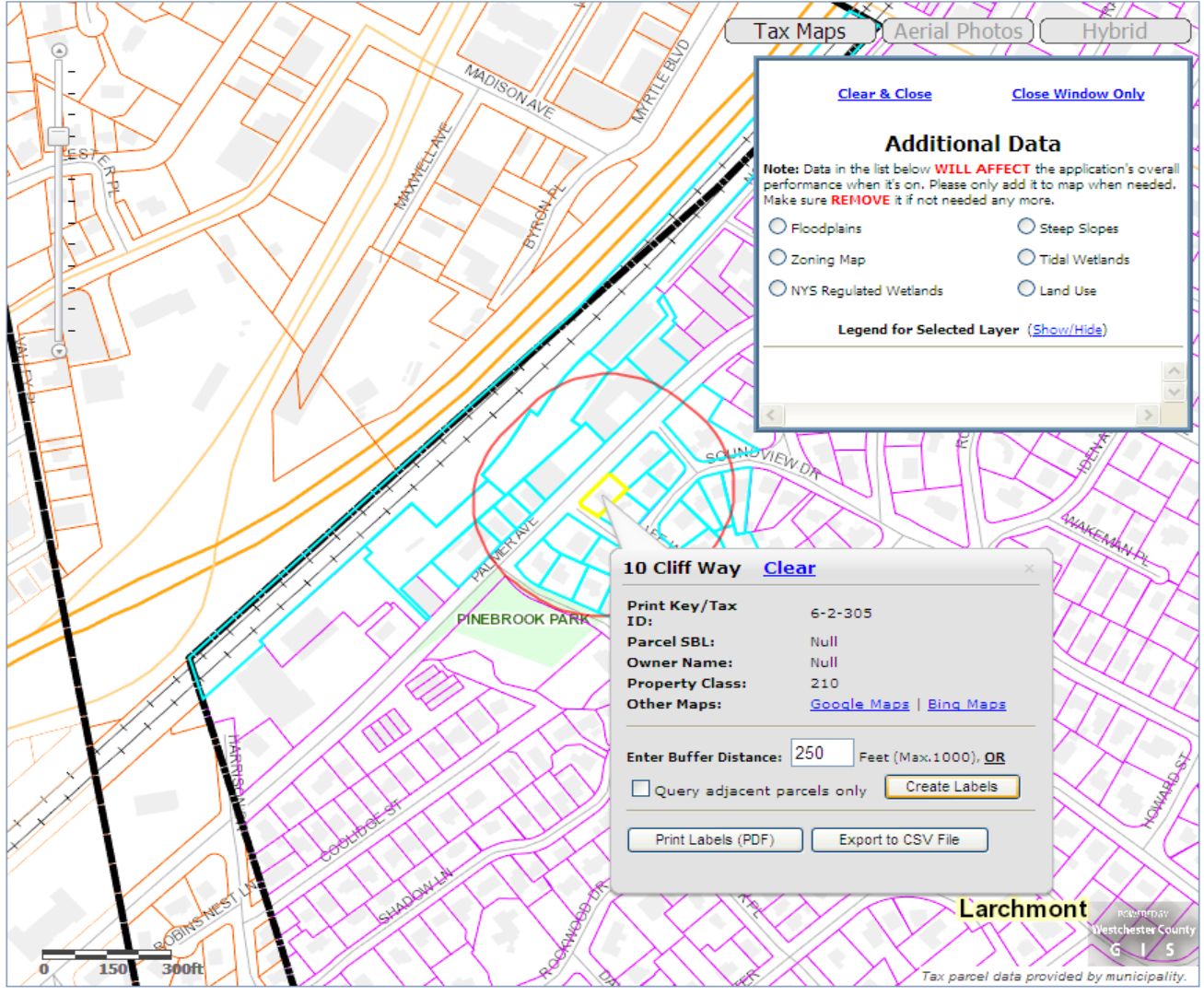
You are searching: **Larchmont.** [Change](#)

Search by owner's name

10 Cliff Way

32 parcels were found. Click row for map.

OWNER	ADDRESS	PRINT KEY	SBL
n/a	15 Soundview Dr	6-5-413	
n/a	4 Cliff Way	6-5-430	
n/a	86 Stuyvesant Ave	6-5-318	
n/a	7 Soundview Dr	6-5-393	
n/a	9 Soundview Dr	6-5-400	
n/a	11 Soundview Dr	6-5-406	
n/a	6 Soundview Dr	6-2-214	
n/a	8 Soundview Dr	6-2-270	
n/a	North Ave	6-2-494	
n/a	2005 Palmer Ave	6-2-351	
n/a	2039 Palmer Ave	6-2-331	
n/a	94 Stuyvesant Ave	6-1-316	
n/a	77 Pine Brook Dr	6-1-420	
n/a	79 Pine Brook Dr	6-1-413	
n/a	81 Pine Brook Dr	6-1-404	
n/a	83 Pine Brook Dr	6-1-387	
n/a	9 Cliff Way	6-1-368	
n/a	7 Cliff Way	6-1-360	
n/a	5 Cliff Way	6-1-352	
n/a	3 Cliff Way	6-1-344	
n/a	90 Stuyvesant Ave	6-1-327	
n/a	2051 Palmer Ave	6-1-525	
n/a	2053 Palmer Ave	6-1-520	
n/a	2061 Palmer Ave	6-1-515	
n/a	2067 Palmer Ave	6-1-500	
n/a	Palmer Ave	6-1-486.1	
n/a	18 Glen Lake Dr	6-2-283	
n/a	10 Soundview Dr	6-2-283	
n/a	12 Soundview Dr	6-2-257	



Tax Maps | Aerial Photos | Hybrid

[Clear & Close](#) [Close Window Only](#)

Additional Data

Note: Data in the list below **WILL AFFECT** the application's overall performance when it's on. Please only add it to map when needed. Make sure **REMOVE** it if not needed any more.

- Floodplains
- Zoning Map
- NYS Regulated Wetlands
- Steep Slopes
- Tidal Wetlands
- Land Use

Legend for Selected Layer ([Show/Hide](#))

10 Cliff Way [Clear](#)

Print Key/Tax ID: 6-2-305

Parcel SBL: Null

Owner Name: Null

Property Class: 210

Other Maps: [Google Maps](#) | [Bing Maps](#)

Enter Buffer Distance: Feet (Max.1000), [OR](#)

Query adjacent parcels only

Larchmont
Westchester County
GIS
Tax parcel data provided by municipality.

Data Warehouse



- DATA WAREHOUSE**
 - County Data Download
 - Municipal Tax Maps
 - Orthophotography
 - 2-Foot Topo
 - LIDAR
-
- Frequently Asked Questions

Data Warehouse

Westchester County datasets are available for download. Please browse the web pages below to view available datasets.

County Data Download

Countywide datasets are grouped by theme (district and boundaries, community facilities, environmental features, planning, transportation and census boundaries). Data can be downloaded in either a zipped ESRI shapefile or a Google Earth KMZ file. These datasets were developed by Westchester County GIS or are based on data obtained from other organizations. Users are encouraged to review coverage metadata.

Municipal Tax Maps

In cooperation with selected local governments, Westchester County GIS is providing digital tax parcel data online for download. The amount of attribute data associated with each tax parcel varies by municipality.

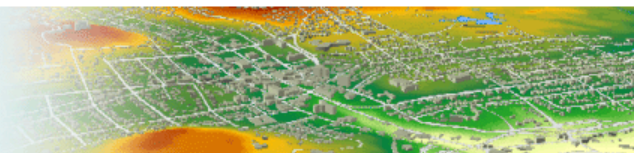
An interactive **Municipal Tax Parcel Viewer** is also made available online that allows users to identify local parcel data by address, print key or owner name (if available). Users can also print maps, export a query result, and generate mailing labels needed for an 'abutters' notice.

Orthophotography

Digital Orthophotography covering Westchester County.

2-Foot Topo

2004 CAD .dwg file format covering Westchester County. Each file covers 5000 ft by 5000 ft on the ground. Vertical Datum is NAVD88. Data meets National Map Accuracy Standards at 1"=100'.



DATA WAREHOUSE

County Data Download

- Base Map Planimetrics
- Boundary & Districts
- Census
- Community Facilities
- Environmental Planning**
- Transportation
- Municipal Tax Maps
- Orthophotography
- 2-Foot Topo
- LIDAR

Frequently Asked
Questions

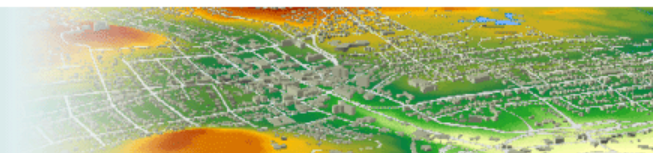
Environmental Data Downloads

Data Warehouse > County Data Download > Environmental Features

Click dataset name for additional information (where available). Click shapefile and KMZ globes to download the zipped data files.

Dataset	SHP	KMZ
2006 Soil Survey (SSURGO)	26.9 MB	
Beaches (Public and Private Locations)	9 KB	
Bedrock Geology	168 KB	
Citizen Water Monitoring Sites	11 KB	4 KB
County Designated Critical Environmental Areas	260 KB	296 KB
County Sewage Treatment Plants	7 KB	3 KB
Digital Elevation Model (50- Foot)	41 MB	
FEMA 100 & 500 year flood plains (2007)	14.3 MB	16.6 MB
Gaging Stations	8 KB	
Hazardous Waste Sites	111 KB	72 KB
Hydric Soil Wetlands	4.16 MB	4.23 MB
Land Cover Classification	343 KB	
Major & Minor Drainage Divides (2012)	527 KB	612 KB
Major Drainage Basins	167 KB	
National Wetland Inventory	2.21 MB	
NYS Designated Freshwater Wetlands	593 KB	625 KB
Steep Slopes	111 MB	
Sewage Treatment Facilities (Private)	5 KB	5 KB
Stormwater Outfalls	69 KB	
Surface Geology	269 KB	
Tidal Wetlands	663 KB	883 KB

Westchester County Geographic Information Systems



[Home](#)
[Interactive Mapping](#)
[Data Warehouse](#)
[Service Center](#)
[Shared Services](#)
[About Us](#)

DATA WAREHOUSE

County Data Download

Base Map Planimetrics

[Boundary & Districts](#)
[Census](#)
[Community Facilities](#)
[Environmental Planning](#)
[Transportation](#)
[Municipal Tax Maps](#)
[Orthophotography](#)
[2-Foot Topo](#)
[LIDAR](#)

[Frequently Asked Questions](#)

Base Map Planimetric Download

Data Warehouse > County Data Download > Base Map Planimetrics

Base Map planimetric datasets were photogrammetrically derived from the county's 2004 base map project and meet National Map Accuracy Standards at 1"=100'.

Click dataset name for additional information (where available). Click shapefile and KMZ globes to download the zipped data files.

Countywide Base Map Planimetrics

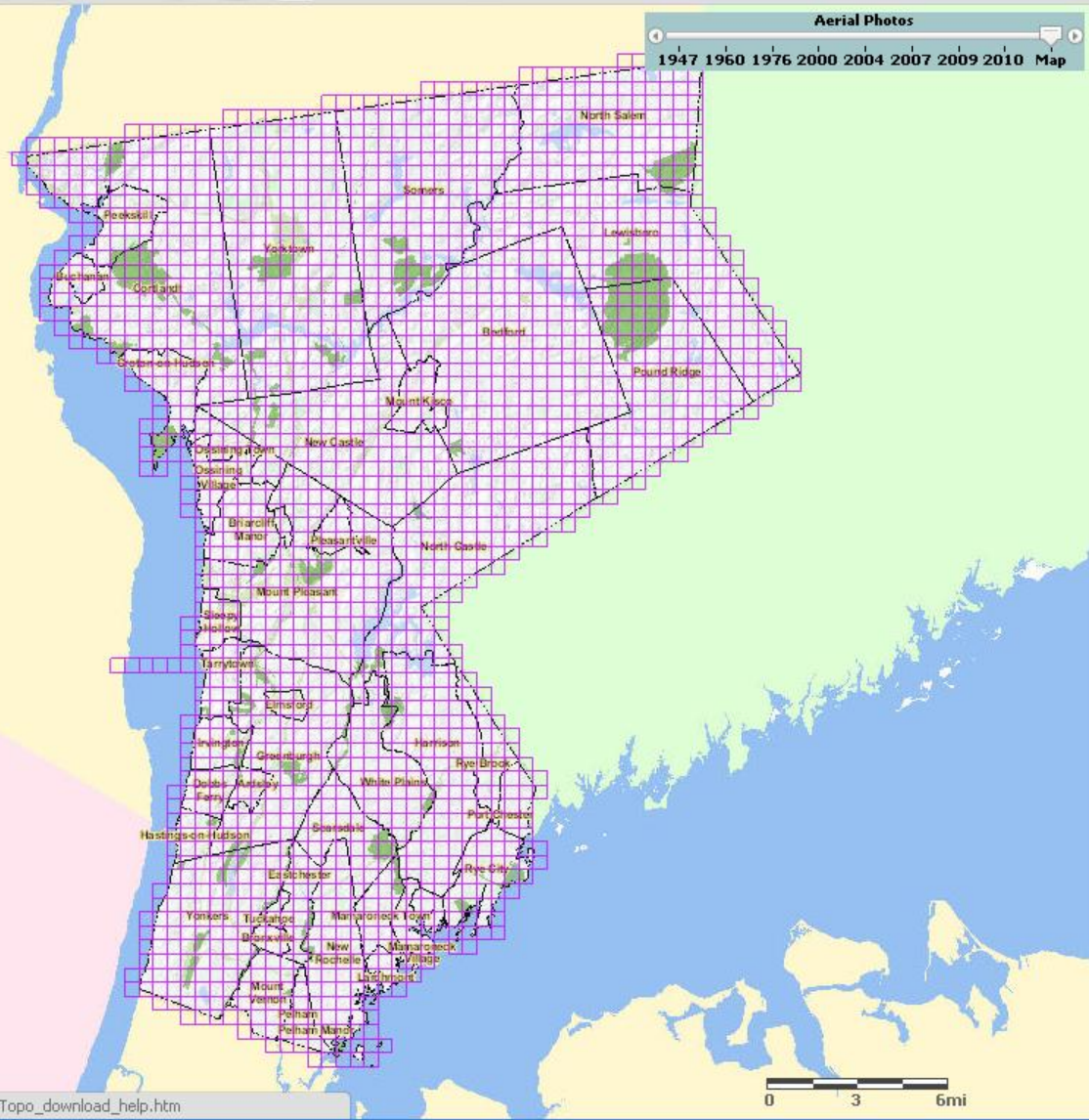
Dataset	SHP	KMZ
Rail Lines	143 KB	
Roads	10.4 MB	
Major Lakes and Reservoirs	2.09 MB	2.45 MB
Lakes and Reservoirs	9.4 MB	10.9 MB
Streams and Rivers	10.6 MB	
10' Contour Lines by USGS Quads	Download	
100' Contour Lines	48.9 MB	
Stone Walls	5.56 MB	

2004 Municipalwide Base Map Planimetrics

Street centerlines, structures, hydrography, transportation features and structures, rail lines and spot elevation feature classes are available by municipality. To browse and download the datasets, please select a municipality from the list below.

Ardsley	Larchmont	Pelham Manor
Bedford	Lewisboro	Pleasantville
Briarcliff Manor	Mamaroneck (Town)	Port Chester
Bronxville	Mamaroneck (Village)	Pound Ridge
Buchanan	Mount Kisco	Rye (City)
Cortlandt	Mount Pleasant	Rye Brook
Croton-on-Hudson	Mount Vernon	Scarsdale
Dobbs Ferry	New Castle	Sleepy Hollow
Eastchester	New Rochelle	Somers

Mamaroneck	2010	Download	738 KB	740 West Boston Post Road Mamaroneck NY, 10543 Phone: (914) 381-7820
Larchmont	2010	Download	287 KB	Mr. Daniel Whittmore 120 Larchmont Avenue Larchmont, NY 10538 Phone: (914) 834-6230
Mamaroneck (V)	2010	Download	607 KB	Mr. Lloyd T. Wright 123 Mamaroneck Avenue Mamaroneck NY, 10543 Phone: (914) 777-7720
Mount Kisco	2010	Download	443 KB	Mr. Roger D Miller 104 Main Street Mount Kisco NY, 10549 Phone: (914) 864-0006
Mount Pleasant	2010	Download	1.80 MB	Mr. James J. Timmings 1 Town Hall Plaza Valhalla NY, 10595 Phone: (914) 742-2315 Ext: 2345
Pleasantville	2010	Download	544 KB	Mr. James J. Timmings 80 Wheeler Avenue Pleasantville NY, 10570 Phone: (914) 769-1886
Sleepy Hollow	2010	Download	295 KB	Mr. Fred Gross 28 Beekman Avenue Sleepy Hollow NY, 10591 Phone: (914) 366-5156
Mount Vernon		Contact Assessor		Mr. Anthony V. DeBellis 1 Roosevelt Square Mount Vernon NY, 10550 Phone: (914) 665-2325
New Castle	2010	Download	3.26 MB	Mr. Philip M Platz 200 South Greeley Avenue Chappaqua NY, 10514 Phone: (914) 238-7266
New Rochelle	2010	Download	2.04 MB	Mr. Daniel T. Whittmore 515 North Avenue New Rochelle NY, 10801 Phone: (914) 654-2054
North Castle	2010	Download	1.72 MB	Ms. Victoria Sirota 17 Bedford Road Armonk NY, 10504 Phone: (914) 273-3324
North Salem	2010	Download	753 KB	Ms. Karen A. Futia-Kazmierczak 266 Titicus Road North Salem NY, 10560 Phone: (914) 862-5214
Ossining (Town/Village)	2010	Download	7.4 MB	Mr. Fernando Gonzalez 16 Croton Avenue Ossining NY, 10562 Phone: (914) 762-8274 Ms. Denise C. Krueger



Aerial Photos

1947 1960 1976 2000 2004 2007 2009 2010 Map

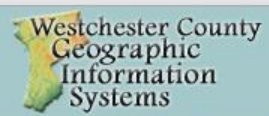
Search for a Location

Your search result

Thematic Map

Show Additional Data on Map

- Environmental Features**
 - 2 Foot Contours
 - 2-Foot Topo (Download Only) [link to download](#)
 - Aquifers**
 - >100 Gallons per Minutes [link to download](#)
 - 10-100 Gallons per Minutes
 - Citizen Water Monitoring Sites
 - County Channel Lines
 - County Sewage Treatment Plants
 - County Trail System**
 - Existing Off-Road Path
 - Existing Road Corridor Route
 - Original Aqueduct Route
 - Proposed Off-Road Path
 - Proposed Road Corridor Route
 - Wide Road Shoulder
 - Critical Environmental Areas
 - Digital Elevation Model**
 - 305
 - 260
 - 215
 - 170
 - 125
 - 80
 - 35
 - 10
 - Drainage Divides
 - Farms, Stables, Nurseries
 - Fish and Wildlife Habitats
 - Flood Plains



Mapping Westchester County

Help | Disclaimer



Aerial Photos

1947 1960 1976 2000 2004 2007 2009 2010 **Map**

Search for a Location

Your search result

Thematic Map

- Show Additional Data on Map**
- Two & Three Family and Multi-Structure Proper
 - Condominiums, Apartments & Multi-Family Res
 - Common Land Homeowners Assoc.
 - Vacant Properties
 - Commercial and Retail
 - Manufacturing, Industrial and Warehousing
 - Office and Research (including Campus Office
 - Mixed Use
 - Institutional and Public Assembly
 - Transportation, Communication and Utilities
 - Cemeteries
 - Public Parks and Parkway Lands
 - Private Recreation
 - Nature Preserves
 - Water Supply Lands
 - Interior Water Bodies
 - LIDAR Index (Download Only)
 - NYS Regulated Wetlands
 - Open Space
 - County Parklands
 - State Parklands
 - Local Parks
 - Nature Preserves
 - Private Recreation
 - Public Institutions
 - Private Institutions
 - Public Non-Park Lands
 - Cemeteries
 - Water Supply Lands



MAPPING WESTCHESTER COUNTY

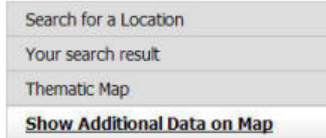
[View LiDAR Metadata](#)

[View More Information on LiDAR](#)

LiDAR Download Instructions (.las file format)

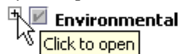
1. Make the Layer List Visible

Select the "Show Additional Data on Map" along the panel on the right side of the application.



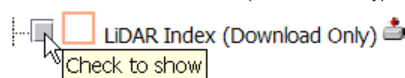
2. Expand the Environmental Category

Click the plus sign next to Environmental to expand the category.



3. Make LiDAR Layer Visible

Check the box next to LiDAR Index (Download Only) to make the layer visible.



4. Locate Area of Interest

Zoom to the area of interest using zoom in/out (+/-) or geocode tool (#A).

5. Download Tile

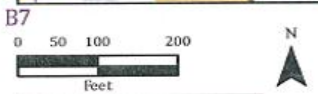
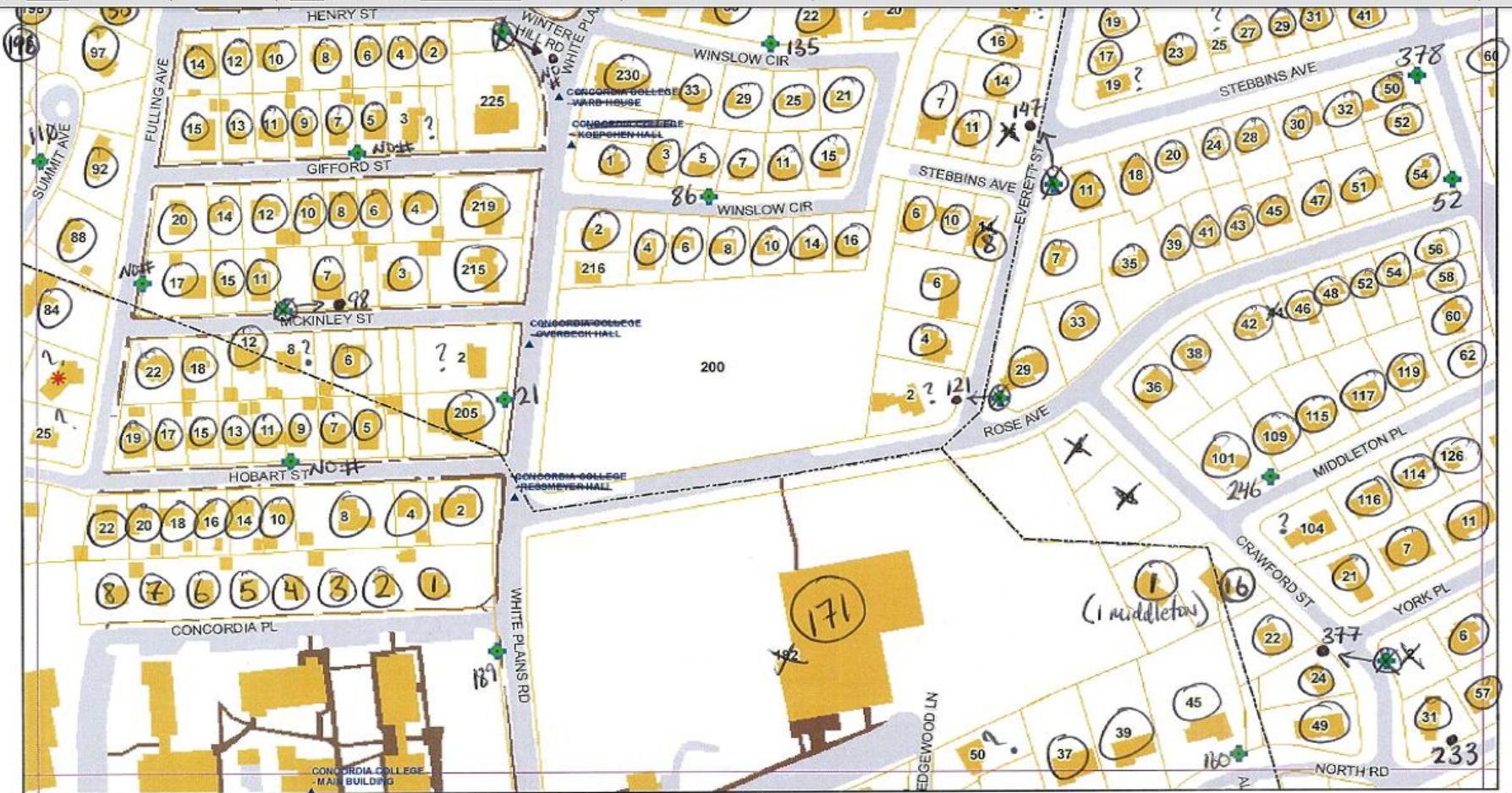
- Select the Identify tool (i).
- Select the desired tile.
- In the results box, click the hyperlinked Tile Number.
- Save zip file.

6. Repeat Step 5 Until All Desired Tiles Have Been Downloaded

OK

[LiDAR DISCLAIMER](#)

Hardcopy Products

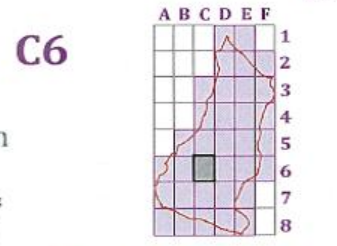


Eastchester Fire District

- Legend**
- + Hydrants
 - * Missing Addresses
 - ▲ Special Addresses
 - 123 Addresses
 - Municipal Boundaries
 - Map Pages
 - ▭ Fire District
 - ▭ Parcels
 - ▭ Buildings
 - ▭ Paved Roads, Parking
 - ▭ Sidewalks
 - ▭ Parks
 - ▭ Lakes

Westchester.gov.com

Michaelian Office Building
148 Martine Ave Rm 214
White Plains, NY 10601





Map Services

ArcGIS Services Directory

Folder: /

Current Version: 10.03

View Footprints In: [Google Earth](#)

Services:

- [2FtContours](#) (MapServer)
- [AffordableHousing](#) (MapServer)
- [Basemap_WGS1984_WebMercator](#) (MapServer)
- [CADWMS](#) (MapServer)
- [Census](#) (MapServer)
- [CommunityFeatures](#) (MapServer)
- [DigitalElevationModel](#) (MapServer)
- [DigitalSurfaceModel](#) (MapServer)
- [EnvironmentalFeatures](#) (MapServer)
- [Geometry](#) (GeometryServer)
- [InfrastructureFeatures](#) (MapServer)
- [Landuse](#) (MapServer)
- [Mapa_de_WestchesterCounty](#) (MapServer)
- [MappingWestchesterCounty](#) (MapServer)
- [MappingWestchesterCounty_AerialPhoto1947](#) (MapServer)
- [MappingWestchesterCounty_AerialPhoto1960](#) (MapServer)
- [MappingWestchesterCounty_AerialPhoto1976](#) (MapServer)
- [MappingWestchesterCounty_AerialPhoto2000](#) (MapServer)
- [MappingWestchesterCounty_AerialPhoto2004](#) (MapServer)
- [MappingWestchesterCounty_AerialPhoto2007](#) (MapServer)
- [MappingWestchesterCounty_AerialPhoto2009](#) (MapServer)
- [MappingWestchesterCounty_AerialPhoto2010](#) (MapServer)
- [MappingWestchesterCounty_Basemap](#) (MapServer)
- [MobileCommunityMap](#) (MapServer)
- [MunicipalTaxParcels](#) (MapServer)
- [Stormwater](#) (MapServer)
- [WestchesterCountyBaseMap_Light](#) (MapServer)

DigitalSurfaceModel (MapServer)

View In: [ArcMap](#) [ArcGIS Explorer](#) [ArcGIS JavaScript](#) [Google Earth](#) [ArcGIS.com Map](#)

View Footprint In: [Google Earth](#)

Service Description: Digital Surface Model: a one-meter-resolution countywide raster created from spring-2009 LiDAR 'first-returns'. Enhanced with a shadowed 'hillshade', uppermost surfaces of structures and landscapes are seen as 3-dimensional objects. The DSM can be used for planning and visualizations, for siting solar power installations, to analyze vegetation density, etc.

Map Name: Layers

[Legend](#)

[All Layers and Tables](#)

Layers:

- [Digital Surface Model Hillshade](#) (0)
- [Digital Surface Model](#) (1)

Tables:

Description:

Copyright Text:

Spatial Reference: 2260

Single Fused Map Cache: true

Tile Info:

- **Height:** 512
- **Width:** 512
- **DPI:** 128
- **Levels of Detail:** (# Levels: 13)
 - **Level ID:** 0 [[Start Tile](#), [End Tile](#)]
Resolution: 260.416666666667
Scale: 400000
 - **Level ID:** 1 [[Start Tile](#), [End Tile](#)]

EnvironmentalFeatures (MapServer)

View In: [ArcMap](#) [ArcGIS Explorer](#) [ArcGIS JavaScript](#) [Google Earth](#) [ArcGIS.com Map](#)

View Footprint In: [Google Earth](#)

Service Description: Environmental Features: protected areas, sensitive features (soils, wetlands, slopes, etc.), and state- or federally-regulated activities (i.e., wastewater discharge), on a basemap elevation model.

Map Name: Layers

[Legend](#)

[All Layers and Tables](#)

Layers:

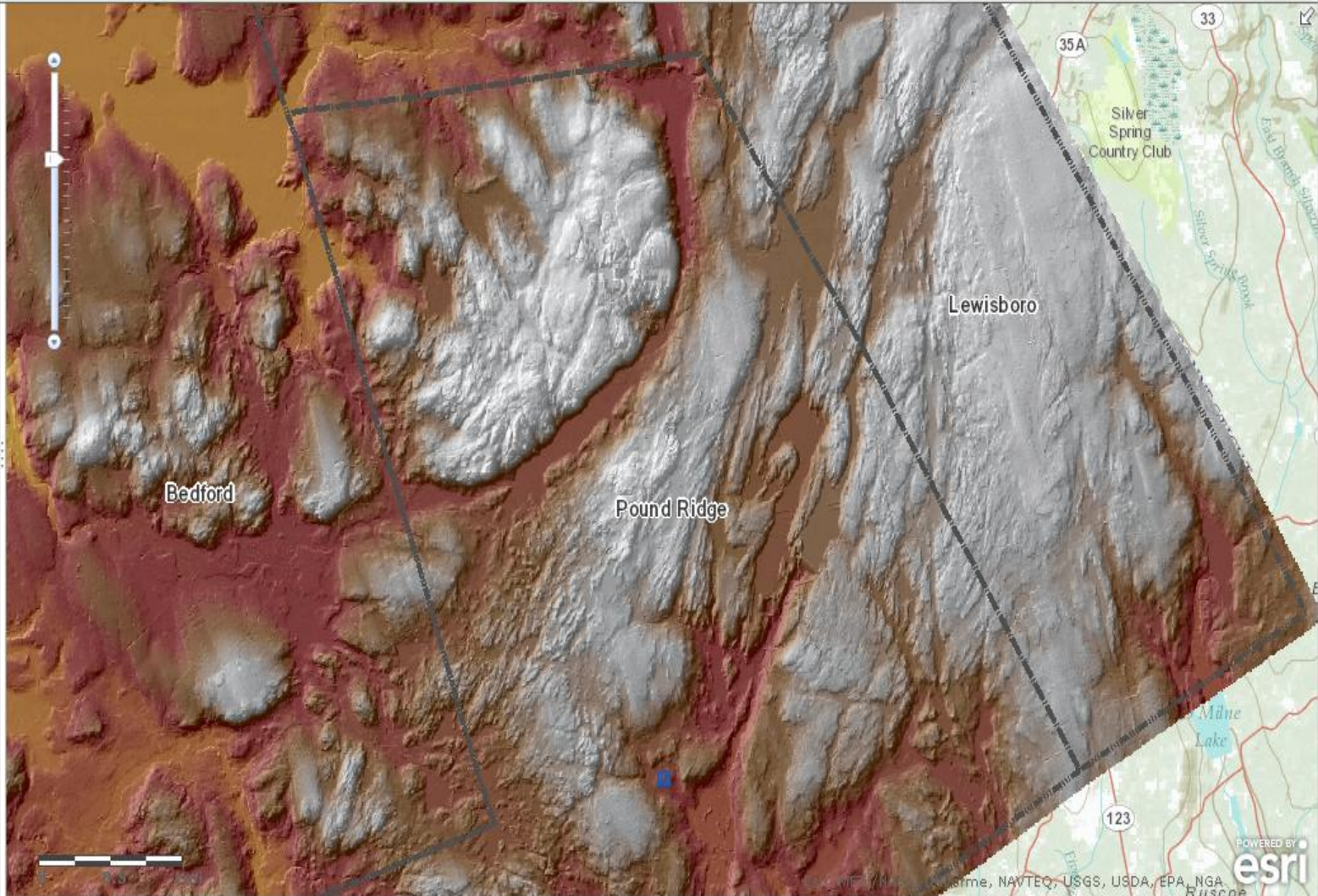
- [Hazardous Waste Sites](#) (0)
- [Sewage Treatment Facilities \(Private\)](#) (1)
- [SPDES Permits](#) (2)
- [Toxic Release Inventory \(EPA\)](#) (3)
- [Municipal Boundaries](#) (4)
- [Streams](#) (5)
- [Lakes](#) (6)
- [Generalized Zoning](#) (7)
- [Fish and Wildlife Habitats](#) (8)
- [Critical Environmental Areas](#) (9)
- [National Wetlands Inventory](#) (10)
- [Hydric Soil Wetlands](#) (11)
- [NYS Regulated Wetlands](#) (12)
- [Open Space](#) (13)
- [Tidal Wetlands](#) (14)
- [Aquifers](#) (15)
- [Floodplains](#) (16)
- [Steep Slopes](#) (17)
- [Drainage Basins](#) (18)
- [Major Watersheds](#) (19)

Details Add Basemap Save Share Print Measure Bookmarks Find address or place

Contents

- CommunityFeatures
- DigitalElevationModel
- Topographic

Esri.com | Terms of Use | Privacy | Contact Us | Report Abuse

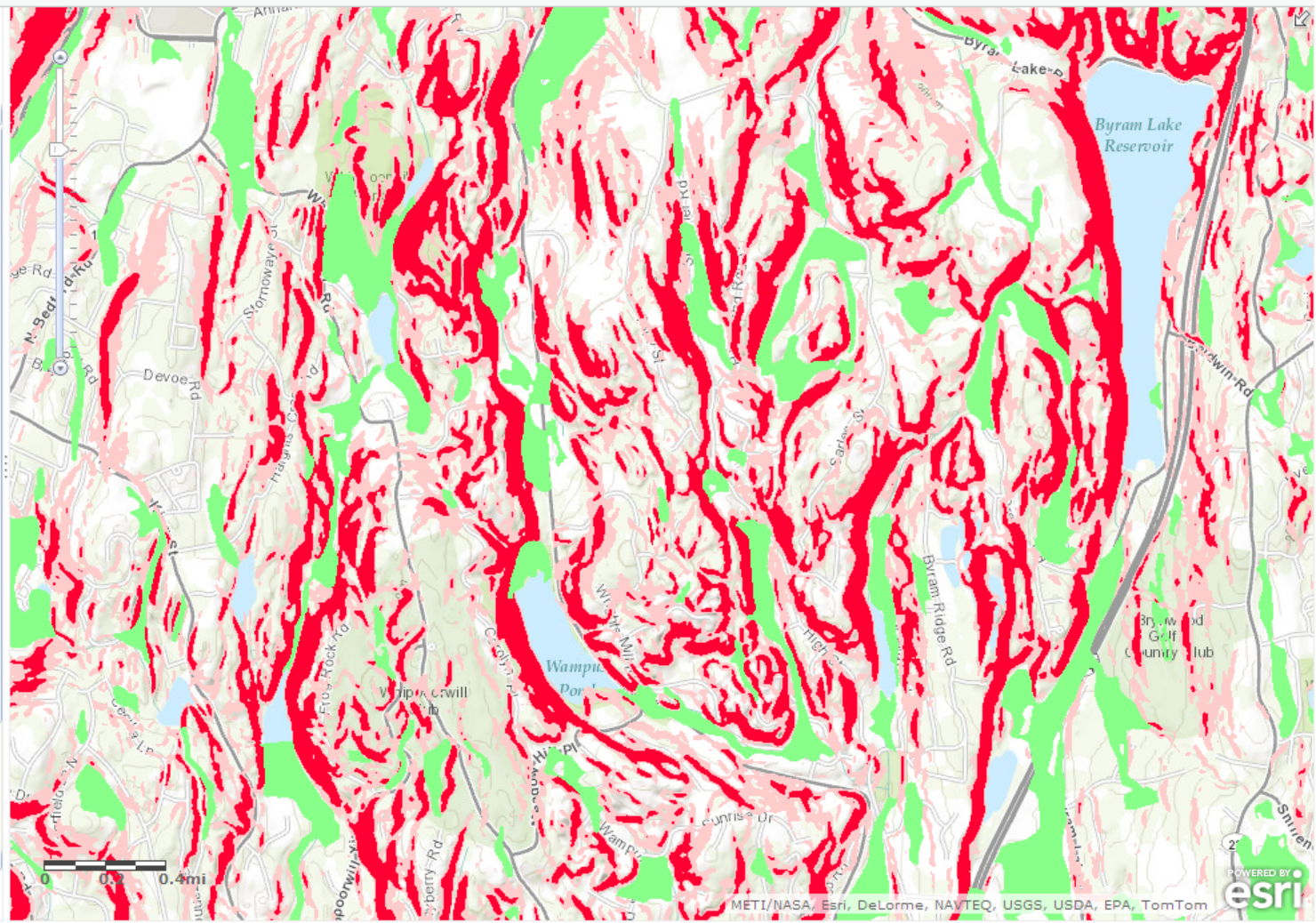


ArcGIS My Map

Details Add Basemap Save Share Print Measure Bookmarks

Contents

- EnvironmentalFeatures
 - Hazardous Waste Sites
 - Sewage Treatment Facilities (Private)
 - SPDES Permits
 - Toxic Release Inventory (EPA)
 - Municipal Boundaries
 - Streams
 - Lakes
 - Generalized Zoning
 - Fish and Wildlife Habitats
 - Critical Environmental Areas
 - National Wetlands Inventory
 - Hydric Soil Wetlands
 - NYS Regulated Wetlands
 - Open Space
 - Tidal Wetlands
 - Aquifers
 - Floodplains
 - Steep Slopes
 - Drainage Basins
 - Major Watersheds



Login

The information contained in this data is NOT to be construed as a legal description. The Town and its consultants do NOT provide any guarantee of accuracy or completeness and will NOT be held liable for any damages or losses due to its use.

The Town of Cortlandt

Legend Search More Info

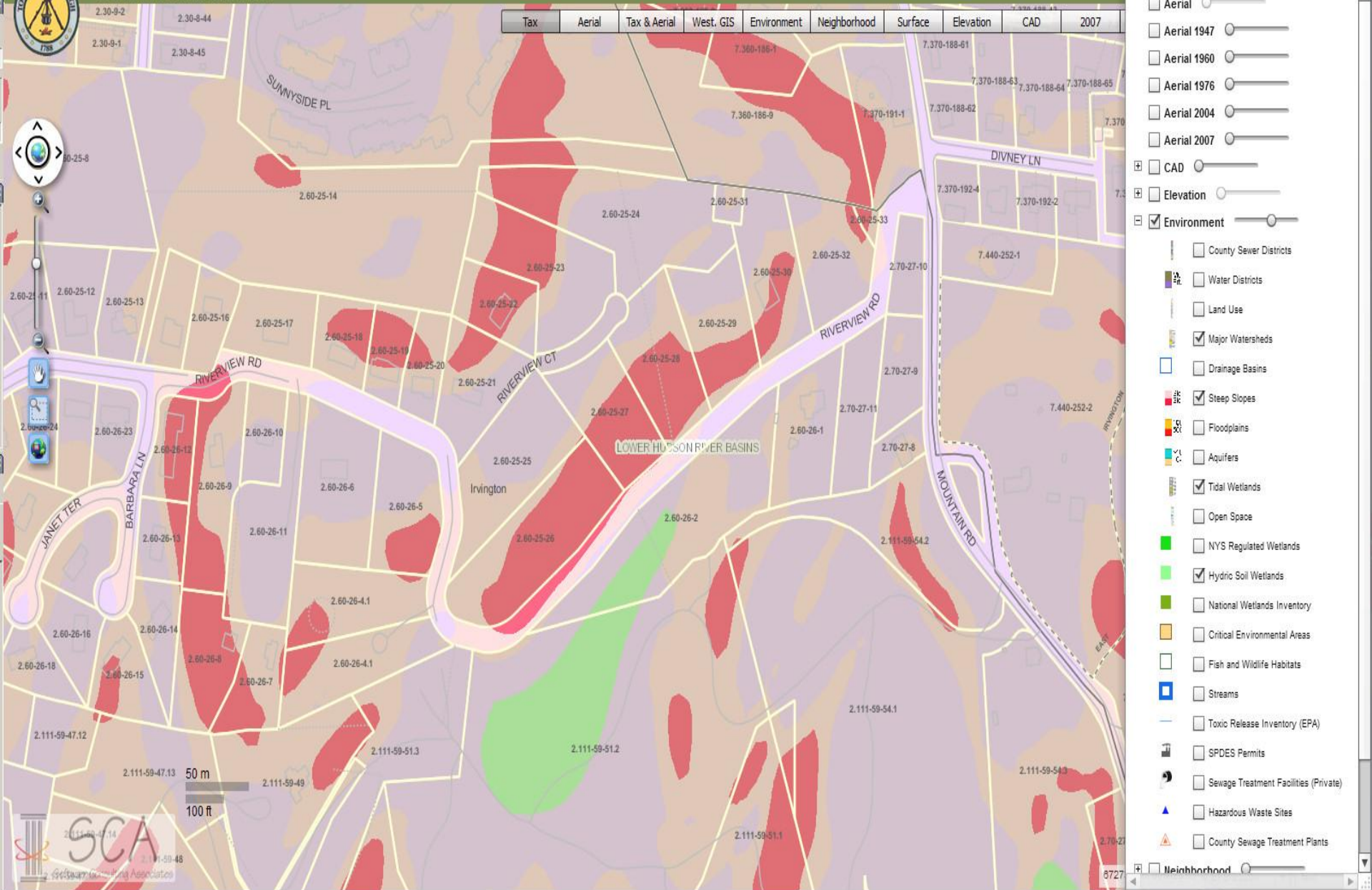
- Selected Parcels
- Layers
 - Parcels
 - Parcel Labels
 - Streets
 - Municipal
 - Districts
 - NaturalResources
 - Waterbodies
 - Watersheds
 - Watershed
 - Watershed - Full
 - Watershed - New Croton

Change Basemap

None 2004 2007 2009

Town of Greenburgh, NY
Geographic Information System (GIS)

search id abutters layers assets filter sketch measure full scr clear print



Tax	Aerial	Tax & Aerial	West. GIS	Environment	Neighborhood	Surface	Elevation	CAD	2007
-----	--------	--------------	-----------	-------------	--------------	---------	-----------	-----	------

Layers

- Aerial
- Aerial 1947
- Aerial 1960
- Aerial 1976
- Aerial 2004
- Aerial 2007
- CAD
- Elevation
- Environment
 - County Sewer Districts
 - Water Districts
 - Land Use
 - Major Watersheds
 - Drainage Basins
 - Steep Slopes
 - Floodplains
 - Aquifers
 - Tidal Wetlands
 - Open Space
 - NYS Regulated Wetlands
 - Hydric Soil Wetlands
 - National Wetlands Inventory
 - Critical Environmental Areas
 - Fish and Wildlife Habitats
 - Streams
 - Toxic Release Inventory (EPA)
 - SPDES Permits
 - Sewage Treatment Facilities (Private)
 - Hazardous Waste Sites
 - County Sewage Treatment Plants
- Neighborhood





NEW ROCHELLE



- The Property Portal is a collection of applications that allow us to streamline the delivery of a wide range of services.
- It facilitates convenient access to basic property information at no cost. Additional information is available to Registered Professional. [Learn more](#)

[Login](#) | [Register](#)

ONLINE INFORMATION PORTAL

[Online Portal](#) | [Applications](#) | [FAQ](#) | [Municipal Site](#)

Property Search

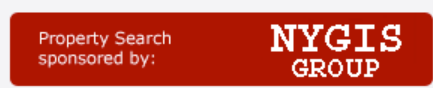
Use this tool to find...

- Block and lot numbers
- Property Assessment
- Ownership information
- Property card (Assessment), etc.

To begin, enter an address and click search

Block: **Lot:** [Adv. Search](#)

Maps are for general information only and cannot be used in lieu of a survey. [Full Disclaimer](#)



[Property Search](#)



[Permits & Approvals](#)



[Professional Registration](#)



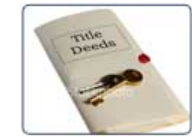
[Multiple Dwelling Registration](#)



[Radius Map](#)



[Title Search](#)



Mobile GIS

Apps for Smartphones and Tablets

Overview

Collector App

ArcGIS App

Windows 8 App

For Developers

System Requirements

Brochures/Articles/ Podcasts

Demos



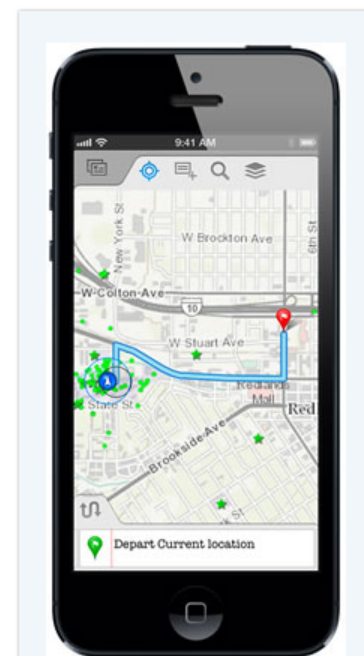
Collector App

Collector for ArcGIS improves your productivity with intuitive data collection. It's designed specifically for iPhone and Android smartphones.

- Capture, update, and report spatial and tabular information directly from your Android or Apple device.
- Plan routes and get directions.
- Improve your data quality with data-driven forms.
- Capture photos and video.
- Integrate information into your organization's GIS.
- Configure the app to fit your organization's workflow.

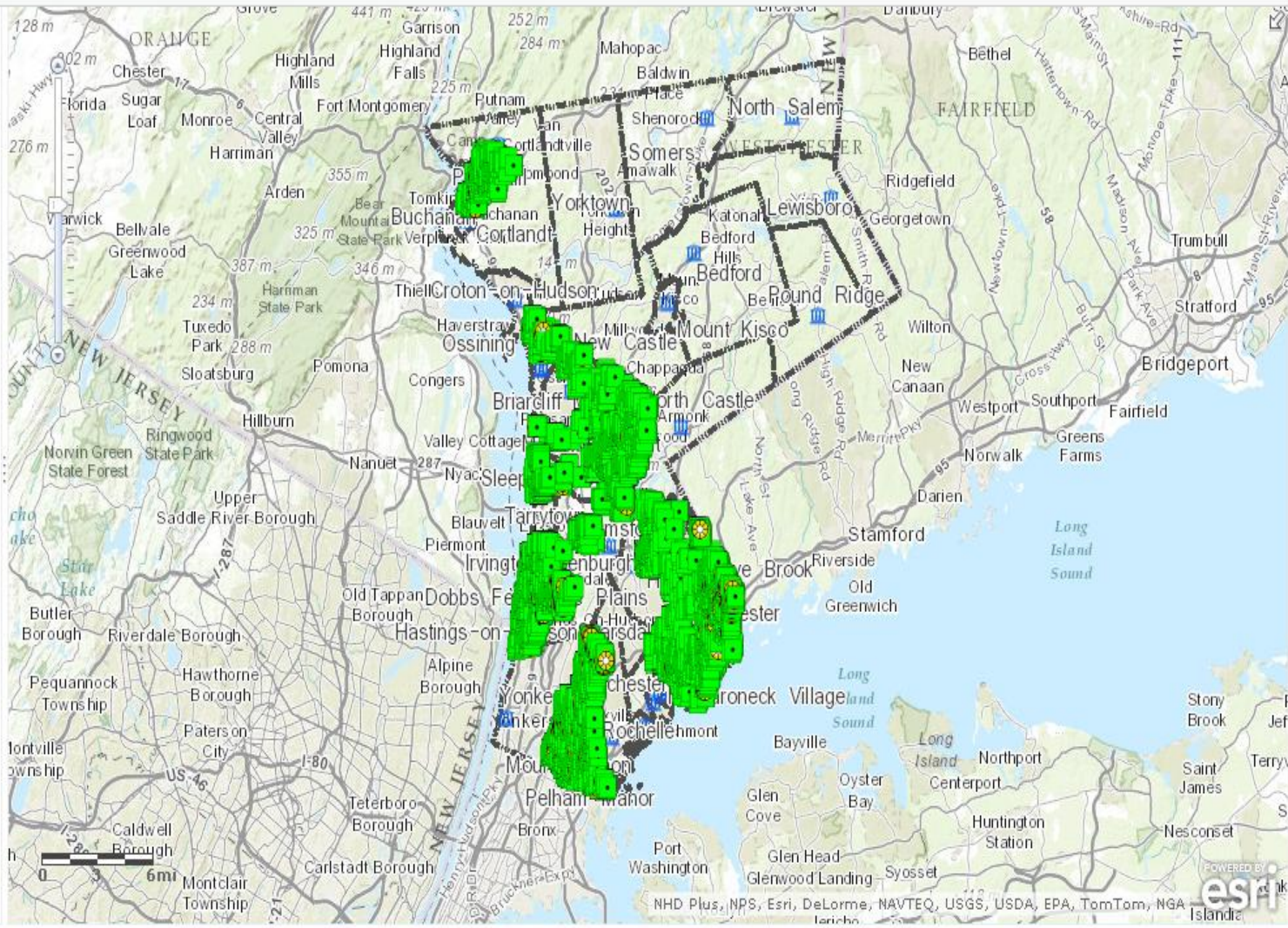
Data captured in the field using the Collector app can be displayed in an [Operations Dashboard](#).

Download the free Collector app from the [Apple App Store](#) or [Google Play](#) and [get started](#).



Plan routes and get driving directions with the Collector for ArcGIS app on your iPhone or Android smartphone.

- Contents
- MS4StormwaterDataViewer
 - MS4 Stormwater
 - Catch Basin
 - Drainage Manhole
 - Other
 - CommunityFeatures
 - MunicipalTaxParcels
 - EnvironmentalFeatures
 - MappingWestchesterCountyAerialPhoto2007
 - ESRI Topographic Map



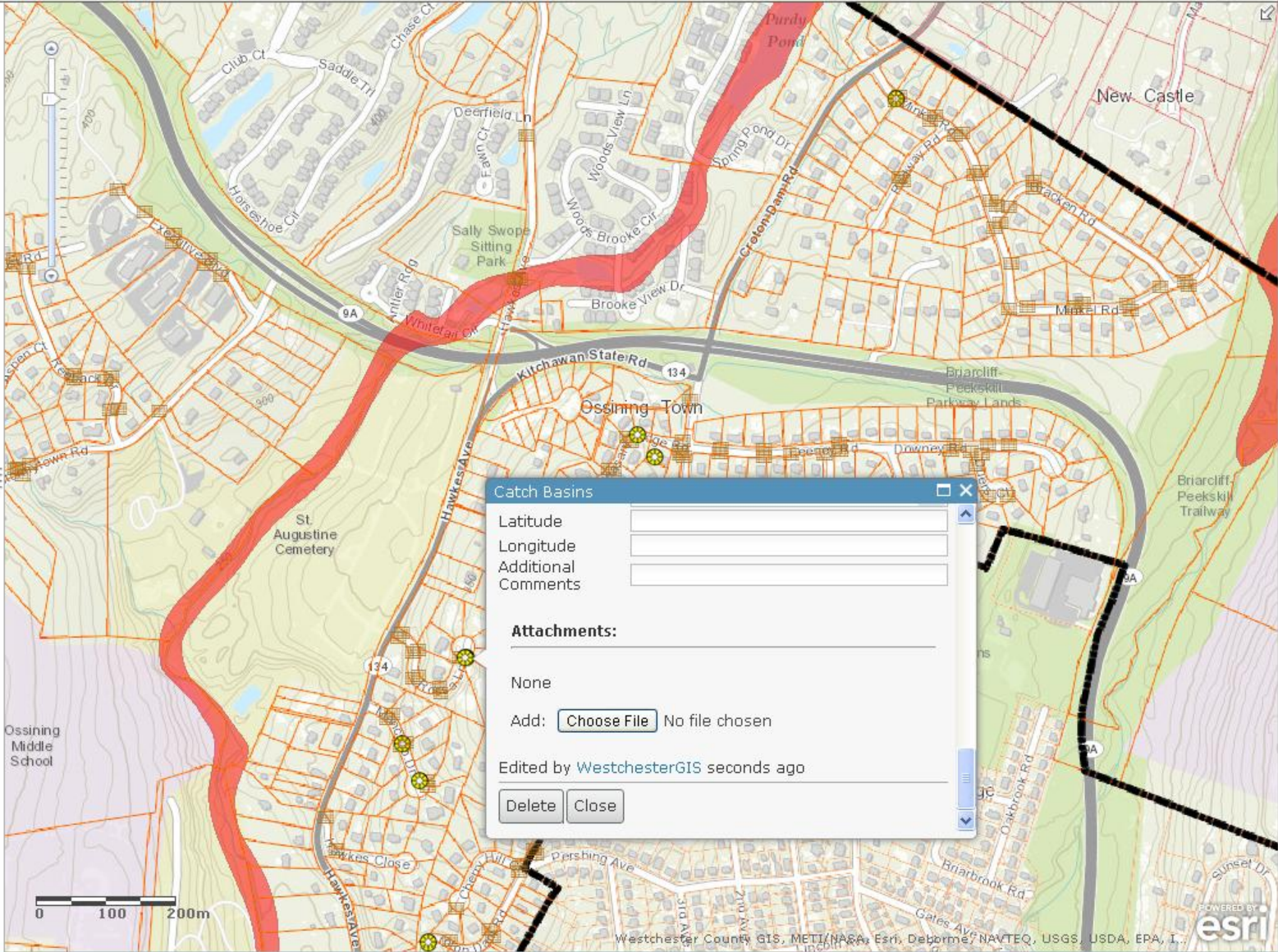
Add Features

Catch Basins

Drainage Manholes Catch Basins Other

Outfalls

Outfall



Catch Basins

Latitude

Longitude

Additional

Comments

Attachments:

None

Add: No file chosen

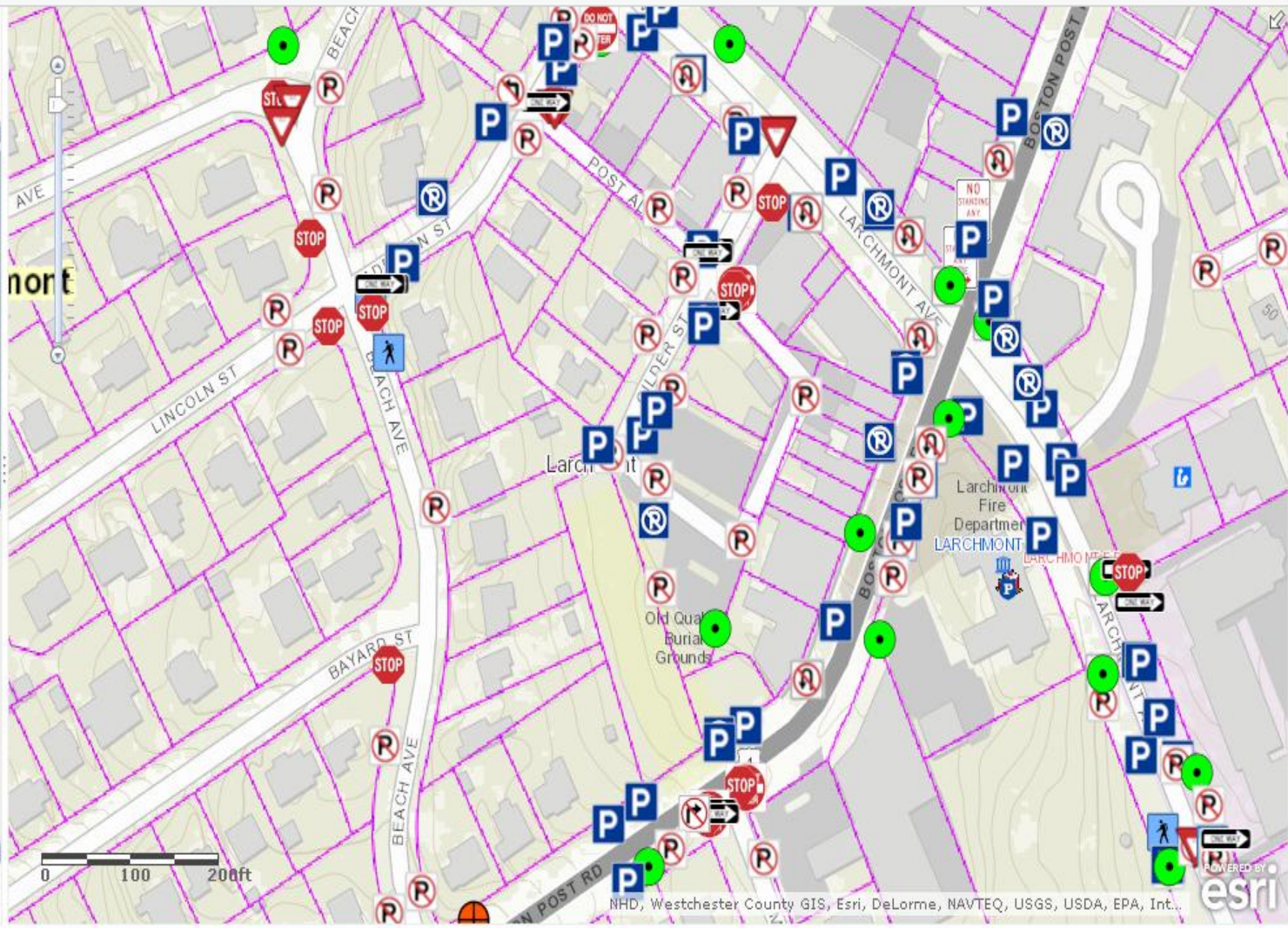
Edited by WestchesterGIS seconds ago

HOME Larchmont Sign Inventory

NEW MAP Sam

[Details](#)
[Add](#)
[Edit](#)
[Basemap](#)
[Save](#)
[Share](#)
[Print](#)
[Directions](#)
[Measure](#)
[Bookmarks](#)

- Contents
- Larchmont Sign Inventory
 - 4-WAY 4-Way
 - P Compact Car Parking
 - Crosswalk
 - Crosswalk W/Lines
 - Dead End
 - Do Not Enter
 - No Commercial Vehicles
 - No Dog Waste
 - No Dogs Allowed in Park
 - No Double Parking
 - No Left Turn
 - No Parking
 - No Parking 2AM-6AM \$50 Fine
 - No Passenger Vehicles
 - No Right Turn



HOME Larchmont Sign Inventory

NEW MAP Sam

Details Add Edit Basemap Save Share Print Directions Measure Bookmarks Find address or place

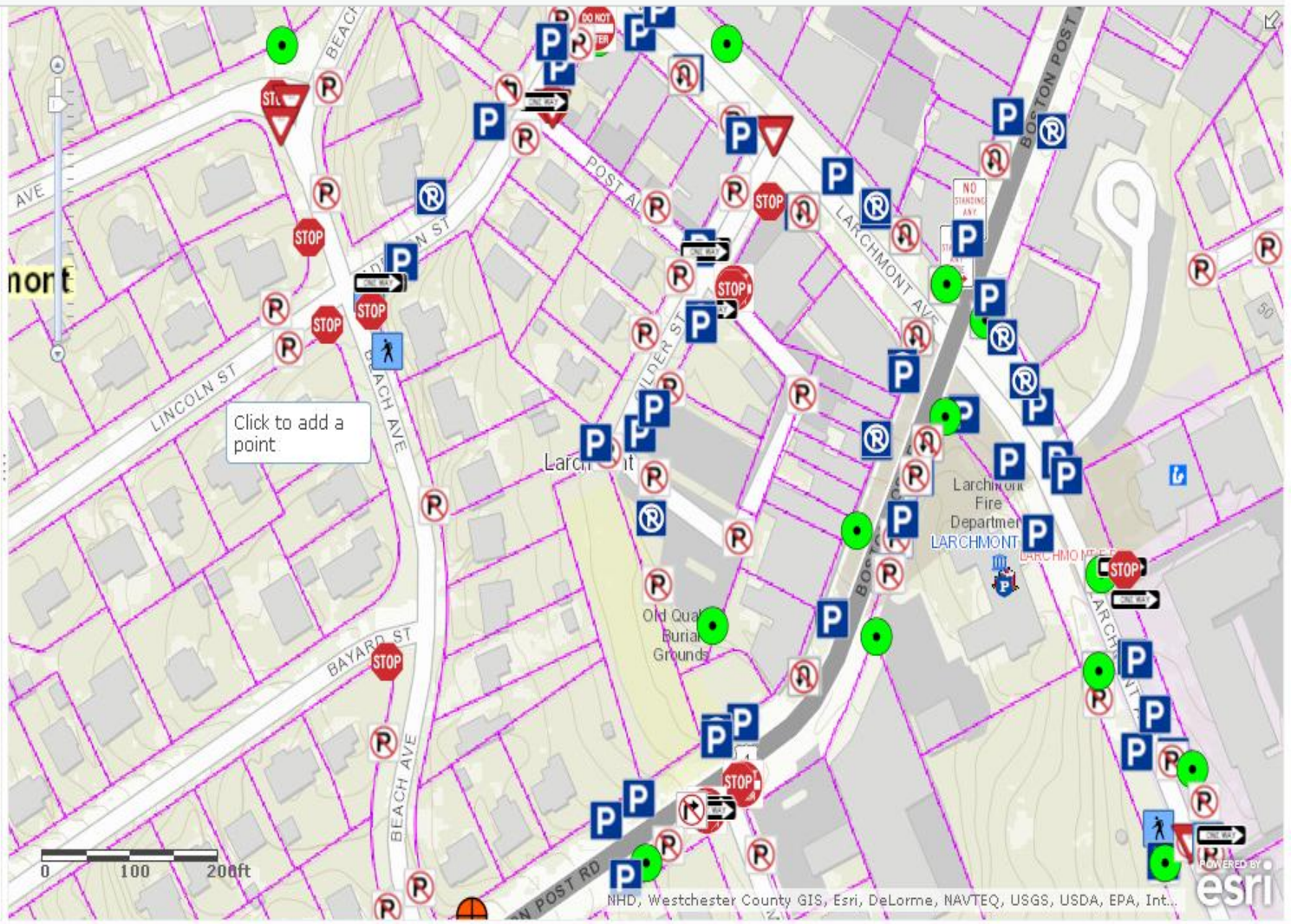
Add Features

Larchmont Sign Inventory

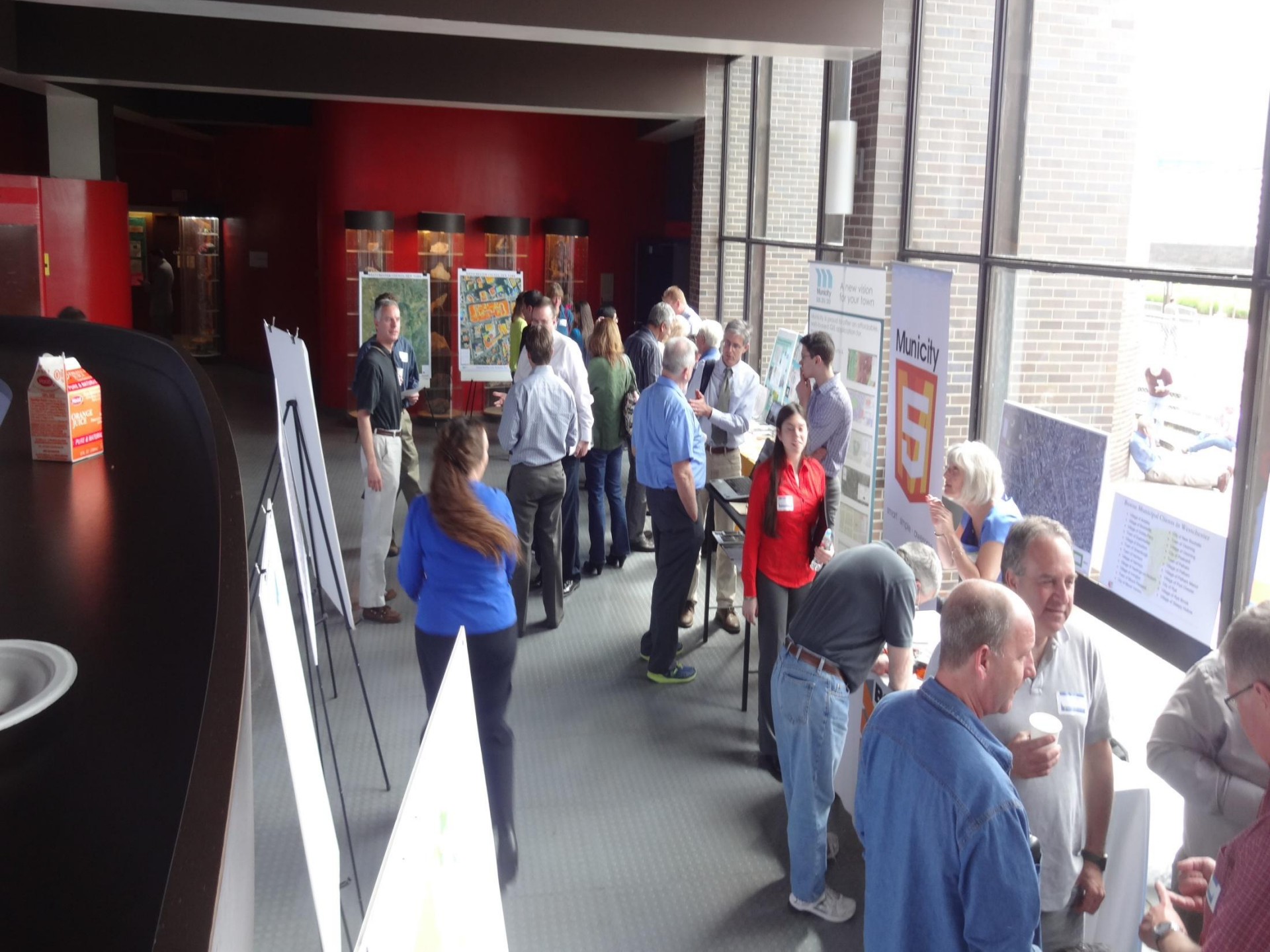
- No Right Turn
- No Double Parking
- Compact Car Parking
- No U Turn
- No Passenger Vehicles
- No Parking
- Yield
- No Dog Waste
- No Left Turn
- One Way
- No Standing
- No Stopping
- 4-Way
- No Dogs Allowed in Park
- Crosswalk W/Lines
- Regulatory
- No Commercial Vehicles
- Stop

UNDO REDO

Esri.com ArcGIS Marketplace Help Terms of Use Privacy Contact Us Report Abuse



Communication & Outreach



Municipity
A new vision for your town

Some Municipal Council Members

Name	Address
John Smith	123 Main St
Jane Doe	456 Elm St
Bob Johnson	789 Oak St
Alice Brown	101 Pine St
Charlie White	202 Cedar St
Diana Green	303 Birch St
Frank Black	404 Spruce St
Grace King	505 Willow St
Henry Lee	606 Ash St
Ivy Hill	707 Hickory St
Jack King	808 Walnut St
Karen White	909 Cherry St
Leo Green	1010 Maple St
Mia Black	1111 Poplar St
Noah King	1212 Sycamore St
Olivia White	1313 Dogwood St
Peter Green	1414 Magnolia St
Quinn Black	1515 Redwood St
Rachel King	1616 Cypress St
Sam White	1717 Juniper St
Tina Green	1818 Fir St
Uma Black	1919 Hemlock St
Victor King	2020 Spruce St
Wendy White	2121 Cedar St
Xavier Green	2222 Birch St
Yara Black	2323 Willow St
Zoe King	2424 Ash St
Adam White	2525 Spruce St
Bella Green	2626 Cedar St
Caleb Black	2727 Birch St
Dora King	2828 Willow St
Ethan White	2929 Ash St
Fiona Green	3030 Spruce St
Gavin Black	3131 Cedar St
Hannah King	3232 Birch St
Ian White	3333 Willow St
Jessica Green	3434 Ash St
Kyle Black	3535 Spruce St
Laura King	3636 Cedar St
Mason White	3737 Birch St
Nora Green	3838 Willow St
Oscar Black	3939 Ash St
Pamela King	4040 Spruce St
Quinn White	4141 Cedar St
Ryan Green	4242 Birch St
Sarah Black	4343 Willow St
Tyler King	4444 Ash St
Uma White	4545 Spruce St
Victor Green	4646 Cedar St
Wendy Black	4747 Birch St
Xavier King	4848 Willow St
Yara White	4949 Ash St
Zoe Green	5050 Spruce St



Westchester
gov.com

Robert P. Astorino, Westchester County Executive

DEPARTMENT OF INFORMATION TECHNOLOGY
313 Michaelian Office Building
148 Martine Avenue
White Plains, NY 10601

Westchester
gov.com

Robert P. Astorino, Westchester County Executive

Robert P. Astorino
County Executive
John B. McCaffrey
Chief Information Officer
Sam Wear
Assistant Chief Information Officer (GIS)
Department of Information Technology
Geographic Information Systems

**GEOGRAPHIC
I N F O R M A T I O N
S Y S T E M S**

Volume 17, Number 2

Fall 2013

Hiding in Plain Sight

Westchester County GIS Helps Identify Potential Farmland 30 Minutes Outside NYC

When you think of Westchester County, you probably don't think of it as a place with farms. It might surprise you then to know that according to the Department of Planning the county has 7,547 acres of land certified as farmland by the county's Agriculture & Farmland Protection Board (AFPB).

county land, and there is little chance of this getting larger due to the lack of a viable network or support system to encourage sustainable and successful farming.

and selected corporate and business parks were included in the initial mapping effort.

These farmlands are mainly for commercial horse boarding and other equine related activities, although the horticulture industry also has a strong presence. We have farms which grow fruit, vegetable and other crops follow and Christmas trees.

Enter GIS. In collaboration with the county-owned Hilltop Hanover Farm in Yorktown Heights, GIS staff are working to identify potential "farmland" opportunities across the county. The criteria developed by Hilltop Hanover staff includes variables such as designated agricultural soils, slopes, solar orientation, access to water, and those parcels two acres or larger. So as to identify potential partners in the program, only properties associated with educational, academic, medical, religious institutions,

County GIS staff used ArcGIS10.1 Desktop as the tool for the multi-step process which included several spatial queries such as attribute and spatial analysis, a relate and intersect between different data layers, and geometry calculations. Once the candidate list of eligible properties was generated, staff generated a Web map in ArcGIS.com to share with Hilltop Hanover staff. The Web map includes all relevant study layers, the Westchester County base map, digital surface models, and aerial photos.

But the farm lands, of course, just represent a small percentage (2.6%) of all

Now with a map that identifies nearly 5,000 acres of potential farmland, Hilltop Hanover can start to pursue potential land/lease agreements to get newly trained farmers working on farmland in the communities they live. The potential exists to have schools provide food to school cafeterias, hospitals with their own "farmers" helping to augment food for their patients and employees, and corporate parks having their own farm stands on-site.

"With so many site requirements and constraints which are incorporated into our analysis - and potentially so much land to cover, especially on such a broad county-wide scale - GIS software is a perfect fit in helping us identify potential small-scale farming locations," says Hilltop Hanover Farm director Lucille Munz. "We look forward to continued work with GIS staff as we continue to refine and add



Articles and graphics in this newsletter prepared by: Xiaobo Cui, Paul Gisondo, Ana Hiraldo-Gomez, Connor Lynch, Lucille Munz, Dongming Tang, Ilir Tota, Sam Wear, and Zhenglu Zhang.



Westchester County **GEOGRAPHIC INFORMATION SYSTEMS**
is published by the Westchester County Department of Information Technology

Robert P. Astorino, County Executive

John B. McCaffrey, Chief Information Officer

Local Government Geospatial Projects Continue to Expand

Westchester County GIS staff continues to work with local governments on a wide range of cost-effective geospatial projects. Over the past several months, meetings have been held with Buchanan, Peekskill, Yorktown, Mount Kisco, North Castle, New

Castle, Larchmont, Lewisboro, Ossining Town, and the City of Yonkers. Focusing on selected projects, GIS staff has been assisting the villages of Buchanan and Mount Kisco on mapping infrastructure systems, helping City of Peekskill staff on GIS

data development priorities, and the town of New Castle GIS committee on enterprise geospatial issues and tax map maintenance options. Both the towns of Lewisboro and Ossining assessor offices have requested County GIS staff input on alternative tax map maintenance options as well.

Many municipalities continue to use the county-developed and supported Tax Parcel Viewer as a means to make available local tax maps, show basic property information, and generate mailing labels as part of the abutters function. Recent GIS staff work also includes the design and publication of a hardcopy map book series for major infrastructure systems (sanitary sewer, storm water, and drinking water) for municipalities. The first series was completed for the Village of Croton and printed, at a cost to the village, at the county's Dept. of Information Technology print shop.

County staff also continue to provide assis-



Final Thoughts

- Local government administrators/decision-makers much more informed/comfortable with shared services or Cloud concepts
 - Significant reduction in government workforce
 - One of few options available for governments with no GIS capacity to date
 - Return on Investment (ROI): Both obvious (software, infrastructure, app development, DUPLICATION)
- Geospatial technology perfect fit for *local* multi-government, centralized geospatial programs
 - Focus on data sharing / data development/maintenance \$\$
- Other efforts / examples emerging across the state

Questions

Sam Wear

<http://giswww.westchestergov.com>

914-995-3047

www.espatiallynewyork.com

#espatiallyNY