



**Lewis**

**Cloud**

**County**

**Applications**

**Russ Brownell**  
**Tax Map Technician**  
**Lewis County Real Property**  
**7660 State St.**  
**Lowville, NY 13367**  
**(315) 376-5336**  
**[rbrownell@lewiscountyny.org](mailto:rbrownell@lewiscountyny.org)**

**Mickey Dietrich, GISP**  
**GIS Specialist**  
**Tug Hill Commission**  
**317 Washington St.**  
**Watertown, NY 13601**  
**(315) 785-2380**  
**[mickey@tughill.org](mailto:mickey@tughill.org)**

# Lewis County Cloud Applications

*Lewis County had Bergmann Associates customize an ArcIMS website for them*

*This ran for about four years, before it looked like ArcIMS would become obsolete*

*Due to cost Lewis County could not afford to migrate to a Cloud Server application*

**Enjoy the show!!!**

*A pilot project was formed with GIS Cloud for the Tug Hill Region*

*The first Lewis County application was created and hosted by the Tug Hill Commission in the Spring of 2013*

*The Lewis County application was then transferred to over to Lewis County in July 2013*

*A demonstration was done for different Lewis County departments following this*



# Ability to Share Public and Private Maps

Public Map Viewer

Planning

GIS Cloud blog

- Meet us in California! 2 days ago
- Volcano locations are closely linked to Tectonic plates 7 days ago
- Special Offer – Mobile Data Collection Facts 11 days ago
- GIS Cloud Publisher for ArcMap 18 days ago
- Nighttime Lights USA 21 days ago

## Video Channel



Special Offer Videoblog 23 days ago



**Public**

Lewis County, NY  
Owner: Me  
Modified: 3 hours ago

**Private**

Map for Donna Loucks  
Owner: Me  
Modified: a day ago

**Private**

Map for Ed  
Owner: Me  
Modified: 25 days ago

**Private**

Recreational Map  
Owner: Me  
Modified: a month ago

**Private**

Lewis County Utilities  
Owner: Me  
Modified: 25 days ago

Private Map for Lewis County Recreational Trails

Private Map for Lewis County Highway





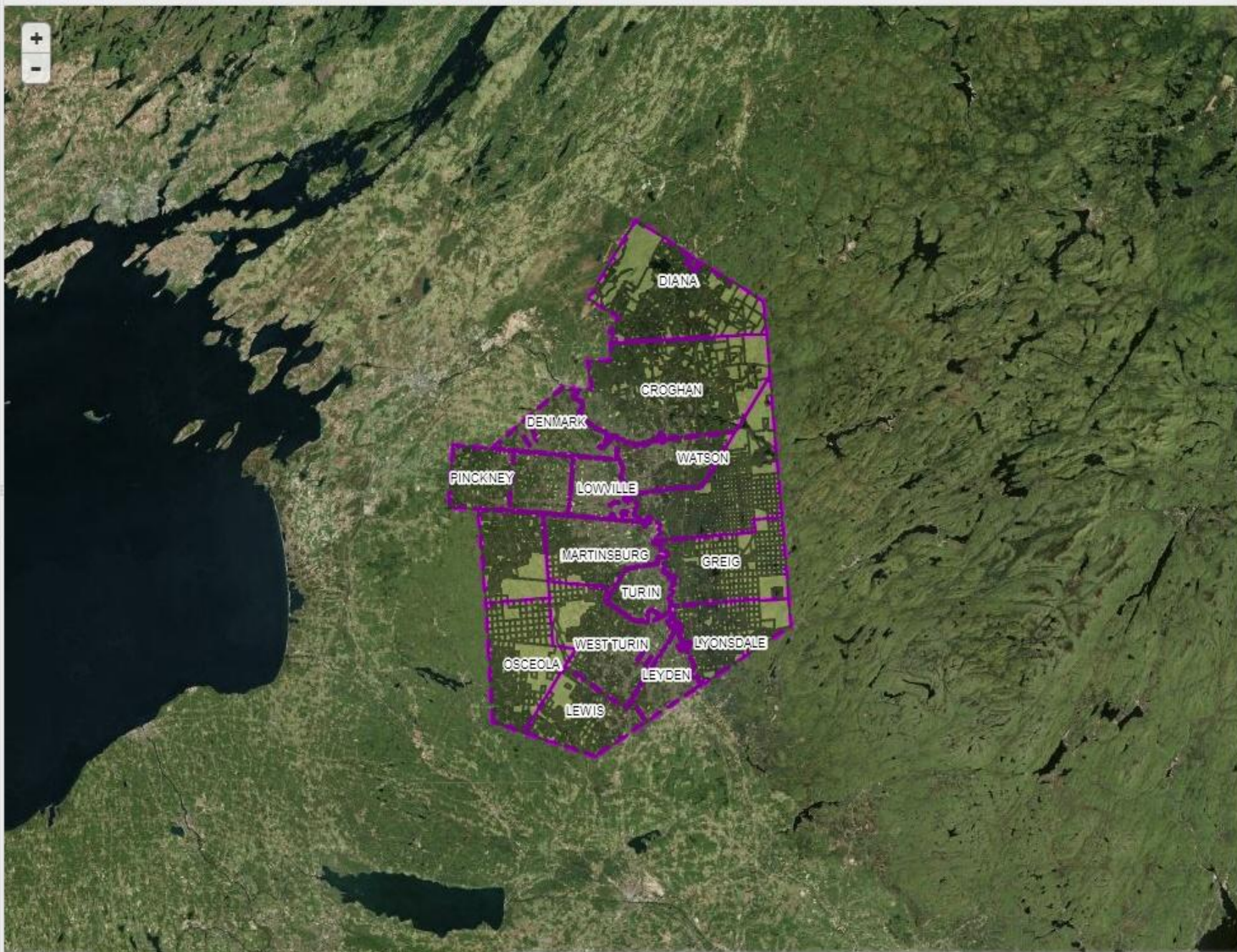
# GIS Cloud Capabilities

- File Manager
- Database Manager
- Datasource Manager
- Forms Manager
- Projection Wizard
- Merge Wizard
- Address Models
- Geocoder

Lewis County, NY

1:352223 -76.7999, 44.4612

- Adirondack Park (1)
- Cable Availability (3)
- Community Cultural Organizations (2)
- County Owned Lands (92)
- Filed Survey Maps (47,656)
- FIMA 100 Year Flood Plain (32)
- Fort Drum (1)
- Highway Appropriations 2013 (396)
- Lewis County Agricultural District (8,149)
- Lewis County APA Wetlands (6,643)
- Lewis County Centerlines (1,983)
- Lewis County DEC Wetlands (987)
- Lewis County Election Districts (31)
- Lewis County Federal Wetlands (7,188)
- Lewis County Fire Districts (20)
- Lewis County Flood Zones (32)
- Lewis County Great Lots (3,206)
- Lewis County Parcel Data (25,227)
- Lewis County Planning Department
- Lewis County Reforestation Area Details (944)
- Lewis County School Districts (39)
- Lewis County Town Boundaries (28)
- Lewis County UnPlowed Roads 2013 (1,043)
- Lewis County Village Boundaries (9)
- Lewis County Watershed Areas (7)
- Lewis County Zip Codes (25)
- Lewis County Zoning 2013 (261)
- NYS Lands (1,357)
- Massena Marcy Transmission Line Maps (776)
- Mobile Wireless Availability (1)
- Nature Conservancy (39)
- Recreational Trails Lewis County
- Soil Types (87)
- Wildlife Management Units in Lewis County (7)
- Bing Maps Satellite
- Bing Maps



# Share Data Layers

ID	Name	Type	Owner	EPSG	
708	west_carthage_culverts_t	Table	tughill_micke	2261	
903	wmus_lewis_county	Table	You	32016	
903	lewis_county_zoning	Table	You	32016	
903	emergency_response	Table	You	4326	<a href="#">Edit</a> <a href="#">Share</a> <a href="#">Delete</a>
907	NYS GIS Orthoimagery	WMS	You		
907	lewis_county_tax_parcel	Table	You	32016	
910	Weather Alert	WFS	You	4326	
935	recreational_culverts	Table	You	4326	
935	recreational_bridges	Table	You	4326	
935	recreational_kiosks	Table	You	4326	



[Add Table](#) [Add TMS](#) [Add WMS](#) [Add WFS](#) [Add WMTS](#)

### Share datasource

Share with the  [Share](#)

Who has access

tughill\_mickey READ, EDIT ↕

[Close](#)



# Mobile Data Collection Capabilities

