

How Do I Use Geospatial Technology on a Budget?

Mickey Dietrich, GISP
GIS Specialist
NYS Tug Hill Commission
317 Washington St.
Watertown, NY 13601
(315) 785-2389
mickey@tughill.org



November 13th – 14th • Saratoga Springs, NY

Overview

- What tools do I need?
- If a platform lacks a function or two, is it worth the extra cost?
 - What are the alternatives?
 - Will I have flexibility?
 - Are you new to GIS?
- Utilize existing resources out there?
- Is there potential for ELAs or sharing?
 - Wording of RFPs



November 13th – 14th • Saratoga Springs, NY

Desktop GIS



November 13th – 14th • Saratoga Springs, NY

ArcGIS Explorer - My Default Map

Presentation Home Display

Start Presentation Presentation Edit Presentation Presentation Find Route Measure Find

Folder View Link Create Point Line Area Arrow Target Circle Rectangle Arrow


Basemap Layer Add Content Analysis Search Window Contents Window Map

Manage Layers Copy to Clipboard Zoom To 2D/3D

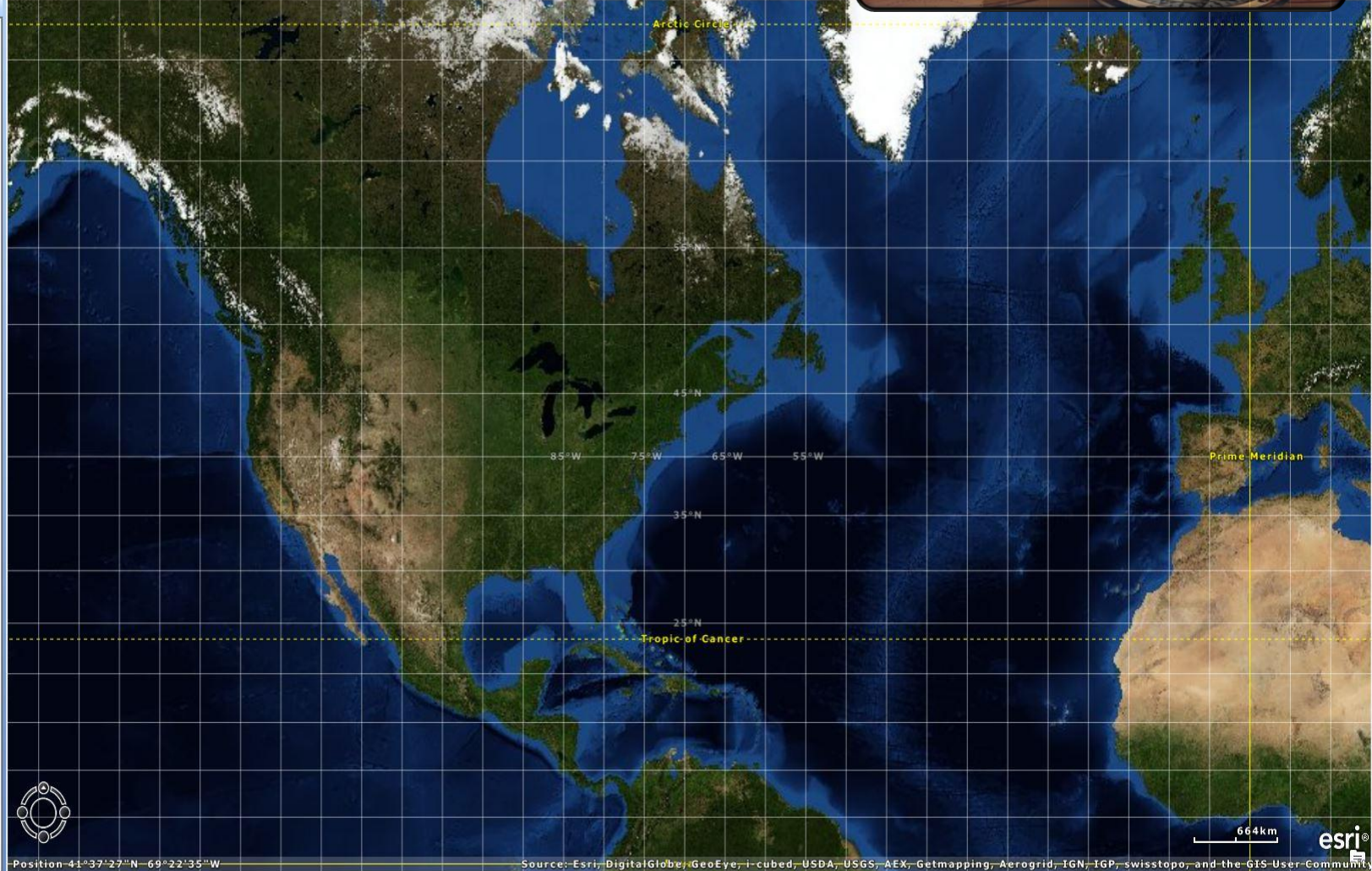
ArcExplorer

Contents

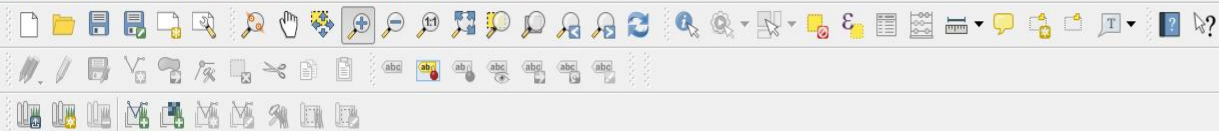
- Basemap (Imagery)



Position 41°37'27"N - 69°22'35"W



Vector Support	★★★★★	Basemaps	★★★★★	Map Layout	★★★★★
Raster Support	★★★☆☆	Tools	★★★☆☆	Labeling	★★★★★
Online Services	★★★★★	Mobile	★★★☆☆	Cost	★★★★★



Layers

- SimplifiedStreetSegment
- relief3

Layers Browser

Coordinate Capture

Start:

Stop:

Criterion: Length

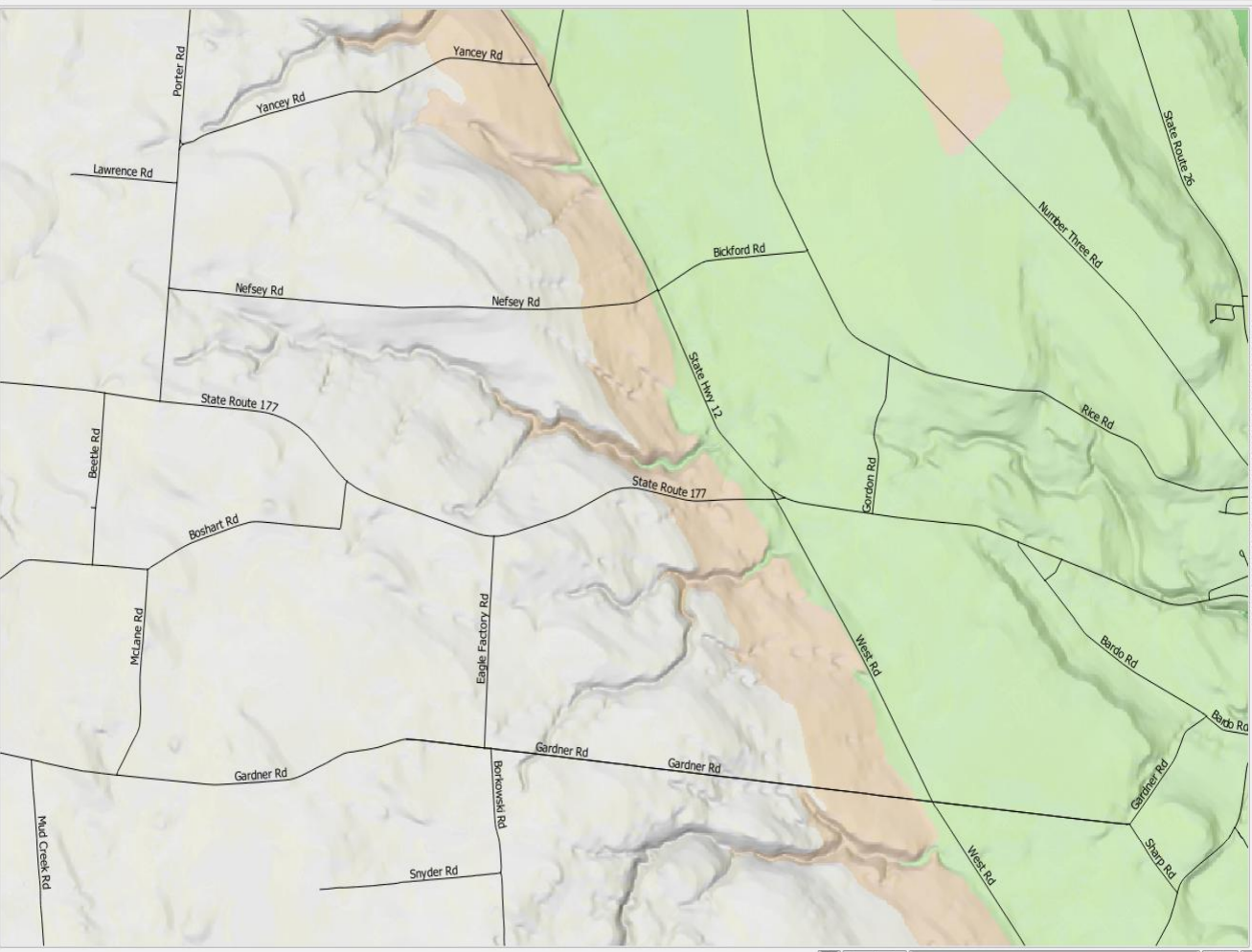
Length:

Time:

Calculate Export Clear

Help

Shortest path



Processing Toolbox

Search...

- Geoalgorithms
- Models
- Scripts

Simplified interface

Coordinate: 453646,4851552 Scale: 1:28033 Render EPSG:26718

Vector Support ★★★★★

Raster Support ★★★★★

Online Services ★★★★★

Basemaps ★★★★★

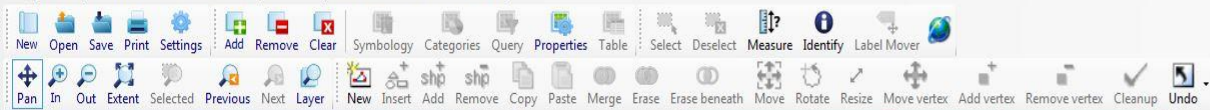
Tools ★★★★★

Mobile ★★★★★

Map Layout ★★★★★

Labeling ★★★★★

Cost ★★★★★



Legend

- Layers
- Toolbox
- Projections
- Vector Operations
 - Standard
 - 3D vector to 2D vector
 - Aggregate shapes
 - Buffer Shapes
 - Calculate Polygon Areas
 - Create Centroids
 - Interactive clipping
 - Dissolve by Attribute
 - Explode Shapes
 - Export Selection
 - Fix up Shapefile
 - Merge Shapefiles
 - Simplify Lines
 - Sort Shapefile
 - Spatial Query
 - Validate Shapefile
 - Overlays
 - Old tools
 - Database Tools
 - Image Operations
 - Raster
 - Assign Projection to Grids
 - Reproject Grids
 - Change Grid Formats
 - Create Grid Images
 - Resample Grids
 - Merge Grids
 - Generate a Contour Shapefile
 - Change Nodata Value
 - Spatial Analyst
 - Statistical Analysis
 - Zonal Overlay Statistics
 - Raster Processing tools
 - Clip Grid with Polygon
 - Polygonize Grid
 - GDAL/OGR
 - GDAL
 - GDAL Formats
 - GDAL Info
 - Translate raster

No tool is selected.



MapWinGIS 4.8

WGS 84 | Lat: 50.608 | Long: -98.427

1:16837655

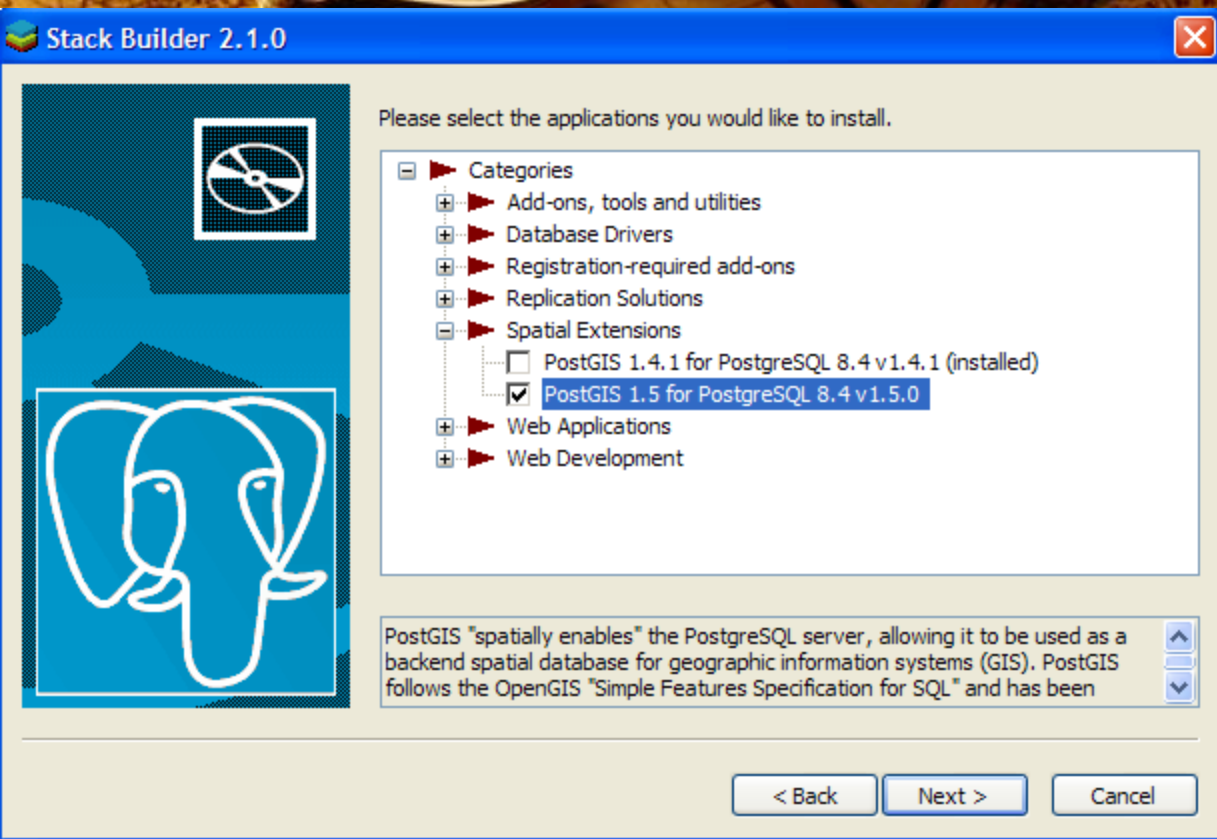
Vector Support	★★★★☆	Basemaps	★★★☆☆	Map Layout	★★★★☆
Raster Support	★★★★☆	Tools	★★★★☆	Labeling	★★★★☆
Online Services	★★★★☆	Mobile	★★★☆☆	Cost	★★★★★

Databases



November 13th – 14th • Saratoga Springs, NY

PostGIS



PostGIS

- Editing/Viewing Capabilities for Multiple Platforms
 - Flexibility
- Good Data Storage Option
- Backend For Multiple Online Applications
- Free/Low Cost

A vintage-style world map in shades of brown and gold. A magnifying glass is positioned in the upper left, focusing on the map. In the lower right, there is a detailed compass rose with cardinal and intercardinal directions labeled (N, NE, E, SE, S, SW, W, NW). The map shows continents and oceans with various geographical labels.

GIS Cloud Solutions



November 13th – 14th • Saratoga Springs, NY

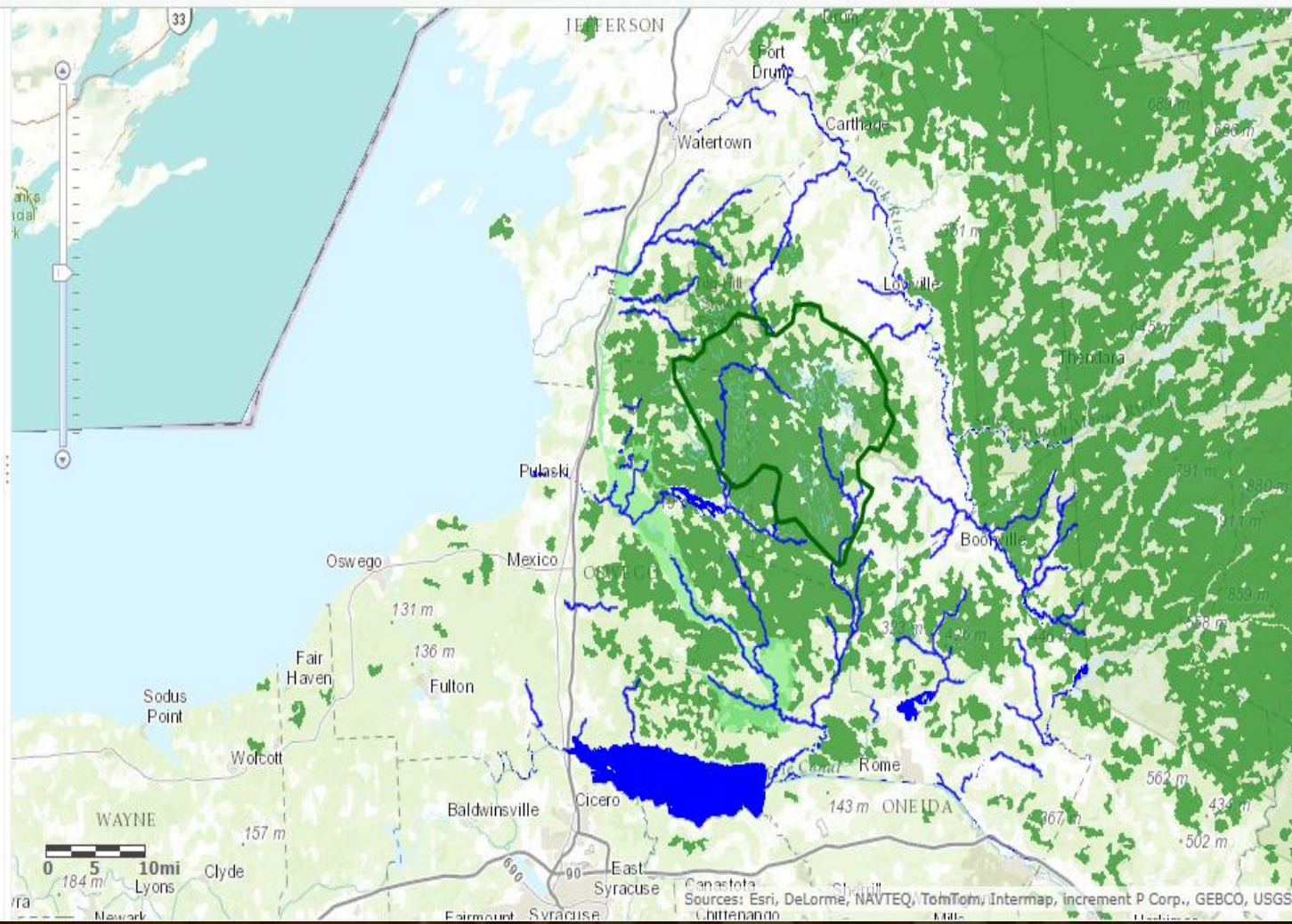


Details Add Edit Basemap Save Share Print Measure

About Content Legend

Contents

- Core Forest Boundary
- Major River and Stream Corridor
- Important Historic Area New York State Register
- Important Historic Area National Register
- Important Headwater Area
- Significant Natural Communities (IHA)
- Rare Animal and Plant Species (IHA)
- Important Bird Area (IHA)
- Important Groundwater
- Gulf
- Major Waterbodies
- Large Contiguous Forest Area
- Topographic



Esri.com ArcGIS Marketplace Help Terms of Use Privacy Contact Us Report Abuse

Cost (5 Users \$2,500, 50 Users \$10,000, 100 Users \$17,500, & Credit Fees)
Hard Comparing – Complex Credit Fees and Choices.
Social Media Integration, ArcGIS Compatibility, Etc.

Lewis County, NY

1:88056 -75.6079, 43.6167

- Adirondack Park (1)
- Cable Availability (3)
- Community Cultural Organizations (4)
- County Owned Lands (93)
- FEMA 100 Year Flood Plain (32)
- Fort Drum (1)
- Lewis County Centerlines (1,984)
- Lewis County Great Tracts and Purchases
- Lewis County Highway Appropriations (472)
- Lewis County Neighborhood Codes (75)
- Lewis County Parcel Data (25,227)
- Lewis County Planning Department
- Lewis County Reforestation Area Details (5)
- Lewis County Special Districts
- Lewis County Stream Classification (4,075)
- Lewis County Town Boundaries (26)
- Lewis County Unplowed Roads (1,044)
- Lewis County Village Boundaries (9)
- Lewis County Watershed Areas (7)
- Lewis County Wetland Inventory

MONTAGUE MARTINSBURG GREIG TURIN

Hey, we have new stuff available!

Cost (Free (Limited), Editor \$55/Month, Viewer \$15/Month, Mobile Data Collecting \$20/Month), Map Portal \$95/Month)

Analysis Tools, Database Included, Share Datasets, Form Creator, Create WMS, Database Manager, Flexibility, Importing & Exporting Data Options, Licensing, Apps, ArcMap Publisher, Etc.

A vintage-style world map with a magnifying glass and a compass rose. The map is aged and yellowed, with various geographical labels and a grid of latitude and longitude lines. A magnifying glass is positioned in the upper left, focusing on a specific area. A compass rose is in the lower right, showing cardinal and intercardinal directions. The text 'Web Solutions' is centered over the map.

Web Solutions



November 13th – 14th • Saratoga Springs, NY

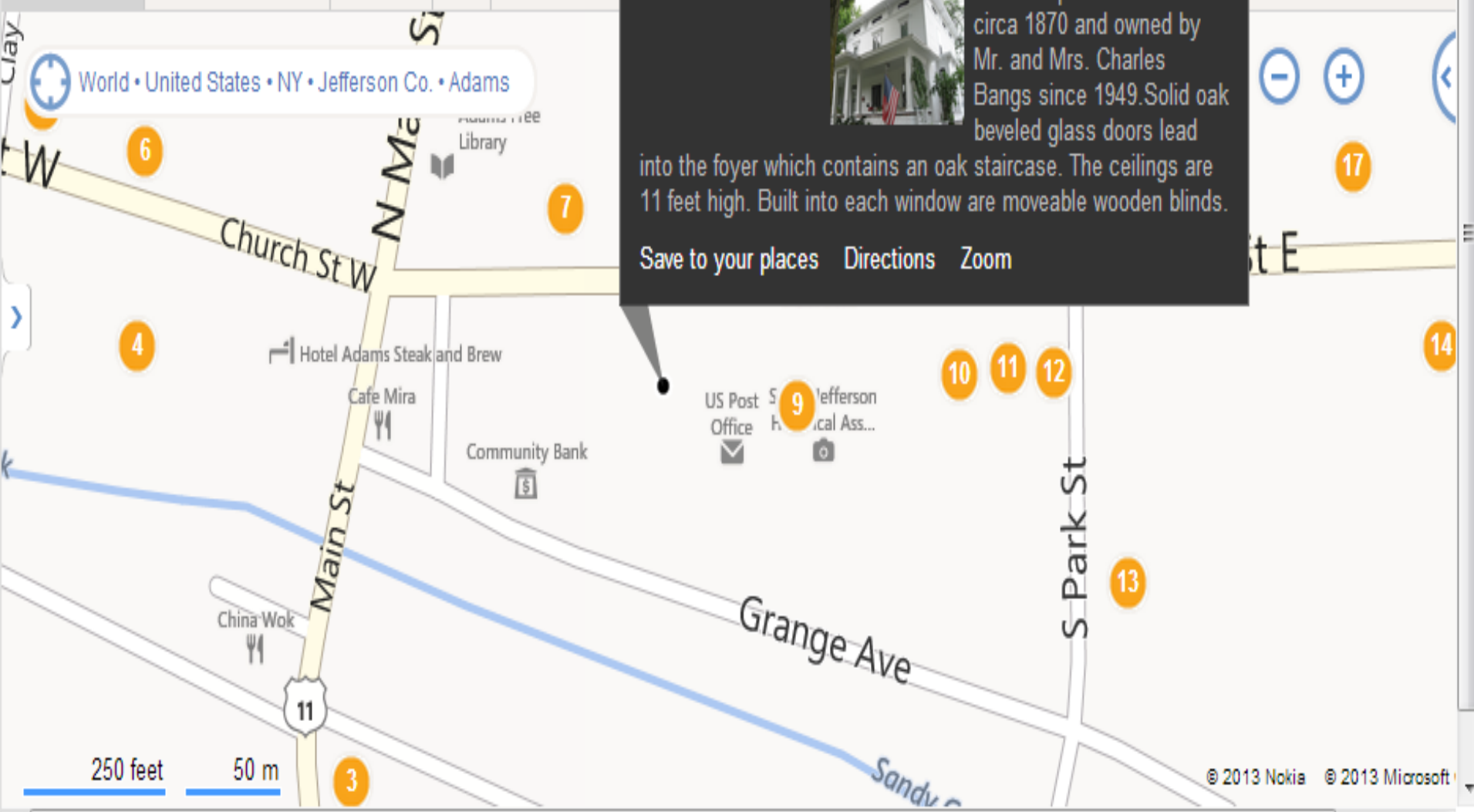


0 of 5

Road Bird's eye Traffic

World • United States • NY • Jefferson Co. • Adams

Print Share



This is square roofed built circa 1870 and owned by Mr. and Mrs. Charles Bangs since 1949. Solid oak beveled glass doors lead into the foyer which contains an oak staircase. The ceilings are 11 feet high. Built into each window are moveable wooden blinds.

Save to your places Directions Zoom

250 feet 50 m

Get directions

My places



Save to My Places

Black River Watershed

Public · 18 views

Created on May 2 · By Mickey · Updated May 2

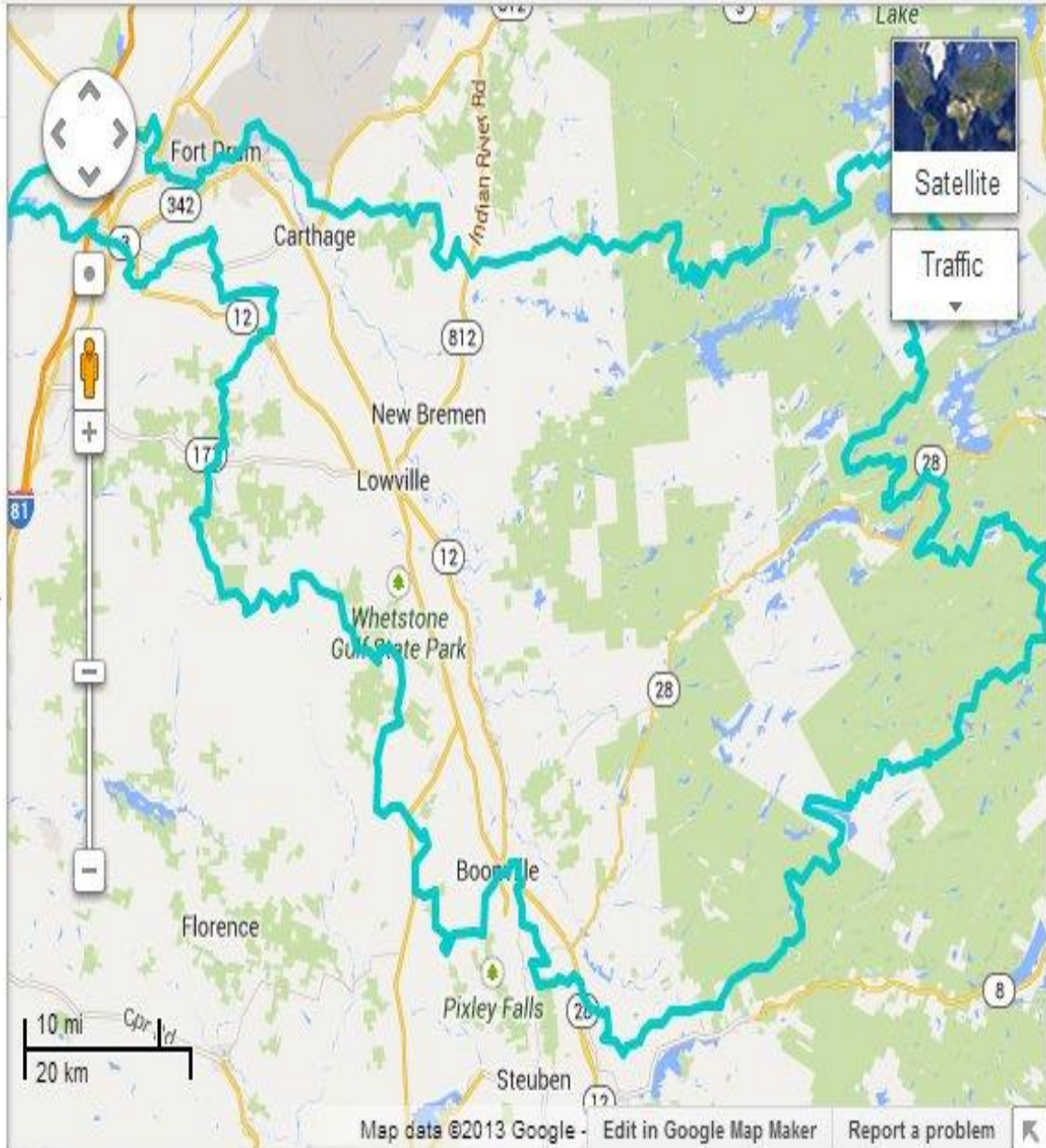
Rate this map · Write a comment · KML ·

0

Black

Black AREA <Null> PERIMETER 643690.854854 DIGIT8_34 DIGIT8_ID 56 HUC_8 04150101 NAME Black NRCS_NAME Black River Shape.a...

Report a problem



Recommended_Fishing_Rivers_And_Streams

Imported at Tue Nov 12 19:32:05 PST 2013 from Recommended_Fishing_Rivers_And_Streams.csv.

Edited at 10:32 PM

Google Fusion Tables

File Edit Tools Help

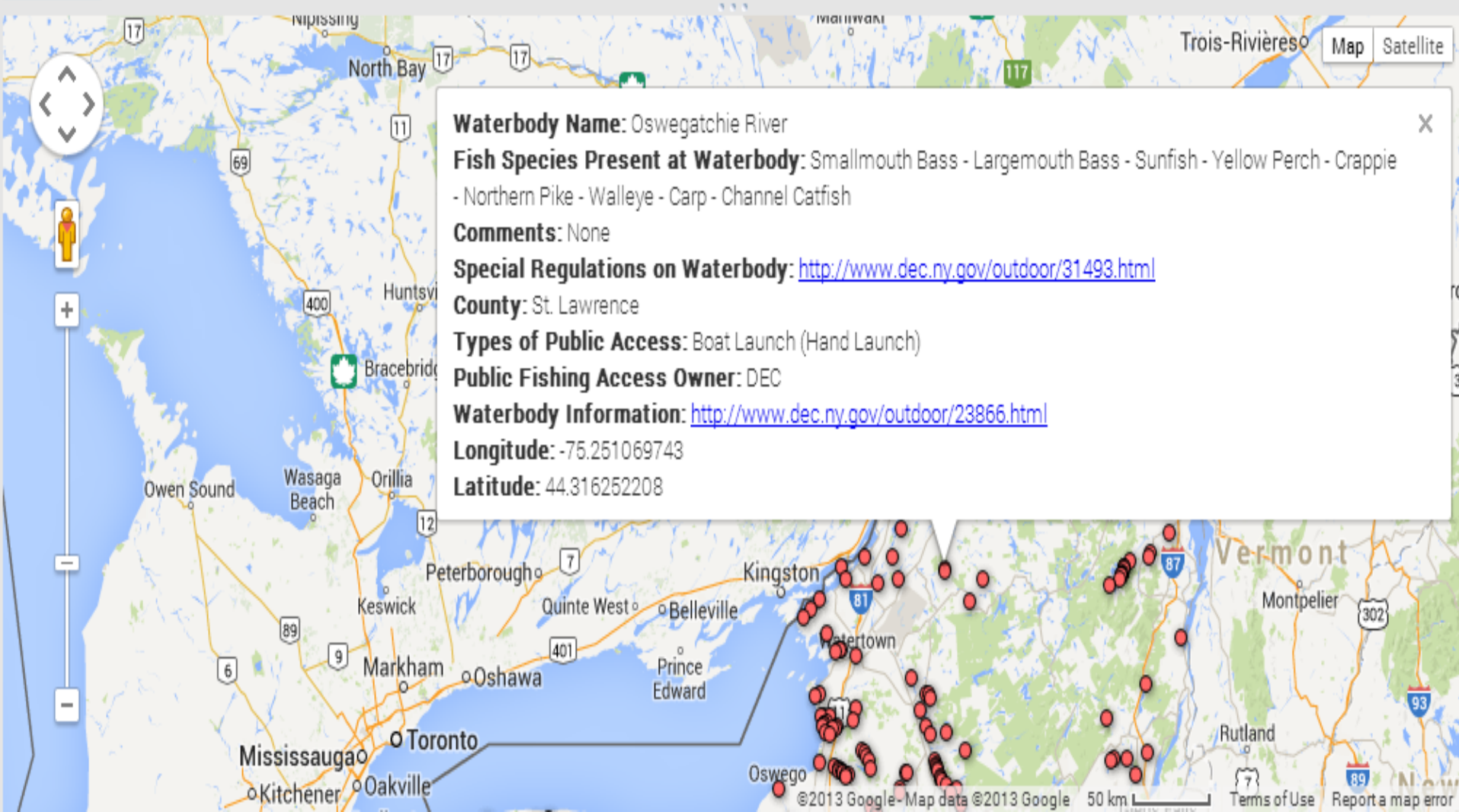
Rows 1

Cards 1

Map of Latitude

Filter No filters applied

Saved 546 rows



Pick What's Best For You



Questions



November 13th – 14th • Saratoga Springs, NY