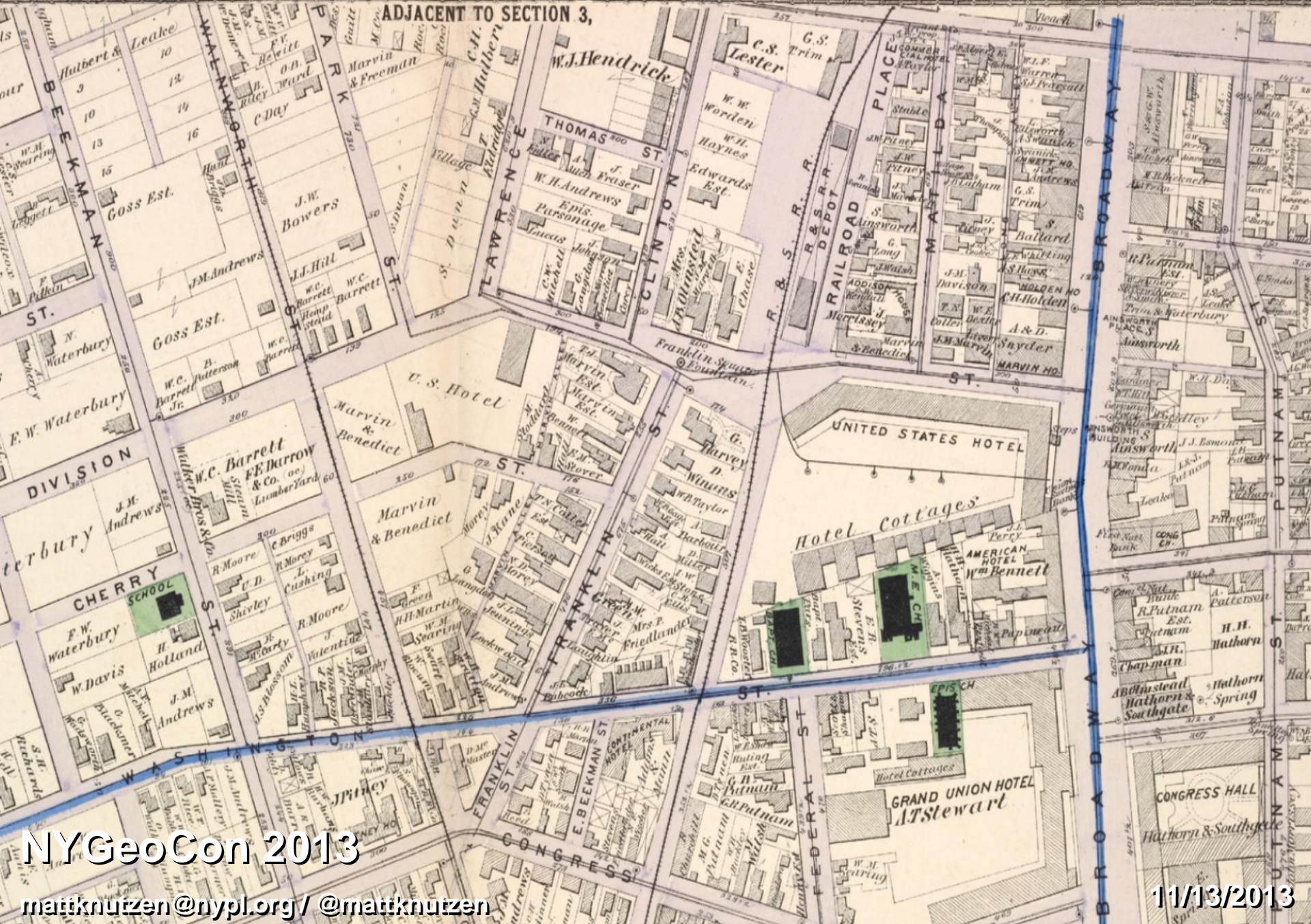


SARATOGA SPRINGS, SECTION 5,

ADJACENT TO SECTION 3,



# The Lionel Pincus & Princess Firyal Map Division

Users:

Geographers ~ Cartographers ~ Geographic Information Scientists

Artists ~ Curators of Art ~ Art Historians

Fiction Writers ~ Nonfiction Writers ~ Poets

Urban Archaeologists ~ Historic & Landmark Preservationists

Geomorphologists ~ Landscape Ecologists ~ Environmental Scientists

Social Historians ~ Economic Historians ~ Infrastructure Historians

Architects ~ Architectural Historians ~ Historic Preservationists

Adaptive Reuse Architects ~ Landscape Architects ~ Urban Planning

Comparative Urban Studies

NYGeoCon 2013

[mattnutzen@nypl.org](mailto:mattnutzen@nypl.org) / @mattnutzen

11/13/2013

# Collections:

433,000 sheet maps

25,000 books & atlases

17,800 scanned maps

Global to the Local ~ Antiquarian to the Contemporary

Antiquarian maps (to the early 16th c): 1,000's of sheets, 100's of atlases

Topographic maps: more than 200,000 sheets

Property maps (approaching architectural scale): 10,000's of sheets

NYC Property maps:

Fire Insurance Maps

Sheet Maps (transit/parks/cemeteries/docks/etc...)

Zoning Maps

Farm Maps

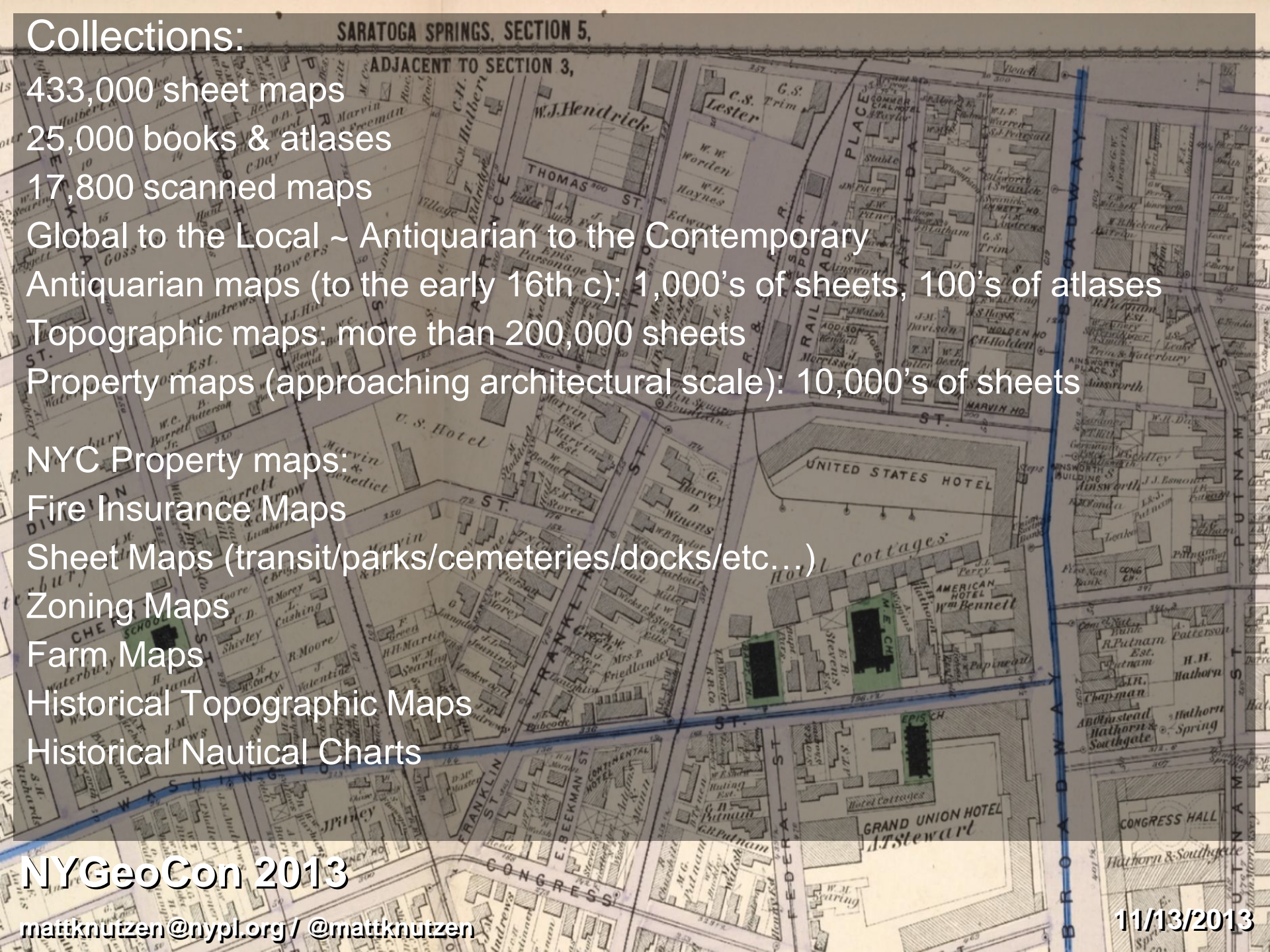
Historical Topographic Maps

Historical Nautical Charts

NYGeoCon 2013

[mattnutzen@nypl.org](mailto:mattnutzen@nypl.org) / @mattnutzen

11/13/2013



# New ways of meeting new user expectations...

Digitization:

1997-2001 ~ Mid-Atlantic -1850 ~ 700 maps

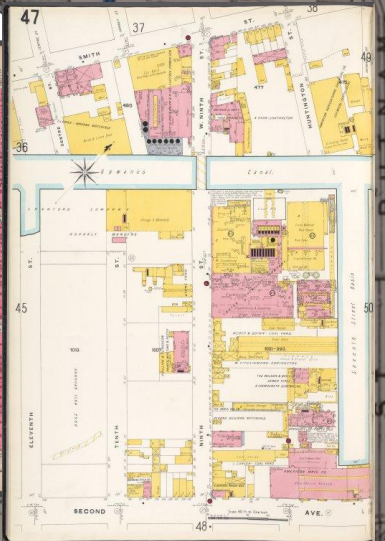
2003-2004 ~ Austria Hungary ~ Topo Maps 1:75,000 ~ 1877-1914 ~ 800 maps

2004 ~ NYC Early Fire Insurance Atlases ~ 1852-1854 ~ 200 maps

2005-2009 ~ NY & NJ State County Atlases ~ 19<sup>th</sup> Century ~ 2000 maps

2005-2009 ~ NYC Fire Insurance Atlases ~ 19<sup>th</sup> and 20<sup>th</sup> c. ~ 3000 maps

2010-2012 ~ NYC Atlases and Maps 19<sup>th</sup> and 20<sup>th</sup> c. ~ 7200 maps



NYGeoCon 2013

matknutzen@nypl.org / @matknutzen

11/13/2013

# New ways of meeting new user expectations...

Digitization:  
NYPL Digital Collections (IA book reader & deep zoom (coming soon!))



Plate 76, Part of Section 13, Borough of the Bronx. [Bounded by Spuyten Duyvil Road, W. 235th Street, Netherland Avenue, Kappock Street, W. Johnson Road and Broadway.]

ITEM DETAILS

NAMES

Atlas of the Borough of the Bronx

1897

Wm. Stanley & Co.

1897

1897

1897

1897

1897

1897

1897

1897

1897

1897

1897

1897

1897

1897

1897

1897

1897

1897

1897

1897

1897

1897

1897

1897

1897

1897

1897

1897

1897

1897

1897

1897

1897

1897

1897

1897

1897

1897

1897

1897

1897

1897

1897

1897

1897

1897

1897

1897

1897

1897

1897

1897

1897

SEE MORE

Atlas of the Borough of the Bronx

1897

Wm. Stanley & Co.

1897

1897

1897

1897

1897

1897

1897

1897

1897

1897

1897

1897

1897

1897

1897

1897

1897

1897

1897

1897

1897

1897

1897

1897

1897

1897

1897

1897

1897

1897

1897

1897

1897

1897

1897

1897

1897

1897

1897

1897

1897

1897

1897

1897

1897

1897

1897

1897

1897

1897

1897

1897

1897

1897



Plate 76, Part of Section 13, Borough of the Bronx. [Bounded by Spuyten Duyvil Road, W. 235th Street, Netherland Avenue, Kappock Street, W. Johnson Road and Broadway.]

ITEM DETAILS

NAMES

Atlas of the Borough of the Bronx

1897

Wm. Stanley & Co.

1897

1897

1897

1897

1897

1897

1897

1897

1897

1897

1897

1897

1897

1897

1897

SEE MORE

Atlas of the Borough of the Bronx

1897

Wm. Stanley & Co.

1897

1897

1897

1897

1897

1897

1897

1897

1897

1897

1897

1897

1897

1897

1897

1897

NYGeoCon 2013

matknutzen@nypl.org / @matknutzen

11/13/2013

# New ways of meeting new user expectations...

## Transformative Workflows (maps.nypl.org): map warping (i.e. georectification)

A New York Public Library website [Explore others!](#)

### NYPL Map Warper


Logged in as: **Matt knutzen** [My Maps](#) [My Activity](#) [Settings](#) [Log Out](#)  
[All Maps](#) [All Layers](#) [All Activity](#) [All Comments](#) [User Stats](#) [Administer](#) [Users](#)

[Home](#) [Browse All Maps](#) [Browse Rectified Maps](#) [Browse All Layers](#)

Search  for  in  all maps  rectified maps only

#### How to use this tool

[NYPL Map Warper How-To](#)






The NYPL Map Warper is a tool for digitally aligning ("rectifying") historical maps from the NYPL's collections to match today's precise maps. Visitors can browse already rectified maps or assist the NYPL by aligning a map. Play the video above to tour the site and learn how to rectify a map yourself.

Everyone is welcome to participate!


Recipient of the 2012 Cutting Edge Technology in Library Services Award from

#### My Maps

Map	Title	Last modified	Status
	<b>Part of Coney Island, Town of Gravesend.</b> <i>from Robinson's atlas of Kings County, New York : compiled from official records ... / under the direction of E. Robinson. (In 2 layers) Depicts: 1890</i> <a href="#">View Map</a>   <a href="#">Edit/Rectify Map</a>   <a href="#">Remove from My Maps</a>   <input type="button" value="Is a map"/>   <a href="#">Download KML</a> <small>Bibliographic records: <a href="#">Digital Gallery</a></small>	3 days ago.	3 control points.
	<b>Plan of The Central Park, City of New York, 1860</b> <i>from Manhattan (In 3 layers)</i> <a href="#">View Map</a>   <a href="#">Edit/Rectify Map</a>   <a href="#">Remove from My Maps</a>   <input type="button" value="Is a map"/>   <a href="#">Download KML</a> <small>Bibliographic records: <a href="#">Digital Gallery</a></small>	3 days ago.	4 control points.
	<b>Plate 28: Map bounded by Henry Street, Grand Street, Corlears Street, South Street, Montgomery Street; Including Madison Street, Monroe Street, Cherry Street, Water Street, Front Street, Gouverneur Street, Gouverneur Slip, Scammel Street, Ja</b> <i>from Maps of the city of New-York. (In 2 layers) Depicts: 1857</i> <a href="#">View Map</a>   <a href="#">Edit/Rectify Map</a>   <a href="#">Remove from My Maps</a>   <input type="button" value="Is a map"/>   <a href="#">Download KML</a> <small>Bibliographic records: <a href="#">Digital Gallery</a></small>	9 days ago.	4 control points.

[See all of My Maps](#)

#### Most Recently Rectified Maps

Map	Title	Last modified	Status
	<b>Map of Spanish Louisiana and the American colonies / J. Gibson, sculp.</b> <i>from Whole (In 4 layers)</i> <a href="#">View Map</a>   <a href="#">Edit/Rectify Map</a>   <a href="#">Remove from My Maps</a>   <input type="button" value="Is a map"/>   <a href="#">Download KML</a>	about 17 hours ago.	5 control points.

NYGeoCon 2013

[mattknutzen@nypl.org](mailto:mattknutzen@nypl.org) / [@mattknutzen](#)

11/13/2013

# New ways of meeting new user expectations...

Transformative Workflows (maps.nypl.org):  
map warping (i.e. georectification)

A New York Public Library website [Explore others!](#)

## NYPL Map Warper

Logged in as: **Matt knutzen** [My Maps](#) [My Activity](#) [Settings](#) [Log Out](#)  
[All Maps](#) [All Layers](#) [All Activity](#) [All Comments](#) [User Stats](#) [Administer Users](#)

[Home](#) [Browse All Maps](#) [Browse Rectified Maps](#) [Browse All Layers](#)

[Show](#) [Rectify](#) [Crop](#) [Align](#) [Preview Rectified Map](#) [Export](#) [Activity](#) [Comments \(1\)](#)

NYGeoCon 2013

[mattknutzen@nypl.org](mailto:mattknutzen@nypl.org) / [@mattknutzen](https://twitter.com/mattknutzen)

11/13/2013

# New ways of meeting new user expectations...

Transformative Workflows (maps.nypl.org):  
map warping (i.e. georectification)



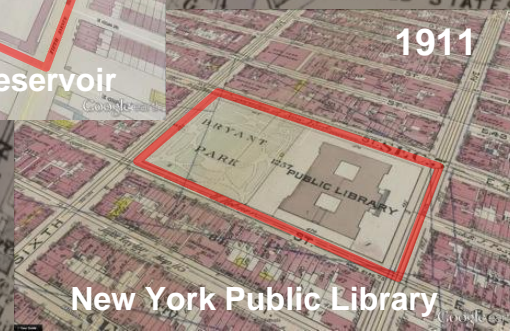
1854

New York Crystal Palace



1862

Croton Distributing Reservoir



1911

New York Public Library



2013

Manhattan

NYGeoCon 2013

matknutzen@nypl.org / @matknutzen

11/13/2013



# New ways of meeting new user expectations...

## Transformative Workflows (maps.nypl.org): map warping ... Enables Geosearch!

A New York Public Library website | Explore others: [dropdown]

### NYPL Map Warper

Logged in as: **Matt knutzen** [My Maps](#) [My Activity](#) [Settings](#) [Log Out](#)  
[All Maps](#) [All Layers](#) [All Activity](#) [All Comments](#) [User Stats](#) [Administer Users](#)

[Home](#) [Browse All Maps](#) [Browse Rectified Maps](#) [Browse All Layers](#)

Home > Maps

#### Find Rectified Maps.

Move or zoom map - both the map and list will be updated with found maps.

Found 204 Maps. Showing 0 - 20

- Part of Town Babylon  
Open map
- Part of Town of Islip  
Open map
- Westbury - Jericho - Hicksville - Locust - Grove, Etc.  
Open map
- Sea Cliff, (East to) Brookville - East Norwich - Syosset, Etc.  
Open map
- Oyster Bay, Queens Co. - Lattingtown, Town of Oyster Bay. - East Norwich, Town of Oyster Bay. - Oyster Bay Harbor, Town of Oyster Bay.  
Open map
- Babylon, Suffolk Co. - Commack, Town of Huntington, Suffolk Co.  
Open map
- Town of Babylon. [Township]; Map of Oak & Cap Islands and Beach.  
Open map
- Massapequa - Amityville  
Open map
- Farmingdale (West) Central Park, Etc.  
Open map

NEW YORK PUBLIC LIBRARY  
Privacy Policy | Rules And Regulations | Using The Internet | Website Terms And Conditions | Gifts Of Materials To NYPL © The New York Public Library, 2011

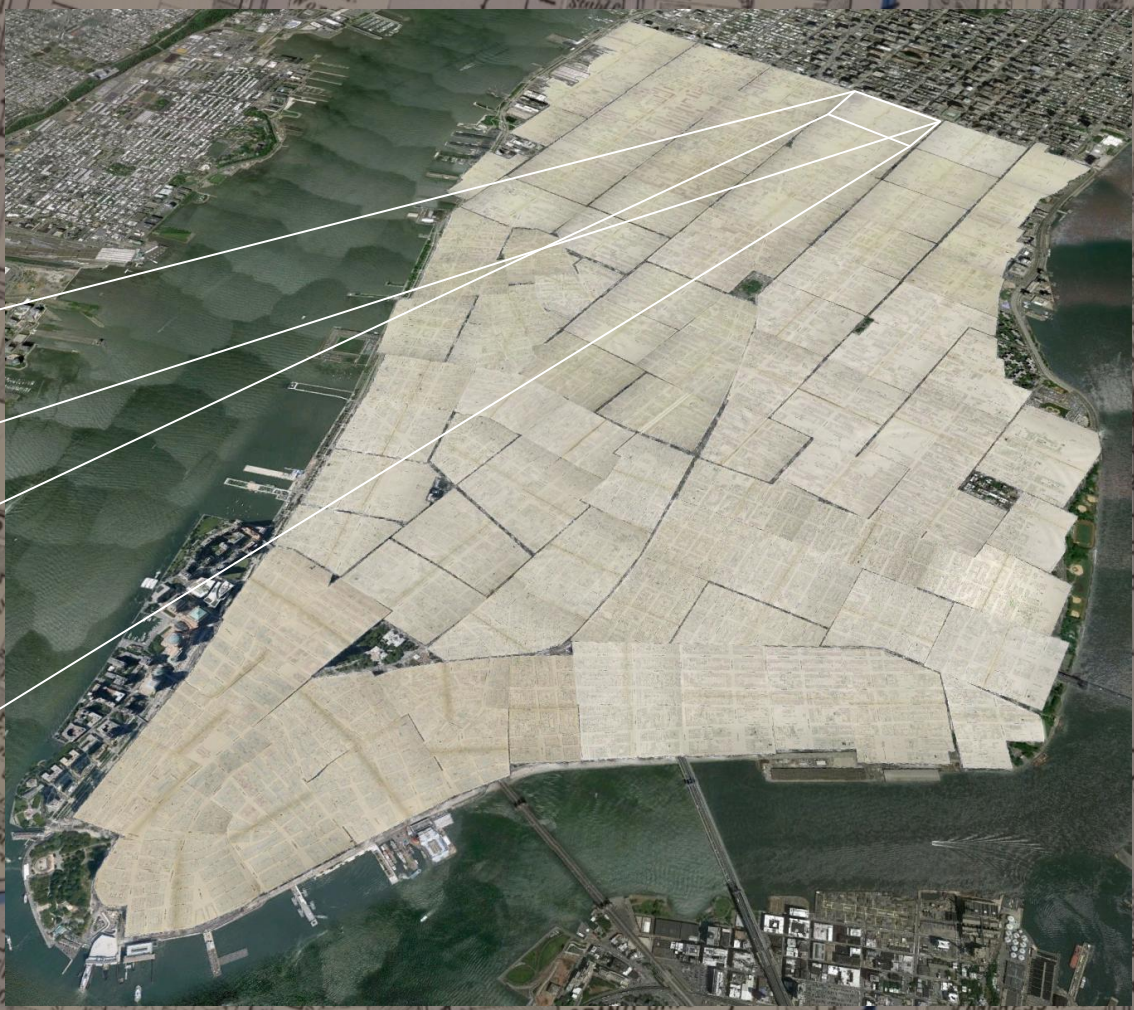
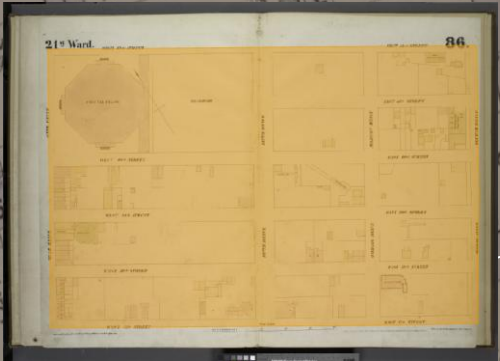
NYGeoCon 2013

mattnutzen@nypl.org / @mattnutzen

11/13/2013

# New ways of meeting new user expectations...

Transformative Workflows (maps.nypl.org):  
map cropping & mosaics



NYGeoCon 2013

matknutzen@nypl.org / @matknutzen

11/13/2013

# New ways of meeting new user expectations...

## Transformative Workflows (maps.nypl.org): tracing

A New York Public Library website Explore others!

### NYPL Map Warper

Logged in as: **Matt knutzen** [My Maps](#) [My Activity](#) [Settings](#) [Log Out](#)  
[All Maps](#) [All Layers](#) [All Activity](#) [All Comments](#) [User Stats](#) [Administer Users](#)

[Home](#) [Browse All Maps](#) [Browse Rectified Maps](#) [Browse All Layers](#)

Home > Maps > Layers > Layer 861

#### Maps of the city of New York / surveyed under directions of insurance companies of said city.

Depicts : 1854 [Add/Edit Year](#)  
**98 maps (98 maps rectified 100%)**  
(Visible) [Toggle Visibility](#) | [Merge](#) | [Download KML](#)  
[Share](#) [Facebook](#) [Twitter](#) [LinkedIn](#) [Export](#)

Show [Digitize](#) [Export](#) [Metadata](#) [Comments \(0\)](#)

#### Edit and Add New Features

Download Save to Server Delete Paste Last

Layer to edit: Buildings

#### Attributes

Name:

Number:

Street:

Materials:

Use Type:

Use SubType:

Comment:

#### Changed Features

Id	Name	Number	Street
buildings 51824			West 38th Street
buildings 51825			Seventh Avenue
buildings 51826	Seventh Avenue...	117-119	West 37th Street
buildings 51827	Seventh Avenue...	105-115	West 37th Street
buildings 51828			West 37th Street
buildings 51829			West 37th Street
buildings 51830		83	West 38th Street
buildings 51831		81	West 38th Street
buildings 51832	Marble Works	85	West 38th Street
buildings 47898	Crystal Palace		West 40th Street

#### Features List

Id	Name	Number	Street
buildings 51824			West 38th Street
buildings 51825			Seventh Avenue
buildings 51826	Seventh Avenue...	117-119	West 37th Street
buildings 51827	Seventh Avenue...	105-115	West 37th Street
buildings 51828			West 37th Street
buildings 51829			West 37th Street
buildings 51830		83	West 38th Street
buildings 51831		81	West 38th Street
buildings 51832	Marble Works	85	West 38th Street
buildings 47898	Crystal Palace		West 40th Street

NYGeoCon 2013

mattnutzen@nypl.org / @mattnutzen

11/13/2013

# New ways of meeting new user expectations...

## Transformative Workflows (maps.nypl.org):

2010-2013 NEH funded [NYC Historical GIS](#)

The screenshot shows the NYPL website interface. At the top left is the NYPL logo. To its right is a search bar with a dropdown menu set to 'Keyword' and a search button. Below the search bar are links for 'Classic Catalog' and 'Advanced Search'. A navigation menu includes 'Home', 'My NYPL', 'Explore', 'Research', 'Using the Library', 'Locations', 'Classes & Events', 'Support the Library', and 'Help'. The main content area features a 'Blogs' sidebar on the left and a main article titled 'The New York City Historical GIS Project' by Matt Knutzen, dated June 13, 2012. The article text describes the project's goals and methods, including scanning 9,000 maps and georectifying them. A 'DONATE NOW!' button is visible below the article text. To the right of the article is a small image of a man working with a microscope. Below the article is a 'RELATED BLOG TOPICS' section and a 'SUBSCRIBE TO NYPL BLOGS' link.

NYGeoCon 2013

[mattnutzen@nypl.org](mailto:mattnutzen@nypl.org) / @mattnutzen

11/13/2013

# New ways of meeting new user expectations...

Transformative Workflows ([maps.nypl.org](http://maps.nypl.org)):

2010-2013 NEH funded [NYC Historical GIS](http://maps.nypl.org)



Bronx Topographic Bureau  
Topo survey... E. of the Bronx River.  
1905



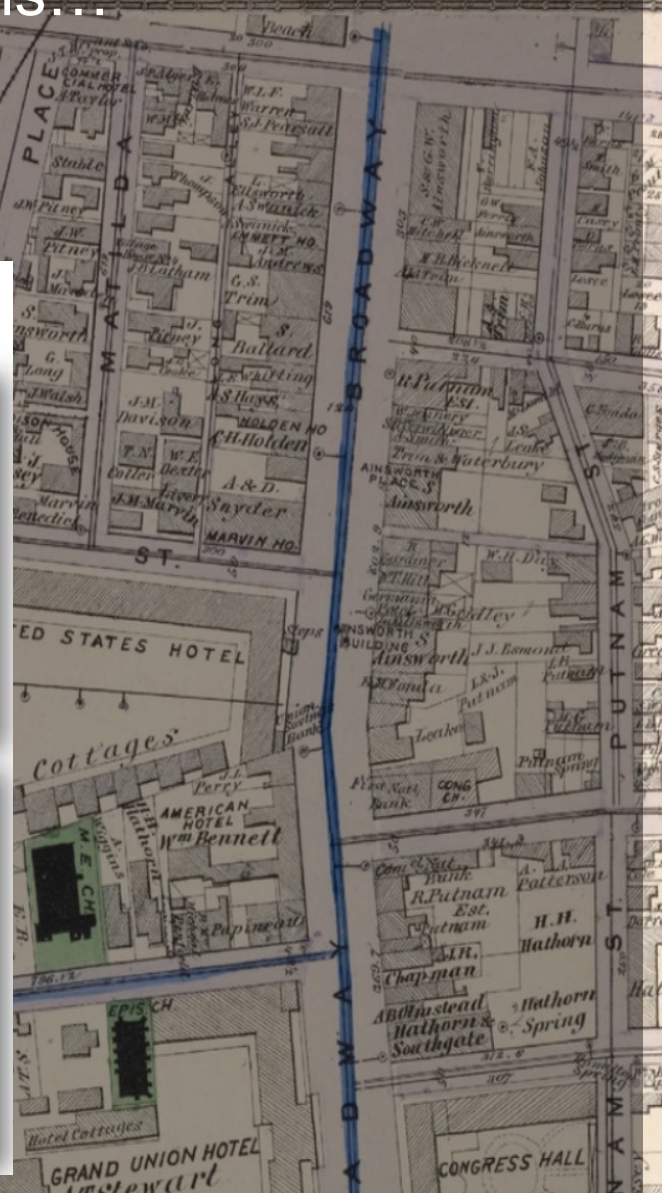
G.W. Bromley & Co.  
Atlas of ... Borough of Queens...  
1909



G.W. Bromley & Co.  
Atlas of... borough of Richmond...  
1917



Hopkins, Griffith Morgan  
...Atlas of the city of Brooklyn...  
1880



NYGeoCon 2013

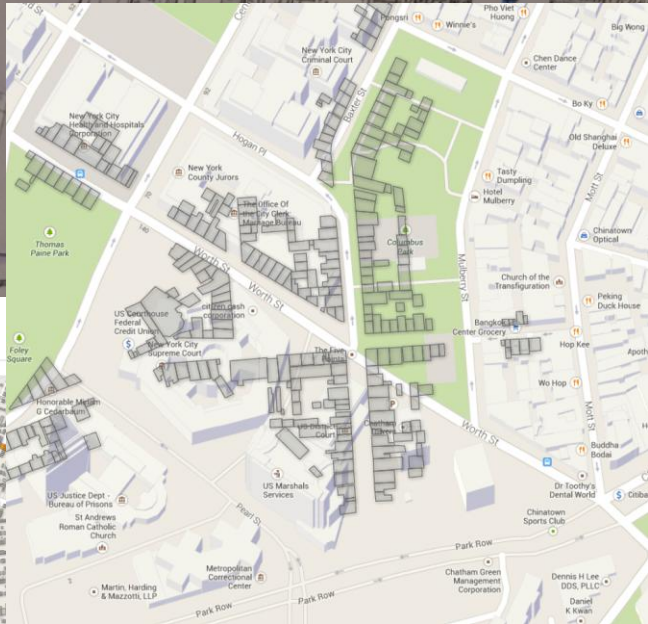
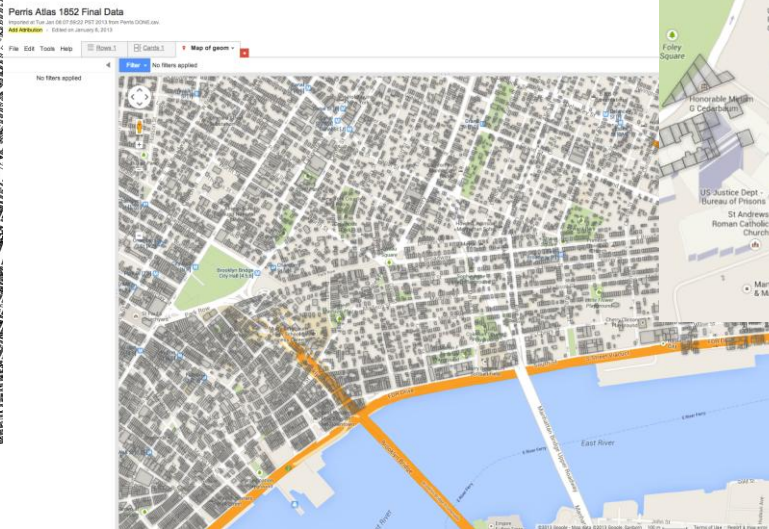
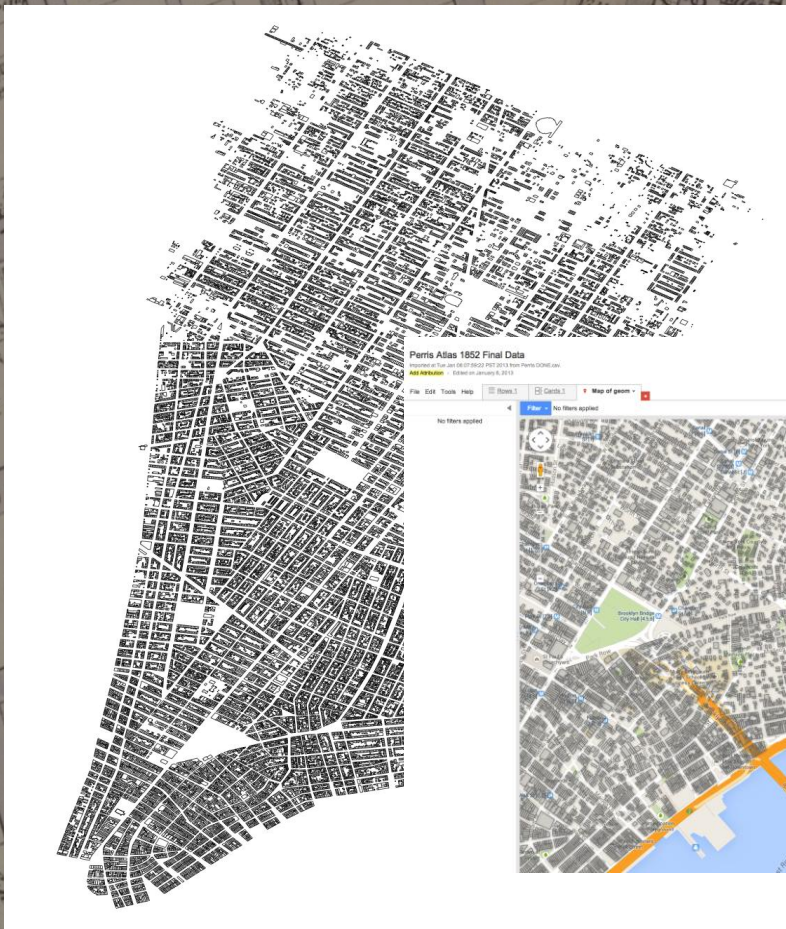
[matknutzen@nypl.org](mailto:matknutzen@nypl.org) / @matknutzen

11/13/2013

# New ways of meeting new user expectations...

Transformative Workflows (maps.nypl.org):

2010-2013 NEH funded [NYC Historical GIS](http://maps.nypl.org)



NYGeoCon 2013

[mattnutzen@nypl.org](mailto:mattnutzen@nypl.org) / @mattnutzen

11/13/2013

# New ways of meeting new user expectations...

Transformative Workflows (maps.nypl.org):

2010-2013 NEH funded [NYC Historical GIS](http://maps.nypl.org)



NYGeoCon 2013

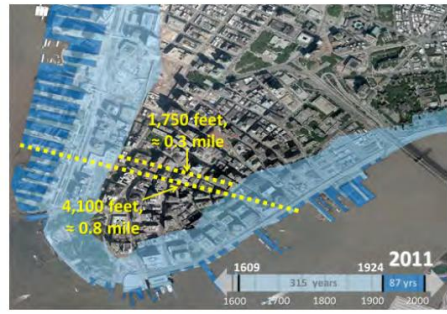
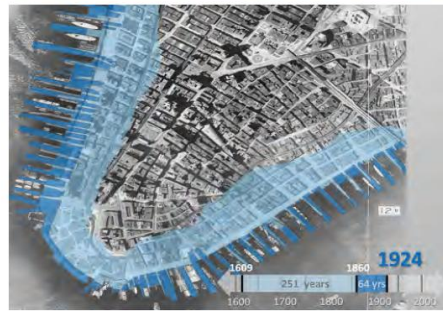
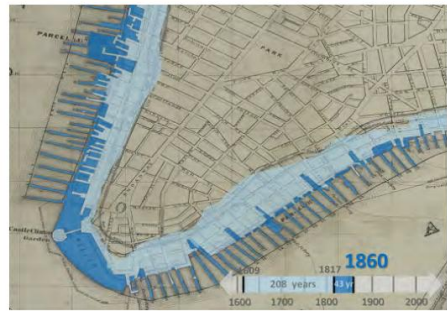
[matknutzen@nypl.org](mailto:matknutzen@nypl.org) / @matknutzen

11/13/2013

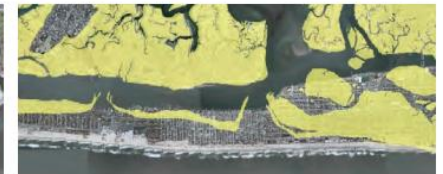
# New ways of meeting new user expectations...

## Transformative Workflows (maps.nypl.org):

2010-2013 NEH funded [NYC Historical GIS](http://maps.nypl.org) ... AND beyond



1. Coney Island (1878 to 2011; 133 years)



2. Hempstead Bay (1880 to 2011; 131 years)



3. Point Lookout (1926 to 2011; 85 years)



4. Oyster Bay (1880s to 2011; ~131 years)



5. Tobay Beach (1880 to 2011; 131 years)



6. Bellport Bay (1875 to 2011; 136 years)



NYGeoCon 2013

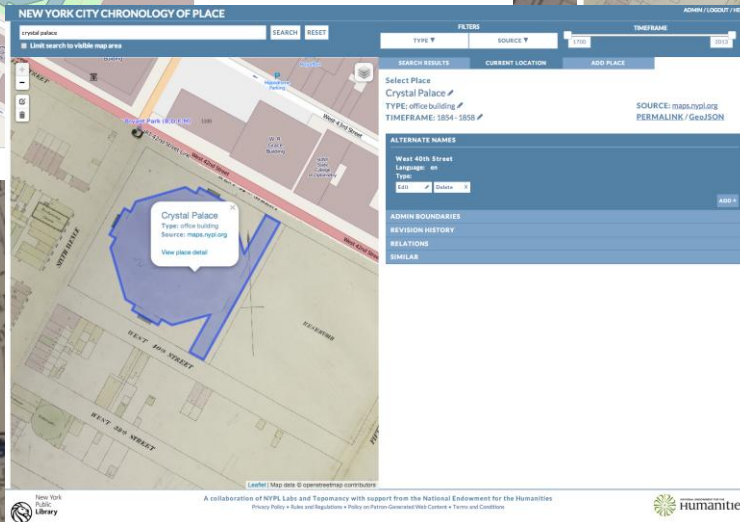
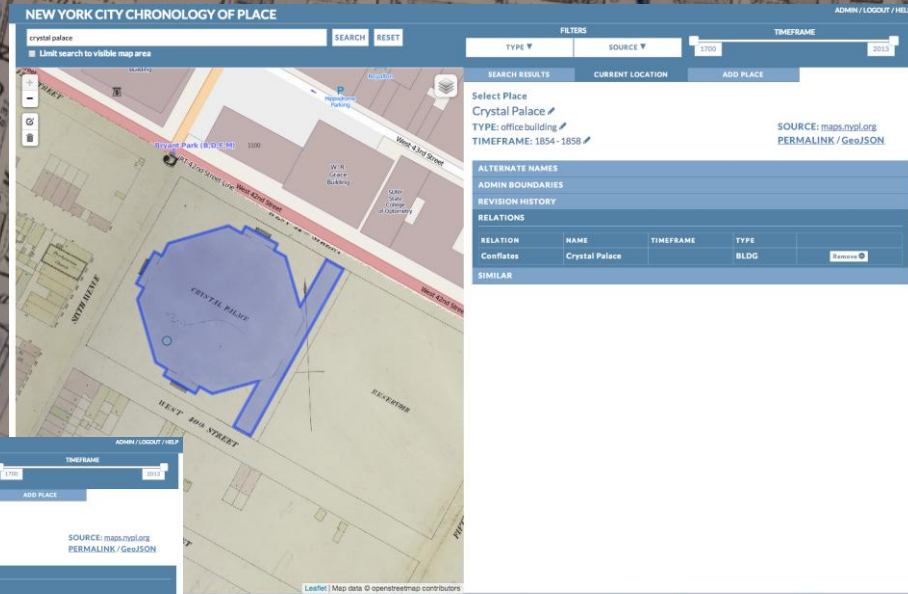
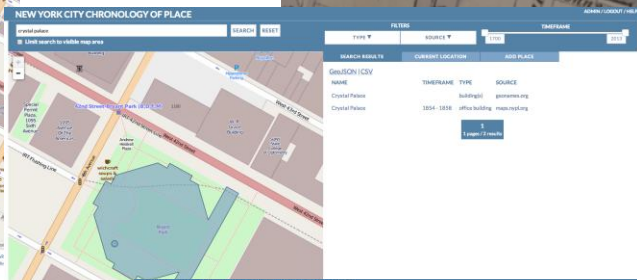
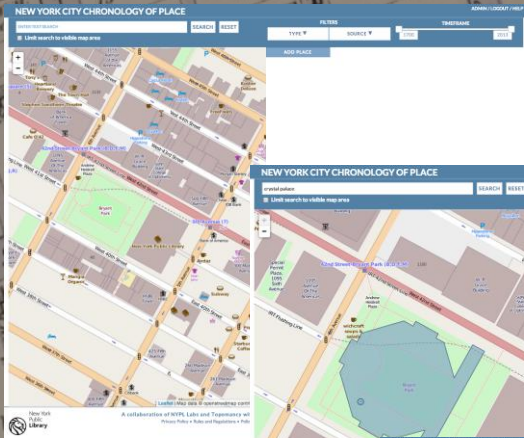
[mattnutzen@nypl.org](mailto:mattnutzen@nypl.org) / @mattnutzen

11/13/2013



# New ways of meeting new user expectations...

## Reweaving Historical Information (dev.gazetteer.nypl.in): 2013 NEH funded ~ New York City Chronology of Place



A collaboration of NYPL Labs and Toponymy with support from the National Endowment for the Humanities  
Privacy Policy • Rules and Regulations • Policy on Patron-Generated Web Content • Terms and Conditions



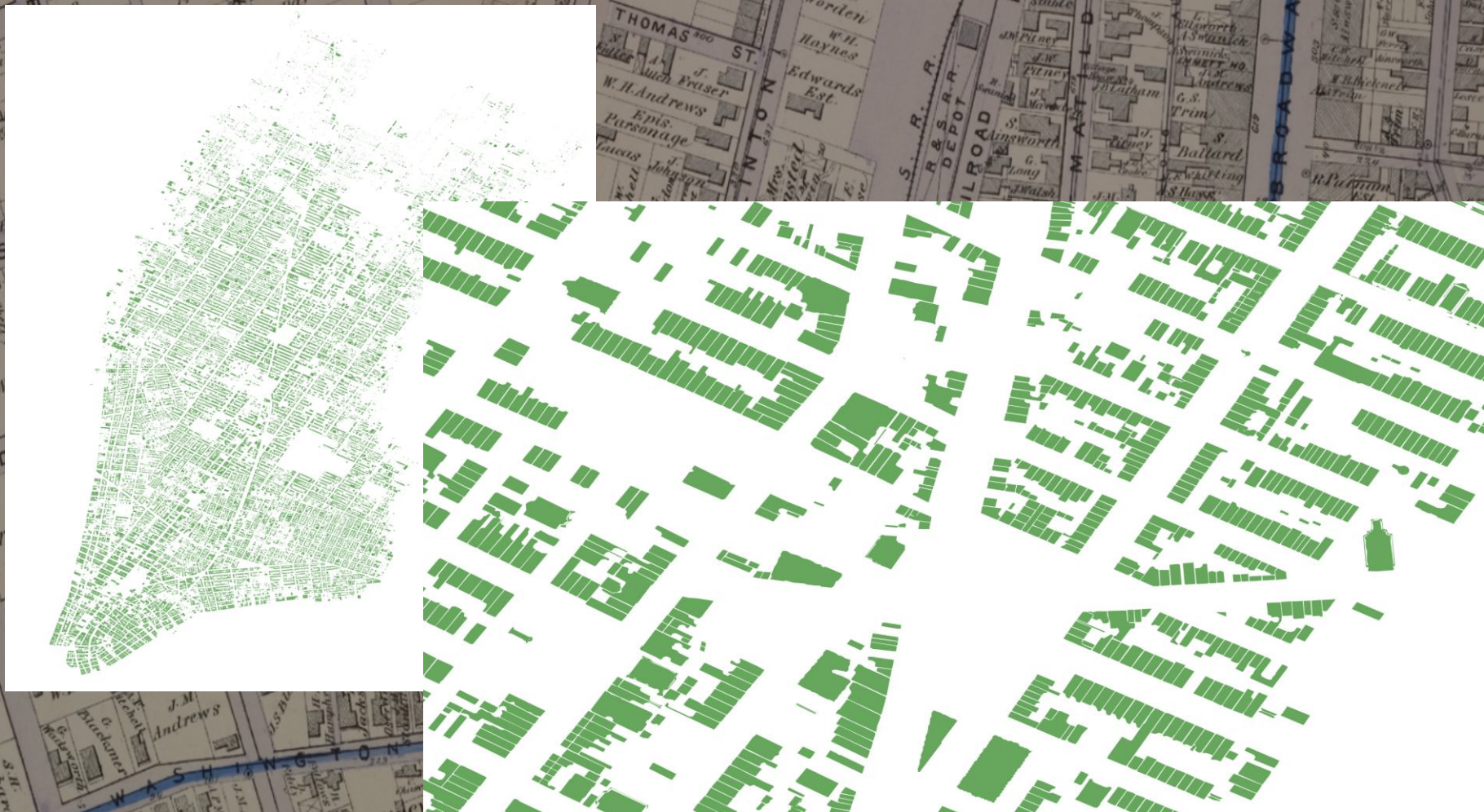
NYGeoCon 2013

matknutzen@nypl.org / @matknutzen

11/13/2013

# New ways of meeting new user expectations...

Automated Feature Extraction:



NYGeoCon 2013

[mattnutzen@nypl.org](mailto:mattnutzen@nypl.org) / @mattnutzen

11/13/2013

# New ways of meeting new user expectations...

Creating hooks for images

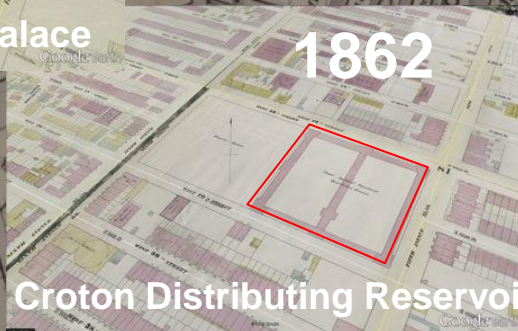
1854



New York Crystal Palace



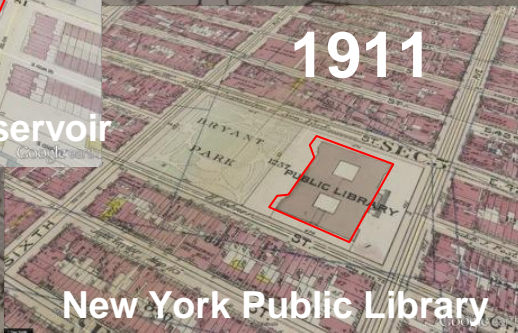
1862



Croton Distributing Reservoir



1911



New York Public Library



2013



Manhattan

NYGeoCon 2013

matknutzen@nypl.org / @matknutzen

11/13/2013

# New ways of meeting new user expectations...

## Creating digital hooks for text

A New York Public Library website [Explore others!](#)

### NYPL Map Warper

[Home](#) [Browse All Maps](#) [Browse Rectified Maps](#) [Browse All Layers](#)

Home > Maps > Layers > Layer 875



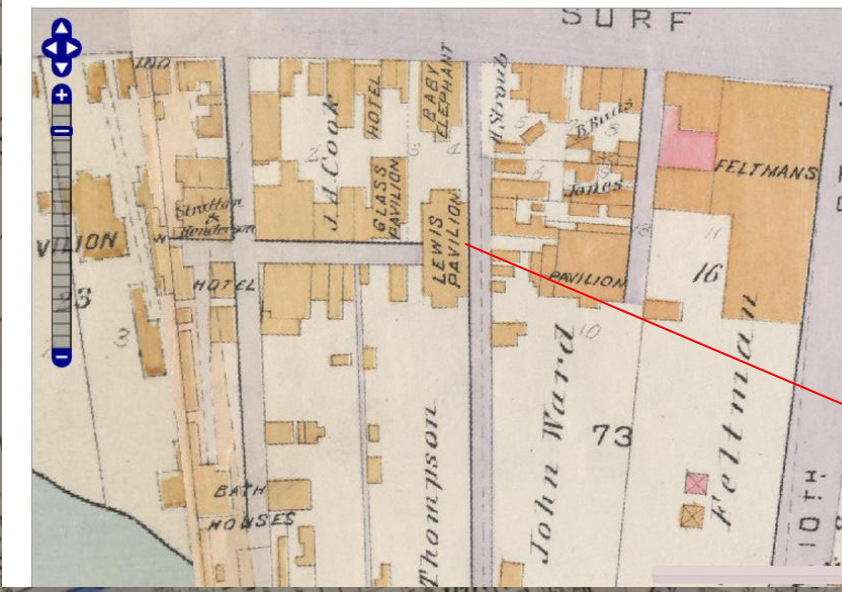
### Robinson's atlas of Kings County, New York : compiled for Depicts : 1890 Add/Edit Year

**31 maps (29 maps rectified 94%)**

(Visible) [Toggle Visibility](#) | [Merge](#) | [Download KML](#)

[Share](#) | [Facebook](#) | [Twitter](#) | [Export](#)

Show [Digitize](#) [Export](#) [Metadata](#) [Comments \(0\)](#)



LIBRARY OF CONGRESS | ASK A LIBRARIAN | DIGITAL COLLECTIONS | LIBRARY CATALOGS | Search Search Loc.gov GO

The Library of Congress > [Chronicling America](#) > [The sun.](#) > [August 07, 1891](#) > [Page 7, Image 7](#)

NATIONAL ENDOWMENT FOR THE HUMANITIES | CHRONICLING AMERICA | Historic American Newspapers

Search America's historic newspaper pages from 1836-1922 or use the U.S. Newspaper Directory to find information about American newspapers published between 1690-present. Chronicling America is sponsored jointly by the National Endowment for the Humanities and the Library of Congress. [Learn more](#)

Search Pages | [Advanced Search](#) | [All Digitized Newspapers 1836-1922](#) | [US Newspaper Directory, 1690-Present](#)

All states | from 1836 to 1922 | enter one or more search words GO

[Back to search results](#) 1 of 13 | [Next](#)

### The sun., August 07, 1891, Page 7, Image 7

About The sun. (New York [N.Y.]) 1833-1916

Image provided by: The New York Public Library, Astor, Lenox and Tilden Foundation

THE SUN, FRIDAY, AUGUST 7, 1891

### DANCING FOR PIG PRIZES.

**FUN FOR THE DANCERS, BUT HARD TIMES FOR THE PIGS.**

The latest style of entertainment among the ladies and gents of the swell social circles in Coney Island's bowery.

An event which never fails to excite the interest of the leading ladies and the gents who live in the thoroughfare of concert halls and saloons known as the Bowery on Coney Island took place on Wednesday night. It was the annual pig dance of the John F. Larkey Association. Mr. Larkey is a constituent of Timothy Dry Dollar Sullivan.

For days big posters announcing the affair were displayed all over Coney Island. They announced that the dance would be preceded by a variety entertainment in which all the leading talent of the island would participate, and that after this was concluded there would be a waiting contest for four Duck Hill pigs. The first announcement was taken as a matter of course, but the dancing for the pigs created the greatest kind of a furore among the West End Four Hundred. Mr. E. Percy Taggart, the Ward McAllister of the Four Hundred, was to be master of ceremonies. Mr. Taggart holds the high honor of leadership because he has a dress suit which is all his own, and his cards printed from an engraved copper plate.

The dance was held in Lewis's pavilion. As may be imagined, the place was crowded to the doors with gents and ladies, and perfumed and moistened with the smoke of burning cigarettes and the froth of beer.

The variety entertainment lasted until 1

## THEY ARE COMING!

(YOU HAVE MET THEM.)

# Cholera Morbus

# Cramps

# Colic

# Diarrhoea

# Summer Complaints

# Dysentery.

48th ST., 20 EAST.—11a.m. board; translucent and sound.

77th ST., 317 EAST.—N. only; of light for sea bath; board optional.

88th ST., 204 EAST.—14c. 2c. week; home or

84th ST., 131 EAST.—Excellent accommodations; superior table; board private family.

Wen

BRYANT PARK HOTEL—11a.m. and single rooms, with room, \$5.00 per week and

NEATLY FURNISHED—very reasonable. Call No. 204 8th av., city.

9th ST., 20 WEST.—Ch. rooms; in refined Amer. permanent; transient; ref.

15th ST., 321 WEST.—separate, with or w. b.; doctor preferred; rate

16th ST., 153 WEST.—small rooms, with c. suitable.

18th ST., 116 WEST.—5 b. room, with case so up.

18th ST., 315 WEST.—very convenient; m

25th ST., 321 WEST.—with board; also lab

45th ST., 213 WEST.—home; refined con

NYGeoCon 2013

matknutzen@nypl.org / @matknutzen

11/13/2013

# New ways of meeting new user expectations...

## Creating digital hooks for text

A New York Public Library website [Explore others!](#)

### NYPL Map Warper

[Home](#) [Browse All Maps](#) [Browse Rectified Maps](#) [Browse All Layers](#)

Home > Maps > Layers > Layer 875



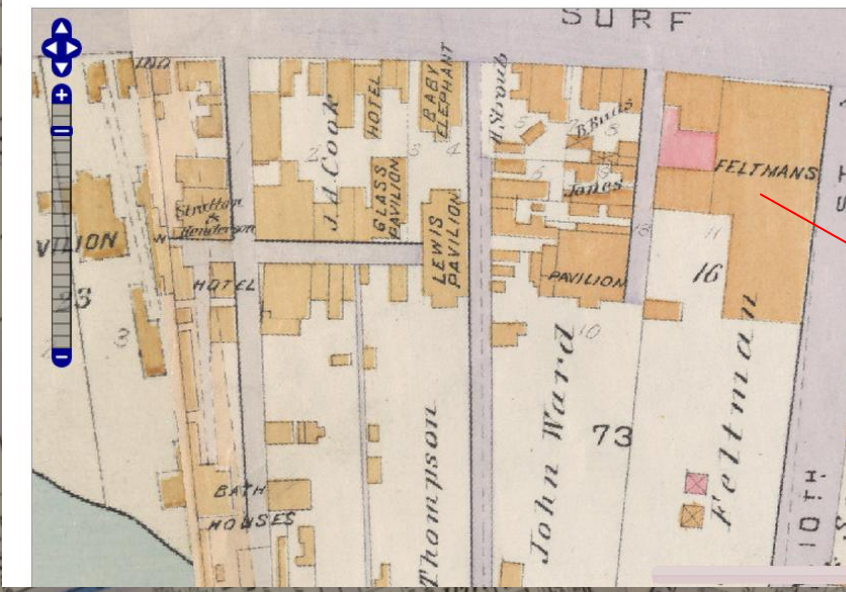
### Robinson's atlas of Kings County, New York : compiled from Depicts : 1890 Add/Edit Year

**31 maps (29 maps rectified 94%)**

(Visible) [Toggle Visibility](#) | [Merge](#) | [Download KML](#)

[Share](#) | [fb](#) | [my](#) | [tw](#) | [Export](#)

Show [Digitize](#) [Export](#) [Metadata](#) [Comments \(0\)](#)



LIBRARY OF CONGRESS

[ASK A LIBRARIAN](#) [DIGITAL COLLECTIONS](#) [LIBRARY CATALOGS](#) Search [Search Loc.gov](#) [GO](#)

The Library of Congress > [Chronlicling America](#) > [The sun.](#) > [March 01, 1912](#) > [Page 14, Image 14](#)

 NATIONAL ENDOWMENT FOR THE HUMANITIES **CHRONICLING AMERICA** Historic American Newspapers

Search America's historic newspaper pages from 1836-1922 or use the U.S. Newspaper Directory to find information about American newspapers published between 1690-present. Chronicling America is sponsored jointly by the National Endowment for the Humanities & the Library of Congress. [Learn more >](#)

[Search Pages](#) [Advanced Search](#) [All Digitized Newspapers 1836-1922](#) [US Newspaper Directory, 1690-Present](#)

All states [+](#) from 1836 to 1922 [+](#) enter one or more search words [GO](#)

[Back to search results](#) [Previous](#) | 16 of 461 | [Next](#)

[Print](#) [Subscribe](#) [Share/Save](#) [Give Feedback](#)

### The sun., March 01, 1912, Page 14, Image 14

About The sun. (New York [N.Y.]) 1833-1916

Image provided by: The New York Public Library, Astor, Lenox and Tilden Foundation

Image: 14 of 14. [Page All Pages](#) [Issues](#) [All Issues](#) [Text](#) [PDF](#) [JP2 \(4.0 MB\)](#)

### MOTORISTS WATCHING SUIT FOR DAMAGES

Outcome Expected to Be of Interest to All Automobile Owners.

#### DOES PARKING CHECK BIND?

Suit to Recover for Damage Done to Car Stolen From Hotel Where It Had Been Checked.

A suit for damages in the outcome of which every automobile owner in the State will have an especial interest will come before the Second District Municipal Court in Marcy avenue, Brooklyn, on March 4. The decision in the suit, which is brought by Dr. A. S. Brinkerhoff of 44 Monroe street to recover \$500 damages from **Feltman Bros.**, owners of Feltman's Cafe at Coney Island, will establish a precedent as to the responsibility of inn and roadhouse keepers for the loss of automobiles left in their charge by guests. So far as is known Dr. Brinkerhoff's suit is the first of its kind, at least in this part of the State.

On June 11 of last year Clifford Brinkerhoff, a son of the physician, and three friends motored in the doctor's car down to **Feltman's**. They drove their machine into the private parking space reserved by the restaurant management for the use of motorists, and received from the

### Buy Red-Man Collars

EARL & WILSON.

2 for 25 cents.

### EXPLAIN HIGH COST OF BUTTER AND EGGS

Warehouse Men Testify That Cold Storage Prevents Prices Getting Too Low.

BIG PRODUCTION—HOLD 'EM

Small, Neat Like This Winter. Price

### Passing T O

WOMEN'S AUSTRIAN As smart and severe in sentiment in character. The and small shapes, trim be duplicated. Prices \$ Second Floor.

FRENCH SHADOW VEIL that make up in their or livery. Particularly od Wales feather design, po octagon veil outlined with veiling patterned with On display in the Veil

IRISH CROCHET HAND In wonderful designs. I so as to be laundered en done in different, very s a butterfly design and a Bag Department, Main

MADEIRA-EMBROIDER of handkerchief linen. I parasols have plain or sc over designs embroidered \$5.94 to \$17.89. On dis

### YOUNG W

NYGeoCon 2013

matknutzen@nypl.org / @matknutzen

11/13/2013

# New ways of meeting new user expectations...

## Creating digital hooks for text

A New York Public Library website [Explore others!](#)

### NYPL Map Warper

[Home](#) [Browse All Maps](#) [Browse Rectified Maps](#) [Browse All Layers](#)

Home > Maps > Layers > Layer 875



### Robinson's atlas of Kings County, New York : compiled for

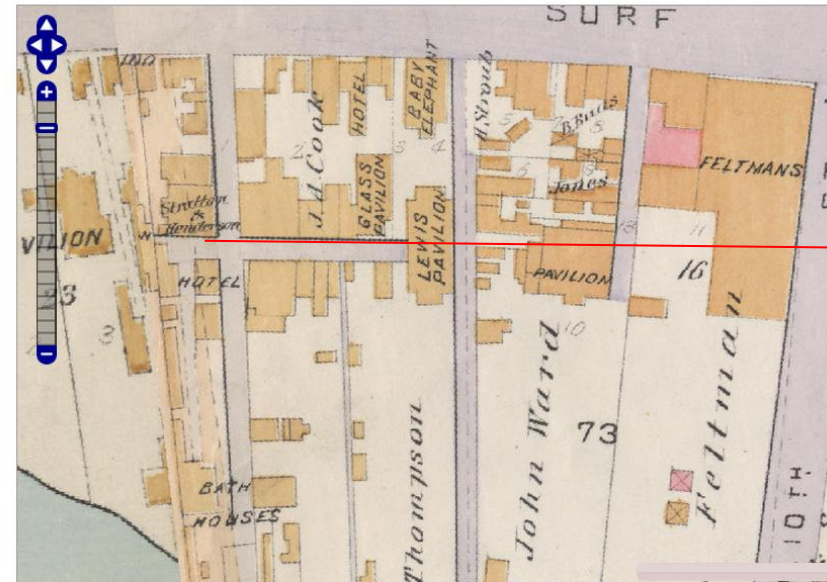
Depicts : 1890 [Add/Edit Year](#)

**31 maps (29 maps rectified 94%)**

(Visible) [Toggle Visibility](#) | [Merge](#) | [Download KML](#)

[Share](#) | [fb](#) | [my](#) | [tw](#) | [Exp](#) | [Report](#)

Show [Digitize](#) [Export](#) [Metadata](#) [Comments \(0\)](#)



LIBRARY OF CONGRESS ASK A LIBRARIAN DIGITAL COLLECTIONS LIBRARY CATALOGS Search Search Loc.gov GO

The Library of Congress > [Chronicling America](#) > [The sun.](#) > [August 30, 1885](#) > [Page 2, Image 2](#)

NATIONAL ENDOWMENT FOR THE HUMANITIES CHRONICLING AMERICA Historic American Newspapers

Search Pages Advanced Search All Digitized Newspapers 1836-1922 US Newspaper Directory, 1690-Present

All states from 1836 to 1922 enter one or more search words GO

[Back to search results](#) [Previous](#) | 4 of 4 [Print](#) [Subscribe](#) [Share/Save](#) [Give Feedback](#)

### The sun., August 30, 1885, Page 2, Image 2

About The sun. (New York [N.Y.]) 1833-1916

Image provided by: The New York Public Library, Astor, Lenox and Tilden Foundation

Image: 2 of 12 Page All Pages Issues All Issues Text PDF JP2 (4.0 MB)

### SURPRISED FOXES.

OWN UPON BY A GLITTERING THRONG OF RIDERS.

...ar Hampton Club Meet in the ...ck Hills—A Fine Morning's Sport ... Appetite for a Fine Cinn Bake.

It wasn't so very cool yesterday ...ro-thirds of the men that rubbed ... eyes as they got on the quarter to ...rboat at East Thirty-fourth street ...ats. The other third yawned as ...ed the collars of their yellow dus- ...their feet were long, close-fitting ...ir legs had the corrugated, dusty ... that comes from being clad ... riding breeches. That was ... real attire that showed, but it ... to tell everybody that they were en- ...ders going to Long Island City to ...lock train to carry them to South- ...ere the Hampton Club was to meet ...at Tuckahoe gate and chase foxes ...ck to get a big appetite. After ...it they were going to appease it ...bake.

...icians had been expected to come ...use courage and speed into the fox ...and accuracy into the bounds. ...ot come, and the train waited a ...an hour for them. Thomas Bell ...and he wanted to wait some more. ...jority feared the foxes would get ...g to get hunted and the train went ...in the smoking car lit a good cigar ...an started, and the men who had ...braches on for the first time up...

### MISS DE VERNEY'S SPREE

She Still Continues to Paint Coney Island a Brilliant Red.

The young actress, Augusta Chambers, or De Verney, who lost her valuable diamonds at Coney Island Thursday midnight, again yesterday caused some excitement by her eccentricities. Early yesterday morning, as is alleged, she caused a sensation by appearing on the streets in an intoxicated condition. She was taken to Police Headquarters, but no charge was made against her. Soon afterward the report was spread that a woman had attempted to drown herself, and Miss De Verney or Chambers was the would-be suicide. It seems that against the wish of her friends she would insist on going in the water, and Stratton and Henderson, being close to Jones's cottage, where she boarded, was the pavilion chosen. Mr. Jones accompanied her, but she would not come out of the water when he did. Mr. Henderson and several others stood on the beach and used their best endeavors to get her to come on shore, but she would not.

"I think she means to drown herself," said one of the bystanders.

"Let her drown," said Mr. Jones. "I have done all I could to get her out."

Officer Byrnes at last rushed into the water and pulled her out.

Dr. Walker was in the pavilion when the woman was brought ashore, and he ordered her to be removed to the house at once. The Doctor said she had been on a protracted drunk, and the loss of her diamonds and the effects of the alcohol combined had no doubt made her very excited.

### A MYSTERIOUS COWHIDING.

Two Professed Strangers Take a Walk—One Returns Bady Used Up.

UNADILLA, AUG. 29.—This morning Mr. S.

### SWIMMING DOWN

BUTLER ...

Six Other ...

Miss ...

Brady Towed by a Rowboat.

Prof. Dennis F. Butler teaches at a Battery bathing establishment. Gus Sundstrom does the same at the Athletic Club building. Prof. Su said that he thought he could beat Prof. Butler has not concealed his he could beat Sundstrom. A r them two or three Sundstroms ago by the police as being in the Sunday law, and the tw were arrested. Prof. Sundstrom s been satisfied with the result of t the other professor distinctly was then Prof. Butler has been trying ong-distance race with the r sor, and on Wednesday la he had made a match to the Battery at Fort Hamilton. The rumor go Prof. Sundstrom wouldn't swi and at 3 o'clock yesterday afterno East River, was crowded with hoped, but hardly expected, to se tween the two professors. The ba came up in tow of a tug, the pe bought tickets went on board, but strom did not appear. The price o reduced one-half, and a part o struggled on board, but Sundstro At 4 o'clock Prof. Butler again

NYGeoCon 2013

matknutzen@nypl.org / @matknutzen

11/13/2013

# New ways of meeting new user expectations...

## Creating digital hooks for text

A New York Public Library website [Explore others!](#)

### NYPL Map Warper

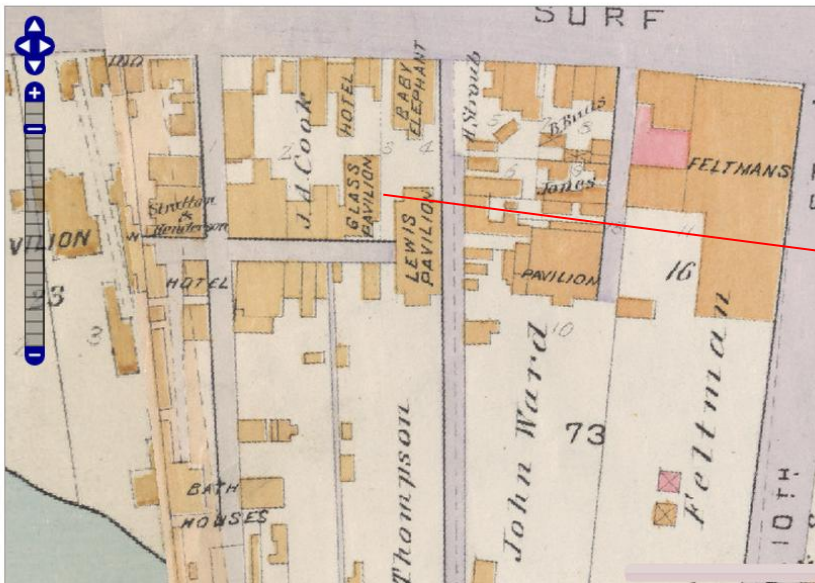
[Home](#) [Browse All Maps](#) [Browse Rectified Maps](#) [Browse All Layers](#)

Home > Maps > Layers > Layer 875



**Robinson's atlas of Kings County, New York : compiled from Depicts : 1890 Add/Edit Year**  
**31 maps (29 maps rectified 94%)**  
[Visible](#) [Toggle Visibility](#) | [Merge](#) | [Download KML](#)  
[Share](#) | [Facebook](#) | [Twitter](#) | [Export](#)

Show [Digitize](#) [Export](#) [Metadata](#) [Comments \(0\)](#)



LIBRARY OF CONGRESS [ASK A LIBRARIAN](#) [DIGITAL COLLECTIONS](#) [LIBRARY CATALOGS](#) Search  [GO](#)

The Library of Congress > [Chroncling America](#) > [The sun.](#) > [April 09, 1894](#) > [Image 1](#)



CHRONCLING AMERICA  
Historic American Newspapers

Search America's historic newspaper pages from 1836-1922 or use the U.S. Newspaper Directory to find information about American newspapers published between 1690-present. [Chroncling America](#) is sponsored jointly by the National Endowment for the Humanities and the Library of Congress. [Learn more >](#)

[Search Pages](#) [Advanced Search](#) [All Digitized Newspapers 1836-1922](#) [US Newspaper Directory, 1690-Present](#)

All states   [GO](#)

[Back to search results](#) [Previous](#) | 2 of 6 | [Next](#) [Print](#) [Subscribe](#) [Share/Save](#) [Give Feedback](#)

**The sun., April 09, 1894, Image 1**  
About The sun. (New York [N.Y.]) 1833-1916

Image provided by: The New York Public Library, Astor, Lenox and Tilden Foundation

Image: 1 of 8. Page [All Pages](#) [Issues](#) [All Issues](#) [Text](#) [PDF](#) [JP2 \(4.2 MB\)](#)

### APRIL 9, 1894.—COPYRIGHT, 1894, BY THE SUN PRINTING OFFICE

#### THE THIEVES

ALL UNCONSCIOUS  
HIS WIFE.

Arrived Chicago  
West Side Houghs,  
band, Try to Drug  
sally Rob the Place.

echanic who had re-  
ent in this city, came  
g with his wife Mary,  
ant-featured woman  
ust figure of a typical  
oy moved his house-  
into rooms on the  
ry tenement at 324

The tenement is  
stables and a partly  
that are the ren-  
gung toughs who give  
n a deal of trouble.  
New York, was un-  
anned into the ten-

#### CONY ISLAND'S BIG BLAZE

Seven Wooden Buildings in "The Bowery"  
Illuminate the Jersey Shore.

In the middle of Saturday night the darkness of Coney Island was suddenly dispelled by a bright flame. There was a fire in "the Bowery." The place was dark and deserted; the saloons were closed, the concert halls were silent, the merry-go-rounds stood still, and the Bowery was as quiet as the grave. The flames shot upward from the roof of Perry's glass pavilion. Perry's glass pavilion stood at the crossing of the Bowery and Thompson's walk. Perry's glass pavilion, where Maggie Moran, the nightingale of Flatlands; Jim Burden, the old-time song and dance artist; Milly McCormick, the brilliant and vivacious soprano, whose voices used to make the glass pavilion tremble, have so often done their turns. Perry's glass pavilion was in flames. The glass was cracking, the pavilion was burning, and Perry twenty miles away.

A policeman saw the flames, and soon Coney Island was awake. Bells were ringing, horses were galloping, men were shouting, and everybody was active and alert. But the wild wind was with the flames, and before the first engine arrived the fire had crossed to the other side of the Bowery and Tim Omy's saloon was ablaze. In a little while other buildings were burning, and, as the material was all wood and the wind was brisk, the flames leaped

#### HID

BUT A NEW YORK POL  
TECTED CONKLIN'S

After Tramping at Night All  
Mamaroneck, an Escaped F  
neled Hands Betray Him  
a Ticket at an Elevated H

A medium-sized young man  
were soaking wet and covered  
dirt, climbed slowly up the  
street station of the Third  
road at about 2 o'clock yest  
When he arrived in front of  
the window he made several ineff  
got his hand into the change  
coat. His movements were h  
ever, as his wrists seemed to be  
by a handkerchief. The tick  
him what was the matter, but  
no reply. Then walking up to  
per he said:  
"I beg your pardon, sir,  
kindly get a nickel out of my  
I have injured my wrists an  
them bound together with th

NYGeoCon 2013

matknutzen@nypl.org / @matknutzen

11/13/2013

# New ways of meeting new user expectations...

## Creating digital hooks for text

A New York Public Library website [Explore others!](#)

### NYPL Map Warper

[Home](#) [Browse All Maps](#) [Browse Rectified Maps](#) [Browse All Layers](#)

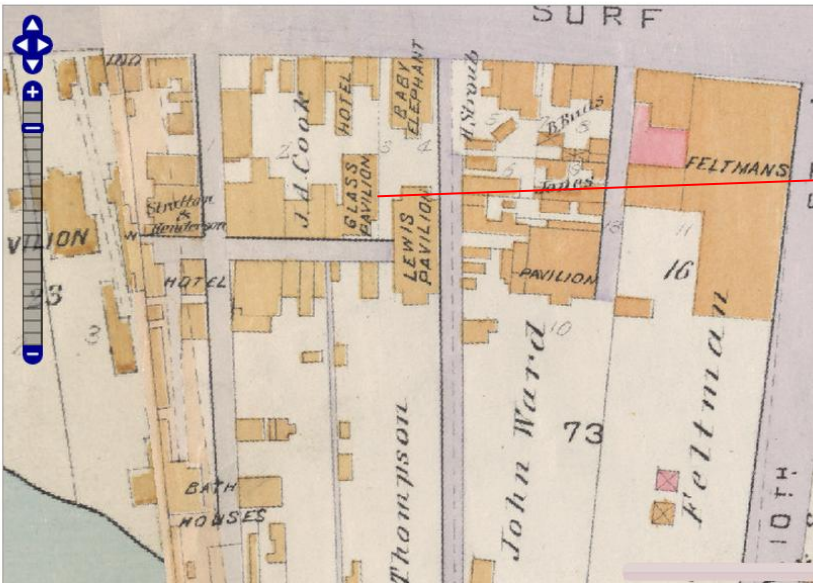
Home > Maps > Layers > Layer 875



### Robinson's atlas of Kings County, New York : compiled for

Depicts : 1890 [Add/Edit Year](#)  
**31 maps (29 maps rectified 94%)**  
[\(Visible\) Toggle Visibility](#) | [Merge](#) | [Download KML](#)  
[Share](#) | [f](#) | [my](#) | [t](#) | [Export](#)

Show [Digitize](#) [Export](#) [Metadata](#) [Comments \(0\)](#)



LIBRARY OF CONGRESS ASK A LIBRARIAN DIGITAL COLLECTIONS LIBRARY CATALOGS Search Search Loc.gov GO

The Library of Congress > [Chronicling America](#) > [The evening world.](#) > [April 22, 1908.](#) [Final Results Edition](#) > [Page 5, Image 5](#)

NATIONAL ENDOWMENT FOR THE HUMANITIES CHRONICLING AMERICA Historic American Newspapers

Search America's historic newspaper pages from 1836-1922 or use the U.S. Newspaper Directory to find information about American newspapers published between 1690-present. Chronicling America is sponsored jointly by the National Endowment for the Humanities and the Library of Congress. [Learn more >](#)

[Search Pages](#) [Advanced Search](#) [All Digitized Newspapers 1836-1922](#) [US Newspaper Directory, 1690-Present](#)

All states + from 1836 to 1922 +  GO

[Back to search results](#) 1 of 15 | [Next >](#) [Print](#) [Subscribe](#) [Share/Save](#) [Give Feedback](#)

### The evening world., April 22, 1908, Final Results Edition, Page 5, Image 5

About [The evening world.](#) (New York, N.Y.) 1887-1931

Image provided by: The New York Public Library, Astor, Lenox and Tilden Foundation

Image: 5 of 16. Page All Pages Issues All Issues Text PDF JP2 (4.0 MB)

### Made "Reasonable Rate."

Northbrooke early this year started operations, and issued policies at a 3 and 4 per cent. rate, whereas the exchange fixed rate is from 5 per cent. upward in the crowded sections of **Coney Island**.

Moving picture showmen bought Northbrooke's policies first, and they advertised his low rate to every one owning a shack on the Island. Bowery saloon-keepers insured ramshackle, one-story buildings, with about \$200 worth of furnishings, for \$300, at a 3 per cent. rate. Chop suey parlors, the red-hot men, and their sausage counters got into line and the dollars rolled into Northbrooke's hands.

Even Old Sol Perry, famous from ocean to ocean as owner of Perry's **Glass Pavilion**, on Stratton's Walk, fell for the livery, fell for the snave Mr. Northbrooke.

In the last two weeks Manager and General Agent Cliff has been deluged with letters and personal callers at his office, No. 64 Maiden Lane, regarding Northbrooke. Several people brought their policies along and said Northbrooke had issued them and accepted the premiums.

"Marcus J. Northbrooke never was in any capacity connected with the Metropolitan Fire Insurance Company, of Chicago," said Mr. Cliff, to an Evening World reporter. "He is not a member of the New York Fire Insurance Exchange, and has no license or a certification as a broker. I cannot say now to what extent his operations reached, but I understand that in one week, April 6 to 13, he issued policies amounting to \$200,000. I would say that \$2,000,000 would fully cover all the business he did."

"Scotty" Morgan, owner of Dexter's Hotel on the Bowery, was introduced to Northbrooke by Langtry.

"I understand that the fire insurance trust has refused to sell you a policy at a fair rate?" said Northbrooke to Morgan.

"Well, my son, you are here to pick

NYGeoCon 2013

matknutzen@nypl.org / @matknutzen

11/13/2013



# New ways of meeting new user expectations...

## Creating digital hooks for text

A New York Public Library website [Explore others!](#)

### NYPL Map Warper

[Home](#) [Browse All Maps](#) [Browse Rectified Maps](#) [Browse All Layers](#)

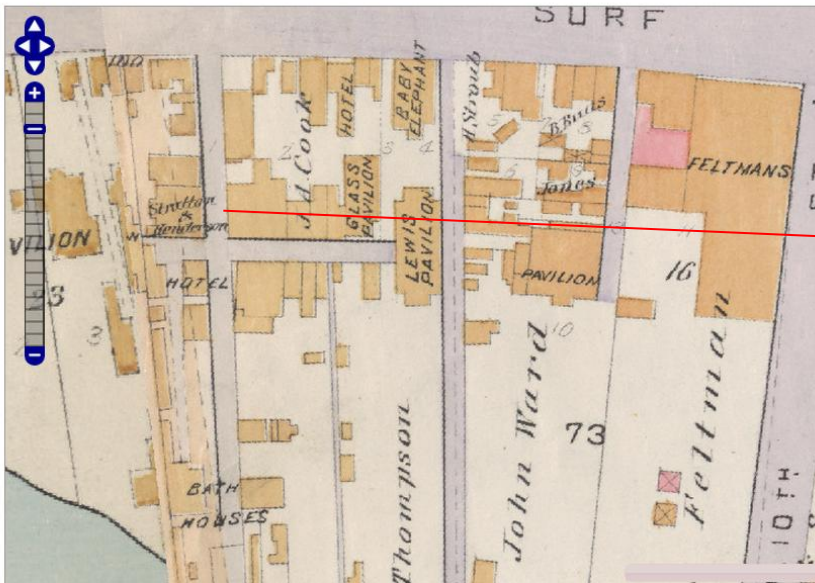
Home > Maps > Layers > Layer 875



### Robinson's atlas of Kings County, New York : compiled from

Depicts : 1890 [Add/Edit Year](#)  
**31 maps (29 maps rectified 94%)**  
[Visible](#) [Toggle Visibility](#) | [Merge](#) | [Download KML](#)  
[Share](#) | [Facebook](#) | [Twitter](#) | [Export](#)

Show [Digitize](#) [Export](#) [Metadata](#) [Comments \(0\)](#)



LIBRARY OF CONGRESS [ASK A LIBRARIAN](#) [DIGITAL COLLECTIONS](#) [LIBRARY CATALOGS](#) Search  [GO](#)

The Library of Congress > [Chroncling America](#) > [The sun.](#) > [July 15, 1892](#) > [Image 1](#)

**CHRONCLING AMERICA**  
Historic American Newspapers

Search America's historic newspaper pages from 1836-1922 or use the U.S. Newspaper Directory to find information about American newspapers published between 1690-present. Chroncling America is sponsored jointly by the National Endowment for the Humanities and the Library of Congress. [Learn more](#)

[Search Pages](#) [Advanced Search](#) [All Digitized Newspapers 1836-1922](#) [US Newspaper Directory, 1690-Present](#)

All states  from 1836 to 1922   [GO](#)

[Back to search results](#) [Previous](#) | 3 of 4 | [Next](#) [Print](#) [Subscribe](#) [Share/Save](#) [Give Feedback](#)

**The sun., July 15, 1892, Image 1**  
About The sun. (New York [N.Y.]) 1833-1916

Image provided by: The New York Public Library, Astor, Lenox and Tilden Foundation

Image: 1 of 10. Page All Pages Issues All Issues Text PDF JP2 (4.1 MB)

she had him arrested for stealing a ring. It was a gift of his, and needing money, he had borrowed and pawned it. He was 21 years old, good looking, and a nice dresser. It was supposed that the arrest preyed on his mind.

**Stricken with Apoplexy in the Surf.**

Abraham H. Carrick, city buyer for Charles Broadway Rouss, who lived at 131 Wayne street, Jersey City, visited Coney Island with his wife yesterday. They went in bathing from **Stratton & Henderson's** pavilion at West Brighton about 5 o'clock. They had been in the water but a few minutes when Carrick fell in an apoplectic fit. He was dragged out of the water, but died in a few minutes. Mrs. Carrick took the body to Jersey City last night.

NYGeoCon 2013

matknutzen@nypl.org / @matknutzen

11/13/2013

Credit where due:

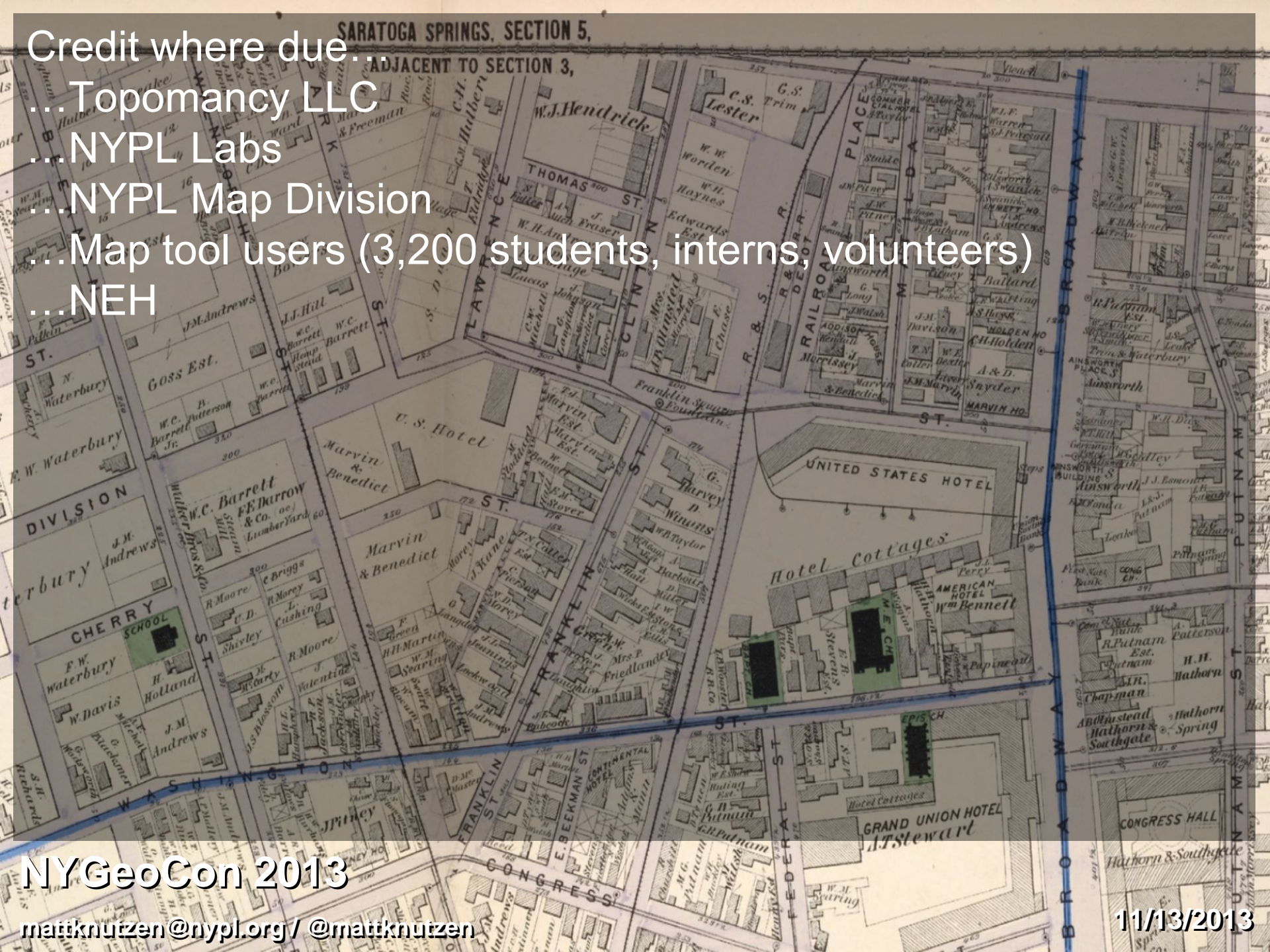
... Topomancy LLC

... NYPL Labs

... NYPL Map Division

... Map tool users (3,200 students, interns, volunteers)

... NEH



NYGeoCon 2013

matknutzen@nypl.org / @matknutzen

11/13/2013

Questions?  
Comments?  
Thoughts?  
Ideas?

SARATOGA SPRINGS, SECTION 5,

ADJACENT TO SECTION 3,

